

NOBLELIFT

www.noblelift.cn

NB460

Hand-pushed walk-behind scrubber



NOBLELIFT INTELLIGENT EQUIPMENT CO., LTD

Product Introduction:

NB460 is a newly designed compact hand-pushed floor scrubber with a 460mm floor washing width and a 30L sewage tank/freshwater tank capacity. The whole machine is designed to be equipped with a 24V100Ah lead-acid or high-performance lithium battery.

- The lightweight body and 460mm floor washing width make it suitable for cleaning offices and commercial places of about 500 square meters.
- Waterproof touch panel, stable and reliable. RFC card controls the power on/off. One-touch ECO function for ultra-quiet energy saving, suitable for sound-sensitive environments.
- The handle button switch controls the start of the brush plate. In crowded conditions, the brush plate can be started and stopped at any time to avoid damage to the ground.
- The 680mm wide aluminum die-cast water scraper can easily clean along the edges and operate in narrow passages. The standard PU rubber strip is acid and oil resistant and has low noise.
- The sewage tank has a large opening and can be flipped over and disassembled without tools, making it easy to clean and maintain.
- The water wiper angle adjustment mechanism can ensure the water wiping effect of the water wiper.
- The brush plate has an adjustable balance structure to cope with different ground surfaces.
- The large-capacity battery compartment can accommodate two 12V100Ah batteries, with a usage time of more than 5-6 hours.
- Adjusting the angle of the machine can realize the separate water absorption function.
- Brushless water suction motor, 150W and 220W power options, high efficiency and energy saving.
- The 30L clean water tank and sewage tank can meet the needs of most scenarios.
- Optional cleaning basket.



Long working hours



High reliability



High efficiency



Low security risk

**Save Labor and money,
for users to save a lot of
labor costs.**



NOBLELIFT CHINA

Address: 528 Changzhou Road, Taihu Sub-district,
Changxing, Zhejiang 313100 China
Tel: 86-572-6210817 6210311
Fax: 86-572-6210777 6128612
Email: info@noblelift.com
Http: www.noblelift.com www.noblelift.cn



Official website



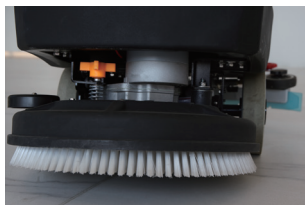
Our Wechat



Waterproof touch panel, stable and reliable. RFC card controls the power on/off. One-touch ECO function for ultra-quiet energy saving, suitable for sound-sensitive environments.



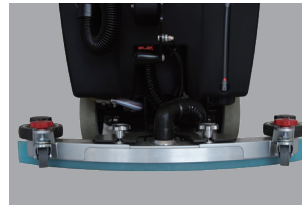
The water wiper angle adjustment mechanism can ensure the water wiping effect of the water wiper.



The brush plate has an adjustable balance structure to cope with different ground surfaces.



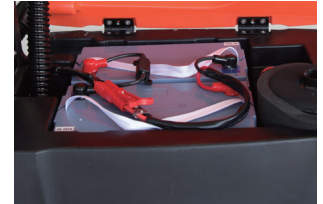
The handle button switch controls the start of the brush plate. In crowded conditions, the brush plate can be started and stopped at any time to avoid damage to the ground.



The 680mm wide aluminum die-cast water scraper can easily clean along the edges and operate in narrow passages. The standard PU rubber strip is acid and oil resistant and has low noise.



The sewage tank has a large opening and can be flipped over and disassembled without tools, making it easy to clean and maintain.



The large-capacity battery compartment can accommodate two 12V100Ah batteries, with a usage time of more than 6 hours.



Optional cleaning basket.



The recommended application of brush/ needle disc for fixing pad:

	Brush			Needle disc+pad		
	Soft brush	Nylon (Standard)	Hard brush	White	Red	Black
Concrete floor		Applicable	Applicable		Applicable	Applicable
Terrazzo floor		Applicable	Applicable		Applicable	Applicable
Tile/ Slate floor	Applicable	Applicable			Applicable	
Marble floor	Applicable	Applicable		Applicable	Applicable	
Plastic floor	Applicable			Applicable	Applicable	
Rubber floor	Applicable			Applicable		

Notes:

1. Soft brush: for cleaning and polishing smooth surface
2. Nylon brush: for general floor cleaning (standard configuration)
3. Hard brush: for removing stubborn dirt on hard ground
4. Needle disc: holding the pad, reducing the wear on the floor; the pad is used together with the needle disc. According to different conditions of the floor, we need to choose different pads in different colors (generally the deeper the color is, the greater the friction on the floor).

Specific application of pads:

- a) White pad: for general cleaning and polishing, marble and smooth floors
- b) Red pad: for general floor cleaning
- c) Black pad: for removing stubborn stains on hard floors

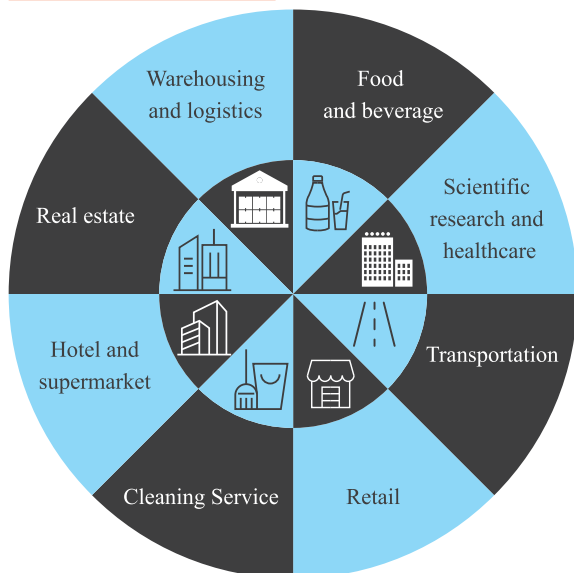
The application of squeezer rubber strip:

	Rubber (Standard)	(PU)
Concrete floor	Applicable	Applicable
Terrazzo floor	Applicable	Applicable
Tile/ Slate floor	Applicable	
Marble floor	Applicable	
Plastic floor	Applicable	Applicable
Rubber floor	Applicable	Applicable

Note:

Polyurethane (PU) strip has strong wear resistance and oil resistance, which is suitable for oil floor conditions, but cutting and tearing performance of PU strip is poor, so it is not suitable for quadrel/ brick or tile floors.

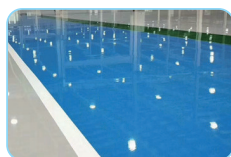
Industries



Scenarios



Epoxy Flooring



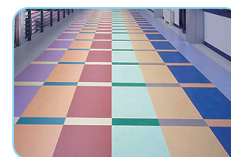
Wear-Resisting Flooring



Tile Flooring



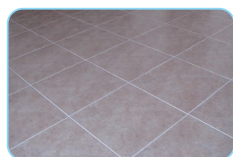
Marble Flooring



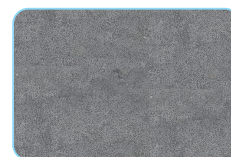
PVC



Terrazzo Flooring



Small Square Brick Flooring



Lime Flooring

NB460 Hand-pushed walk-behind scrubber

Manufacturer`s type designation			NB460
TECHNICAL DATA	Drive		Battery
	Operator type		Hand push
	Net weight (Without battery)	kg	54
	Wheel diameter	Ø x w (mm)	(Ø200×48)*2
	Brush/ Pad diameter	Ø x w (mm)	460
	Vehicle length	L(mm)	990
	Overall width	W(mm)	450
	Squeegee width	W1(mm)	680
	Overall height	H(mm)	1050
	Solution tank capacity	L	25
	Recovery tank capacity	L	25
	Cleaning path	mm	460
	Brush speed	Rpm	180
	Brush pressure	kg	10
	Continuous working time	h	5~6
	Sound pressure level	dB	65±3
	Max. gradeability	%	2
	Brush motor rated power	W	450
	Vacuum Motor Power	W	220/150(ECO)
	Vacuum capacity	kPa	>10.5/>9(ECO)
	Battery voltage, nominal capacity	V/Ah	24/100
	Battery weight (+/-5%)	kg	33*2
	Battery size (L x W x H)	mm	365x350x220