

Product Introduction:

The ND530 is a highly efficient, professional, self-propelled, push-and-go floor scrubber. It features an extra-wide 530mm scrubber disc and a large-capacity dual 50L water tank. Available with either a 24V100Ah lead-acid battery or a 25.6V100Ah high-performance lithium-ion battery, it delivers powerful cleaning performance with long-lasting battery life.

- The sewage tank has a large opening and a detachable design, making it easy to clean and maintain.
- Touch operation panel, simple and reliable operation, low maintenance cost.
- The large water inlet at the front makes adding water quick and easy.
- The brush plate cover and water scraper frame are made of all-aluminum die-casting and spray-painted, which are strong, durable and rust-proof.
- The brush plate's adjustable pressure on the ground can easily cope with different cleaning requirements, and is efficient and reliable.
- High-efficiency mechanical noise reduction system can effectively reduce equipment noise during operation.
- The efficient and reliable mechanical defoaming and sewage tank full water alarm mechanism greatly prolongs the service life of the suction motor.
- The whole motor adopts one-button soft start design, and the controller integrates digital over-current and under-voltage protection functions.



Long working hours



High reliability



High efficiency



Low security risk

**Save Labor and money,
for users to save a lot of
labor costs.**



NOBLELIFT

www.noblelift.cn

ND530

Hand-pushed walk-behind floor scrubber



NOBLELIFT CHINA

Address:528 Changzhou Road, Taihu Sub-district,
Changxing, Zhejiang 313100 China
Tel:86-572-6210817 6210311
Fax:86-572-6210777 6128612
Email: info@noblelift.com
Http: www.noblelift.com www.noblelift.cn



Official website

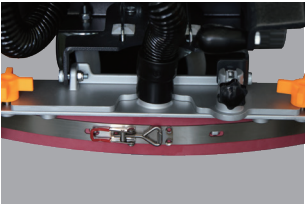


Our Wechat

NOBLELIFT INTELLIGENT EQUIPMENT CO., LTD



Touch operation panel, simple and reliable operation, low maintenance cost.



The brush plate cover and water scraper frame are made of all-aluminum die-casting and spray-painted, which are strong, durable and rust-proof.



External charging port for easy charging.



The large water inlet at the front makes adding water quick and easy.



The sewage tank has a large opening and a detachable design, making it easy to clean and maintain.



The entire machine is equipped with a Hengye customized long-life drive motor, eliminating the need for manual pushing and making operation easier.



The efficient and reliable mechanical defoaming and sewage tank full water alarm mechanism greatly prolongs the service life of the suction motor.



The patented brush plate bayonet design enables automatic loading and unloading of the brush plate, and the bayonet has a longer service life.

The recommended application of brush/ needle disc for fixing pad:

	Brush			Needle disc+pad		
	Soft brush	Nylon (Standard)	Hard brush	White	Red	Black
Concrete floor		Applicable	Applicable		Applicable	Applicable
Terrazzo floor		Applicable	Applicable		Applicable	Applicable
Tile/ Slate floor	Applicable	Applicable			Applicable	
Marble floor	Applicable	Applicable		Applicable	Applicable	
Plastic floor	Applicable			Applicable	Applicable	
Rubber floor	Applicable			Applicable		

Notes:

1. Soft brush: for cleaning and polishing smooth surface
2. Nylon brush: for general floor cleaning (standard configuration)
3. Hard brush: for removing stubborn dirt on hard ground
4. Needle disc: holding the pad, reducing the wear on the floor; the pad is used together with the needle disc. According to different conditions of the floor, we need to choose different pads in different colors (generally the deeper the color is, the greater the friction on the floor).

Specific application of pads:

- a) White pad: for general cleaning and polishing, marble and smooth floors
- b) Red pad: for general floor cleaning
- c) Black pad: for removing stubborn stains on hard floors

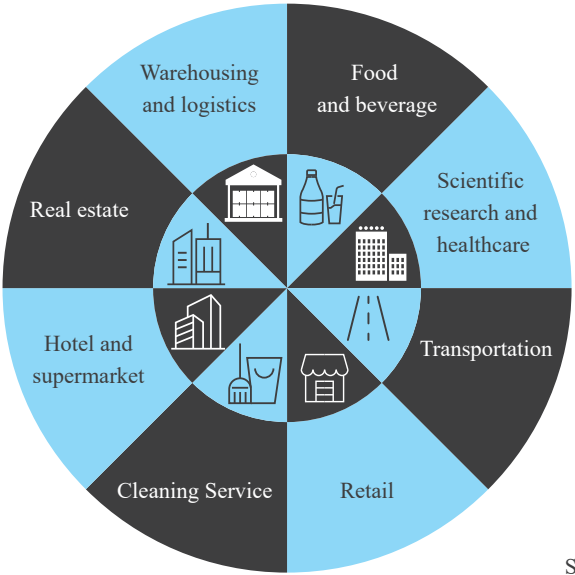
The application of squeezer rubber strip:

	Rubber (Standard)	(PU)
Concrete floor	Applicable	Applicable
Terrazzo floor	Applicable	Applicable
Tile/ Slate floor	Applicable	
Marble floor	Applicable	
Plastic floor	Applicable	Applicable
Rubber floor	Applicable	Applicable

Note:

Polyurethane (PU) strip has strong wear resistance and oil resistance, which is suitable for oil floor conditions, but cutting and tearing performance of PU strip is poor, so it is not suitable for quadrel/ brick or tile floors.

Industries



Scenarios



Epoxy Flooring



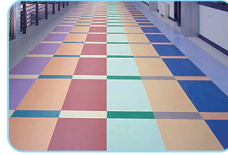
Wear-Resisting Flooring



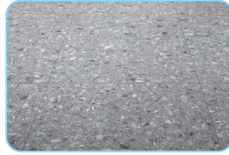
Tile Flooring



Marble Flooring



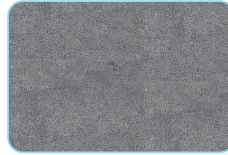
PVC



Terrazzo Flooring



Small Square Brick Flooring



Lime Flooring

ND530 Hand-pushed walk-behind floor scrubber

Manufacturer`s type designation			ND530
TECHNICAL DATA	Drive		Battery
	Operator type		Hand pushed self-propelled
	Service weight (Without battery)	kg	100
	Wheel diameter	Øxw(mm)	(Ø200×38)*2
	Brush/ Pad diameter	Øxw(mm)	530
	Vehicle length	L(mm)	1250
	Vehicle width	W(mm)	550
	Squeegee width	W1(mm)	840
	Vehicle height	H(mm)	1050
	Solution tank capacity	L	50
	Recovery tank capacity	L	50
	Cleaning path	mm	530
	Brush speed	Rpm	180
	Max. gradeability	%	2
	Brush pressure (without pressure device)	kg	20.5
	Brush pressure (with pressure device)	kg	27.8
	Drive motor rated power	W	550
	Vacuum motor rated power	W	400
	Vacuum capacity	kPa	>11
	Sound pressure level	dB	65.8±3
	Battery voltage	V/Ah	24/100
	Battery size (L x W x H) (mm)	mm	350x350x300