

# EPT 15Q/20Q

## Entry level Electric Pallet Truck

### ADVANTAGES:

- The vehicle selects the mature core components with low failure rate and high reliability.
- Multi-function handle with turtle speed switch, buzzer, walking upright, emergency reverse, power display, fault code and one key lift function.
- The high power and big diameter drive wheel has strong driving force and strong ability to pass obstacles.
- Reinforced Fork, ring bar and steel upper cover, drive wheel cover, make sure the high strength and safety.
- The oil cylinder and frame adopt the joint bearing connection, so the traveling stability is good.
- The electrical system is greatly optimized for lower energy consumption and higher safety
- The vehicle chooses the large capacity maintenance-free lead-acid battery, the work time is long.
- Battery, load wheel, stability casters, backrest and other specifications for choice, to suit your needs best with cost effective.



## Ergonomic smart tiller

EPT15Q/20Q Standard configuration

Turtle Speed Button  
Vertical Drive Function  
LEDs for Battery Charge Level  
Fault Code Indication  
Removable Key Switch for access control



BACK



FRONT

Emergency-reverse & Horn Buttons

Electric Lifting and Lowering

## Climbing performance & Body strength



Loading capacity: **1500/2000**kg  
EPT15Q  
Vehicle speed: **4/4.5**km/h (laden / unladen)  
Climbing grade: **6%/16%** (laden / unladen)

EPT20Q  
Vehicle speed: **4.7/4.8**km/h (laden / unladen)  
Climbing grade: **6%/16%** (laden / unladen)

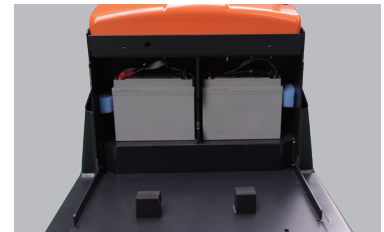
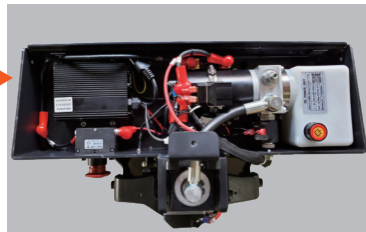


Reinforced Fork and non-deformable.



The rock-arm is made of high strength material with long service life and durability.

## Easy to maintain



The steel upper cover is fixed by a screw rod, and the assembly and disassembly are convenient; Open the top cover to see the pump station, charger, fuse and buzzer, it's easy to troubleshoot and repair.

Front flip cover design, easy to replace the battery.



External programming port for convenient parameter adjustment and fault diagnosis.



Large diameter opening for built-in charger, it is more convenient to take and put the charging wire.



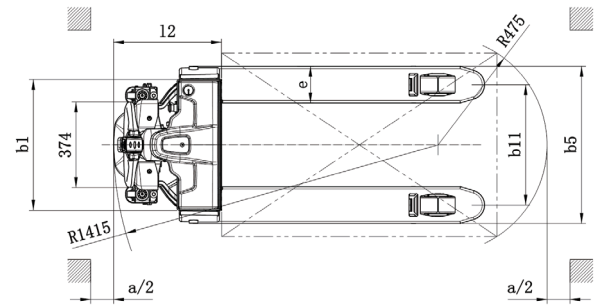
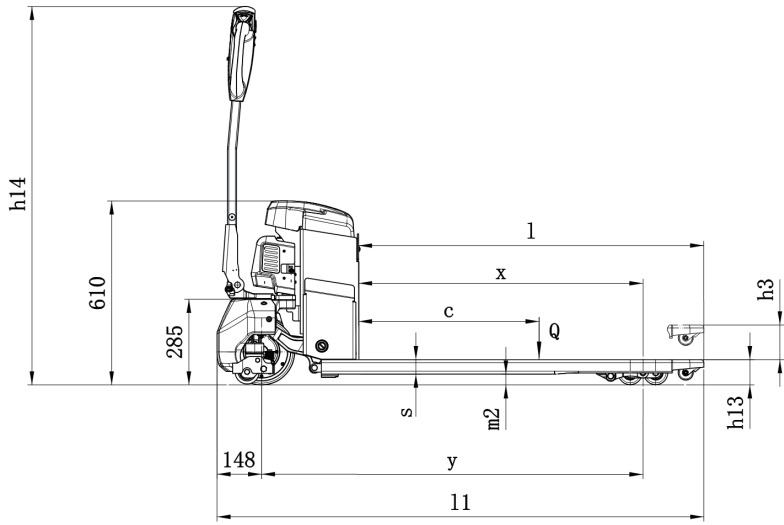
Three-color LED charging indicator, easy to observe the battery charging state.

## Remarkable stability



The oil cylinder and frame adopt the joint bearing connection, so the traveling stability is ensured.

The lifting height of the fork is limited electrically to improve the working safety of the vehicle



**Type sheet for industrial truck acc. to VDI 2198 1KG=2.2LB 1INCH=25.4MM**

Distinguishing mark						
1.2	Manufacturer's type designation		EPT15Q		EPT20Q	
1.3	Drive		Electric		Electric	
1.4	Operator type		Order pickers		Order pickers	
1.5	Load Capacity / rated load	Q (t)	1.5		2.0	
1.6	Load centre distance	c (mm)	600		600	
1.8	Load distance, centre of drive axle to fork	x (mm)	878 <sup>1)</sup>		878 <sup>1)</sup>	
1.9	Wheelbase	y (mm)	1203 <sup>1)</sup>		1203 <sup>1)</sup>	
Weight						
2.1	Service weight	kg	135	141	140	146
2.2	Axle loading, laden front/rear	kg	606/1060	610/1062	637/1537	647/1539
2.3	Axle loading, unladen front/rear	kg	128/38	132/40	133/41	137/43
Tyres, chassis						
3.1	Tires		PU		PU	
3.2	Tire size, front	Øxw (mm)	Ø 210×75		Ø 210×75	
3.3	Tire size, rear	Øxw (mm)	Ø 80×70/80×93		Ø 80×70/80×93	
3.4	Additional wheels(dimensions)	Øxw (mm)	-/Ø 80×30		-/Ø 80×30	
3.5	Wheels,number front/rear(x=driven wheels)		1x/ 2(1x/ 4) or 1x +2/ 2(1x +2/ 4)		1x/ 2(1x/ 4) or 1x +2/ 2(1x +2/ 4)	
3.6	Tread, front	b10 (mm)	430		430	
3.7	Tread, rear	b11 (mm)	380	525	380	525
Dimensions						
4.4	Lift	h3 (mm)	115		115	
4.9	Height of tiller in drive position min./ max.	h14 (mm)	700/1160		700/1160	
4.15	Height, lowered	h13 (mm)	80		80	
4.19	Overall length	l1 (mm)	1618		1618	
4.20	Length to face of forks	l2 (mm)	470		470	
4.21	Overall width	b1 (mm)	570		570	
4.22	Fork dimensions	s/e/l (mm)	48/160/1150		48/160/1150	
4.25	Width Across Forks	b5 (mm)	540	685	540	685
4.32	Ground clearance, centre of wheelbase	m2 (mm)	32		32	
4.34	Aisle width for pallets800X1200 lengthways (200mm safe distance)	Ast (mm)	2067 <sup>2)</sup>		2067 <sup>2)</sup>	
4.35	Turning radius	Wa (mm)	1353 <sup>2)</sup>		1353 <sup>2)</sup>	
Performance data						
5.1	Travel speed, laden/ unladen	km/h	4/4.5		4.7/4.8	
5.2	Lift speed, laden/ unladen	mm/s	24/35		16/22	
5.3	Lowering speed, laden/ unladen	mm/s	51/37		63/41	
5.8	Max. gradeability, laden/ unladen	%	6/16		6/16	
5.10	Service brake		regenerative		regenerative	
Electric- engine						
6.1	Drive motor rating S2 60min	kW	0.75		1.0	
6.2	Lift motor rating at S3 10%	kW	0.8		0.8	
6.3	Battery acc. to DIN 43531/ 35/ 36 A, B, C, no		No		No	
6.4	Battery voltage, nominal capacity K5	V / Ah	24/65 (24/85)		48/30	
6.5	Battery weight	kg	17×2 (26.8)		8.5×4	
6.6	Energy consumption acc. to VDI cycle	kWh/h	0.147		0.155	
Addition data						
8.1	Type of drive control		DC-speed control		DC-speed control	
8.4	Sound level at driver's ear acc. to EN 12053	dB(A)	<70		<70	
8.6	Steering		Electric steering		Electric steering	

1) With lowered fork x=943mm,y=1265mm;

2) With lowered fork Wa=1415mm,Ast=2091mm.