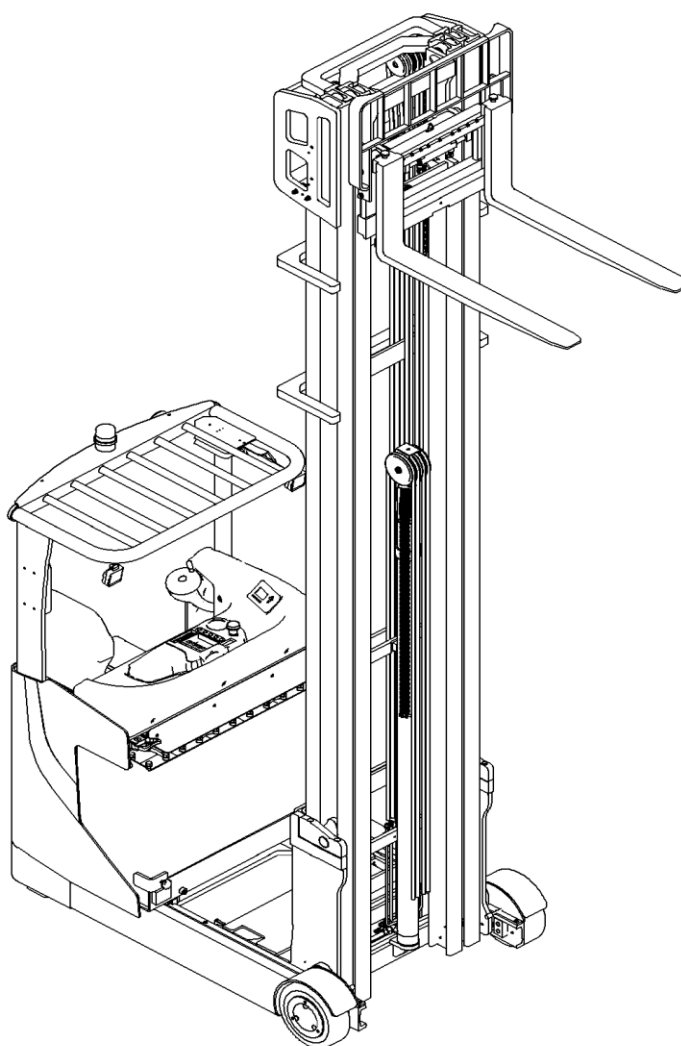


SPARE PARTS LIST

Reach truck RT16/14N



Version 12/2017

From truck identification number:

RT16/14N-BPT-001-EN

Catalogue

Fig. 1 Sticker (EU)	3
Fig. 2 Sticker (US)	2
Fig. 3 Outer appearance (three stage mast)	4
Fig. 4 Outer appearance (two stage mast).....	5
Fig. 5 Control panel.....	6
Fig. 6 Battery holder	8
Fig. 7 Load roller	11
Fig. 8 Platform.....	13
Fig. 9 Oil tank function group.....	15
Fig. 10 Cylinder function group.....	19
Fig. 11 Truck body.....	21
Fig. 12 Handle components.....	24
Fig. 13 Overhead guard components.....	26
Fig. 14 Truck body (hydraulic pipeline 3 ways)	28
Fig. 15 Truck body (hydraulic pipeline 4 ways)	32
Fig. 16 Electric steering unit	36
Fig. 17 Three stage mast (fork carriage components)	38
Fig. 18 Three stage mast (outer mast).....	41
Fig. 19 Three stage mast (middle mast).....	45
Fig. 20 Three stage mast (inner mast)	49
Fig. 21 Three stage mast (hydraulic pipeline three ways)	53
Fig. 22 Three stage mast (hydraulic pipeline four ways)	57
Fig. 23 Two stage mast (fork carriage components).....	61
Fig. 24 Two stage mast (mast components)	63
Fig. 25 Two stage mast (hydraulic pipeline three ways)	66
Fig. 26 Two stage mast (hydraulic pipeline four ways)	69
Fig. 27 Electric controller components.....	72
Fig. 28 Cables.....	74
Fig. 29 Tilt cylinder	76
Fig. 30 Cylinder (M) (three stage mast).....	78
Fig. 31Cylinder (three stage mast)	80
Fig. 32 Cylinder (two stage mast)	82
Fig. 33 Reach forward cylinder	84
Fig. 34 Driving/Lifting motor components.....	86
Easy worn parts list	88

Fig. 1 Sticker (EU)

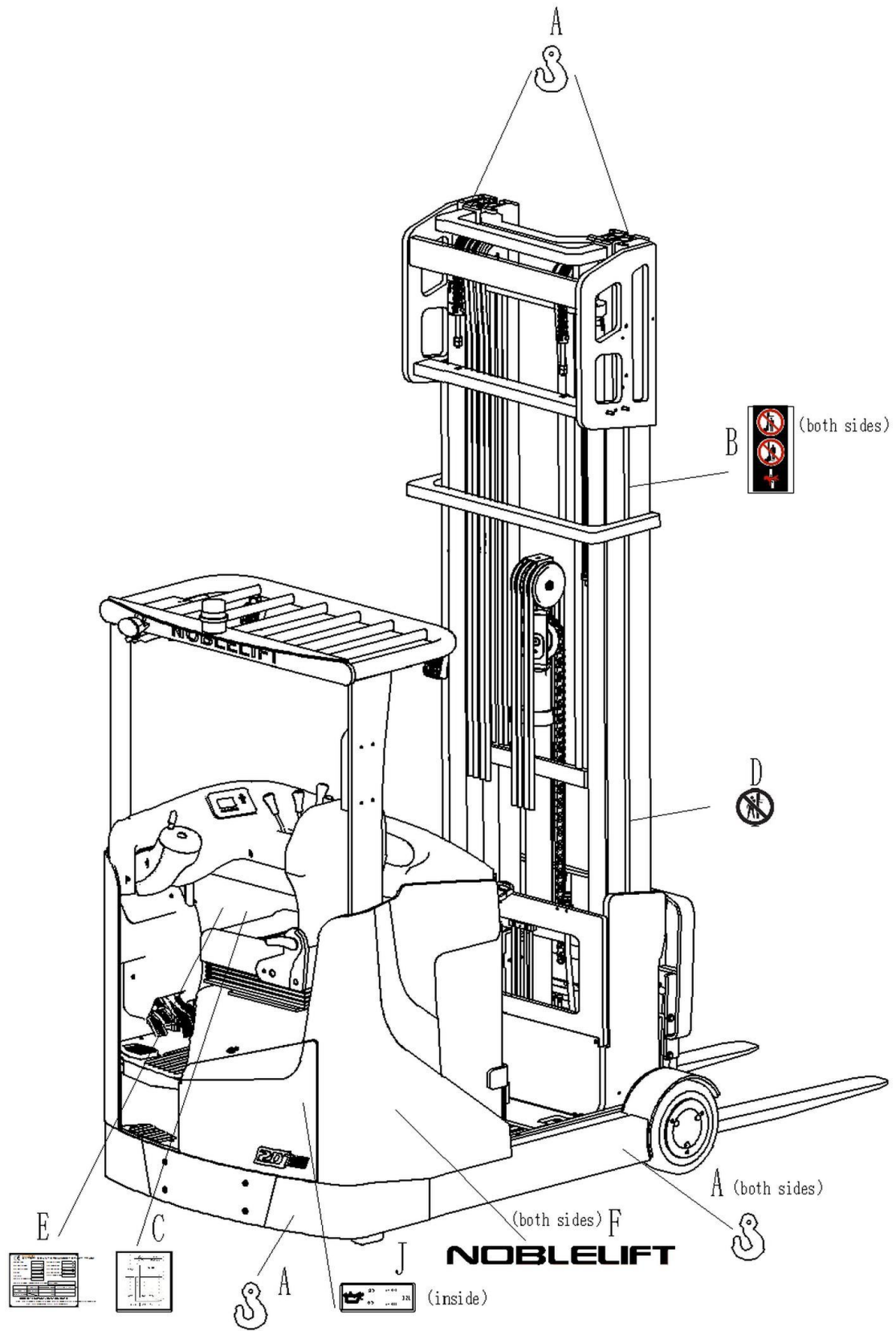


Fig. 1 Sicker (EU)

No.	Art No.	Description	Qty.	Note
A	941200300001	Hook sticker	6	
B	941200100004	Warning sticker	2	
C	941200300003	Filling sticker	1	
D	213047502000	Residual lift capacity sticker	1	
E	213047502001	Identification plate	1	
F	941200500003	Logo (NOBLELIFT)	2	

Fig. 2 Sticker (US)

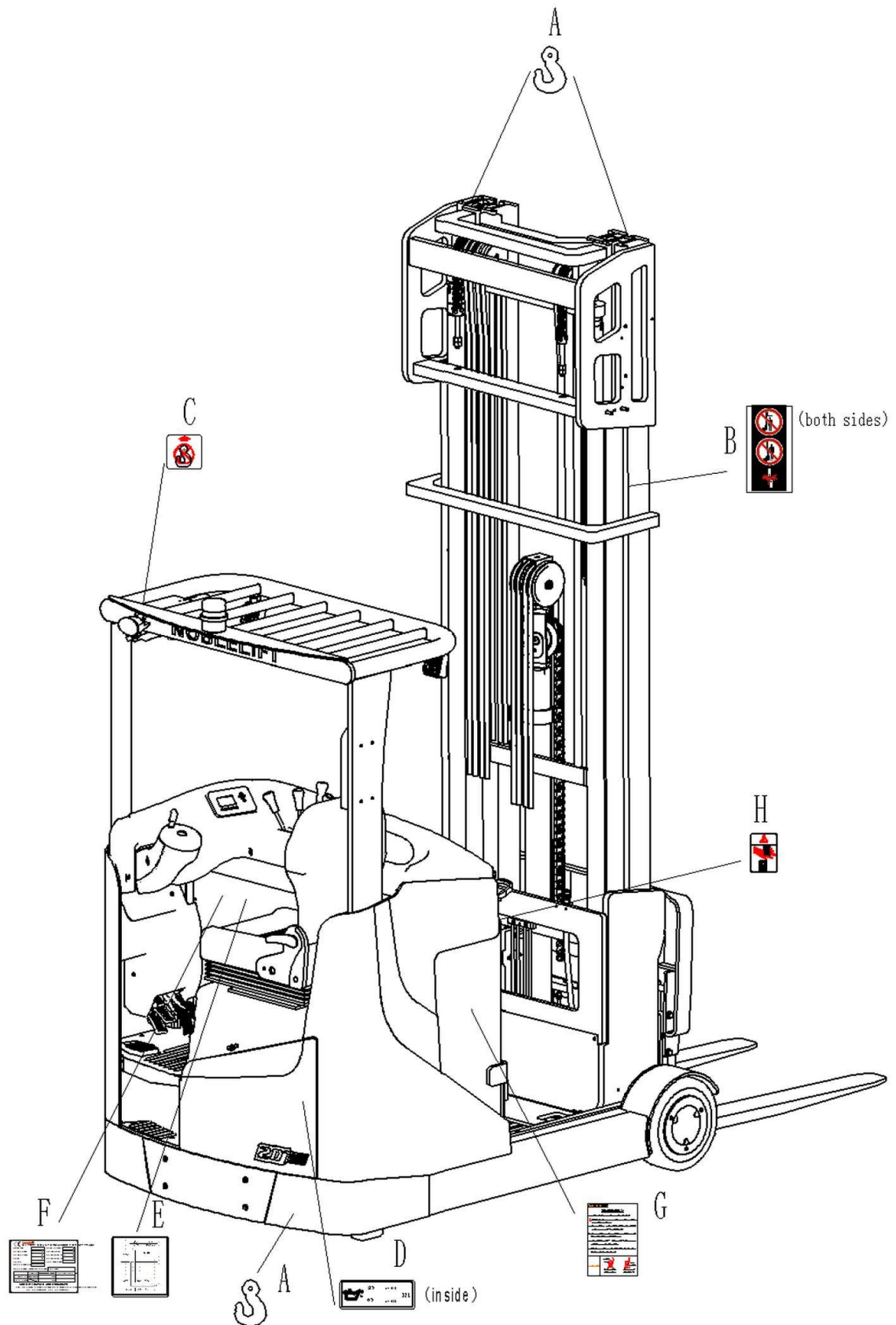


Fig. 2 Sticker (US)

	Art No.	Description	Qty.	Note
A	941200300001	Crane hook label	6	
B	941200100004	Warning label	2	
C	941200100025	Warning label	1	
D	941200300003	Filling sticker	1	
E	213047502000	Residual lift capacity sticker	1	
F	213047502001	Identification plate (ID-plate)	1	
H	941200100027	Warning label	1	

Fig. 3 Outer appearance (three stage mast)

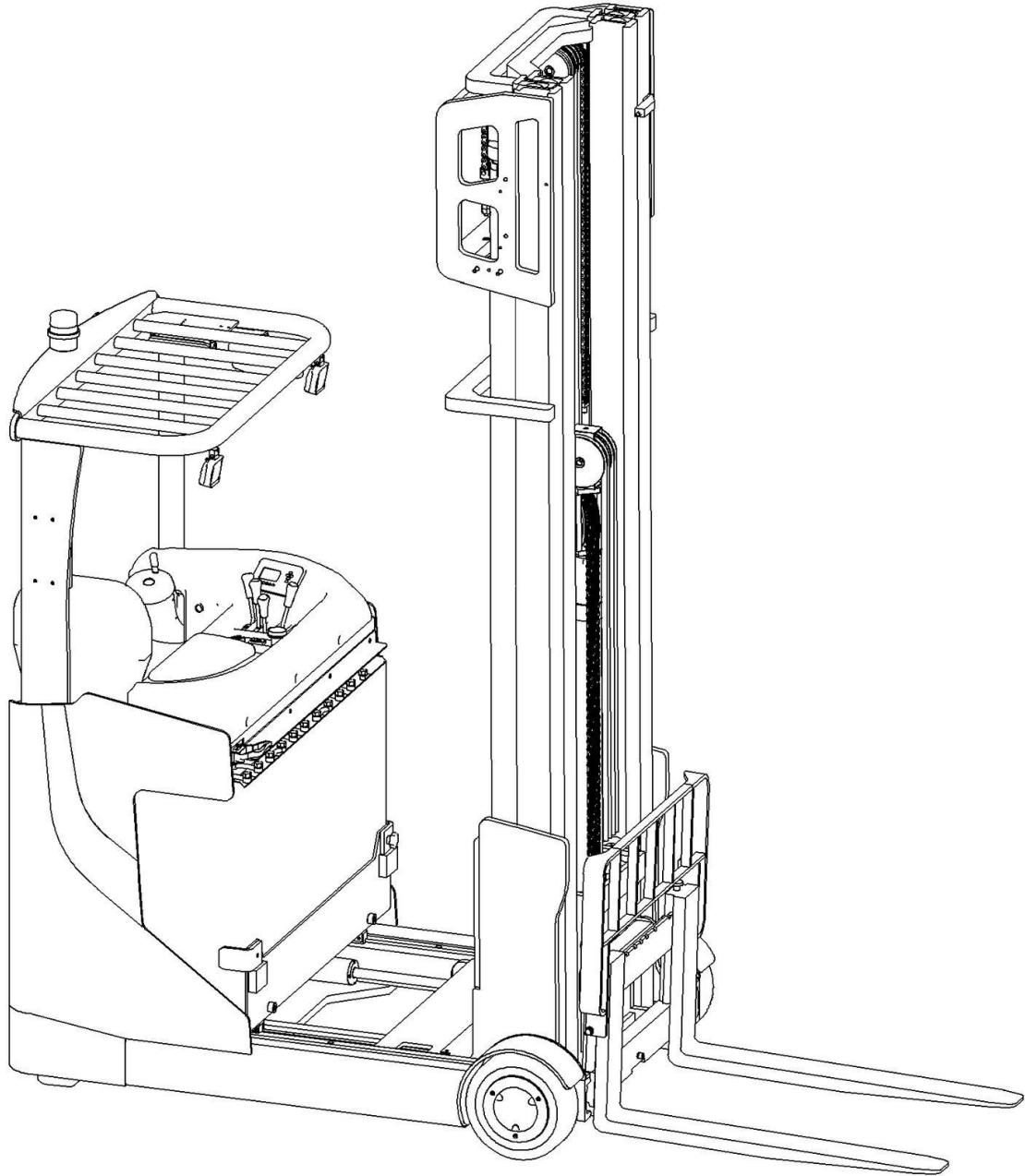


Fig. 4 Outer appearance (two stage mast)

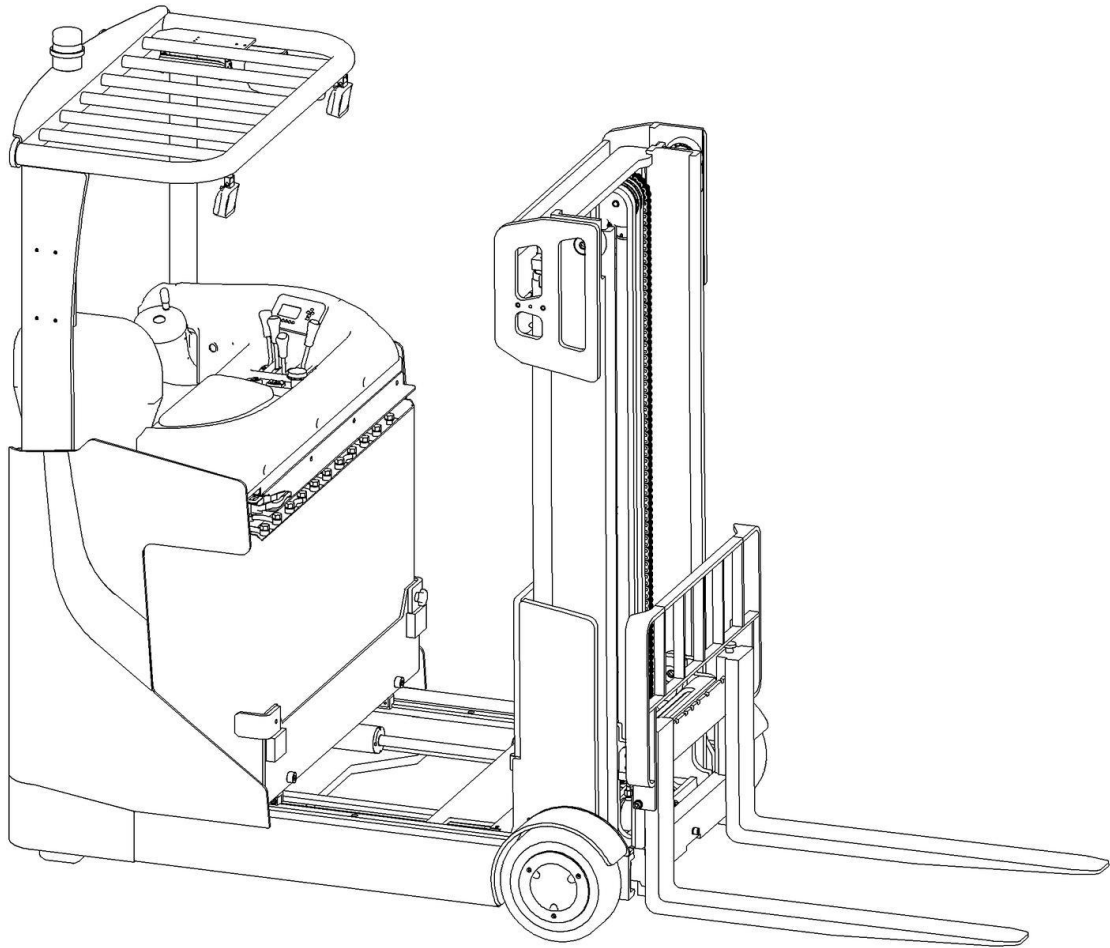


Fig. 5 Control panel

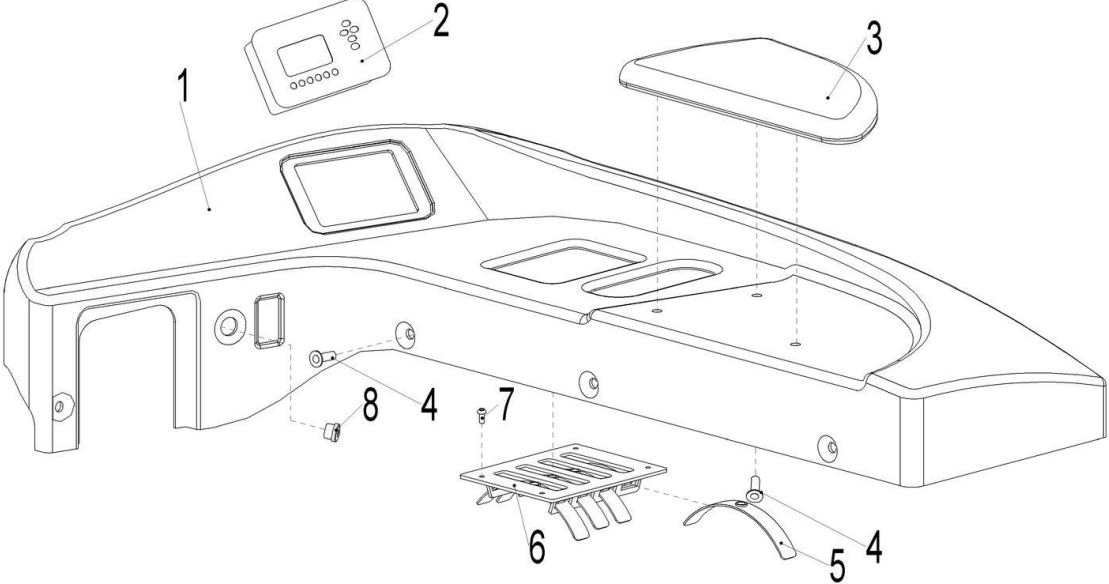


Fig. 5 Control panel

No.	Art No.	Description	Qty.	Note
1	213010020200	Protective cover	1	
2	921100100011	Instrument	1	3501-12-80V
3	213010020201	Arm rest	1	
4	941100100005	Screw	8	M10x15-8.8
5	213010020203	Sliding strip	4	
6	218025020013	Dust cover	1	
7	910200300013	Screw	4	M5x16-8.8
8	920200200002	Key switch	1	

Fig. 6 Battery holder

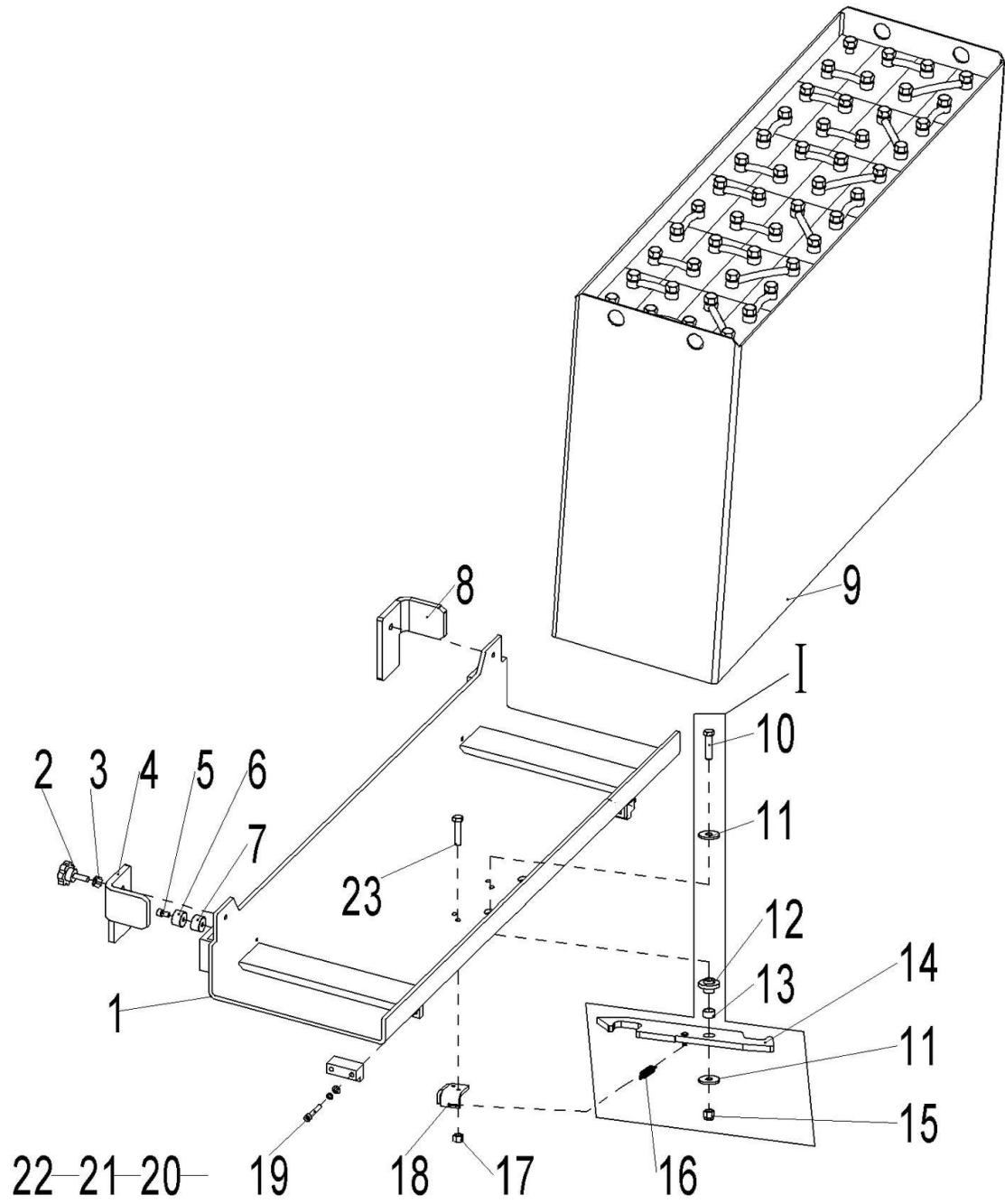


Fig. 6 Battery Holder

No.	Art No.	Description	Qty.	Note
1	212012510020	Battery frame welding	1	
2	911000300002	Bar	2	G7274. 4-M10x30
3	910300100007	Nut	2	GB6170-M10-10
4	213012520303	Limit block 1	1	
5	910200200055	Screw G70.1-M8x16-8.8	2	RT14N
	910200200059	Screw GB70.1-M8x30-8.8		RT16N
6	532621520062	Damping pad	2	30x9x18
7	212012520203	Sleeve 30x9x25	2	RT16N Three stage mast
	212012520200	Sleeve 30x9x20		RT16N Two stage mast
8	213012520304	限位块 2	1	
9	212037010000	Traction battery 48V-3PzS360	1	Welding type
	212037010001	Traction battery 48V-3PzS360		Bolt type
	212037010002	Traction battery 48V-3PzS420		Welding type
	212037010003	Traction battery 48V-3PzS420		Bolt type
	212037010004	Traction battery 48V-3PzS450		Welding type
	212037010005	Traction battery 48V-3PzS450		Bolt type
10	910100300055	Bolt	1	G5783-M12x55-8.8
11	213012520009	Washer	2	40x13x4
12	213012520008	Axle base	1	
13	940500100012	Bushing	1	20x22x12-SF-1
14	213012510021	Hook welding	1	
15	910300500006	Nut	1	G889. 1-M12-10
16	213012520006	Spring	1	10x1. 6x55

17	910300500004	Nut	2	G889. 1-M8-10
18	213012520005	Connecting plate	1	
19	910200200062	Screw	8	G70. 1-M8x45-8. 8
20	910400500006	Washer	8	G93-8
21	910400100006	Washer	8	G97. 1-8-200HV
22	213012520014	L wear out plate	4	
23	910100300023	Bolt	2	G5783-M8x25-8. 8
I	213098510020	Hook components	1	

Fig. 7 Load roller

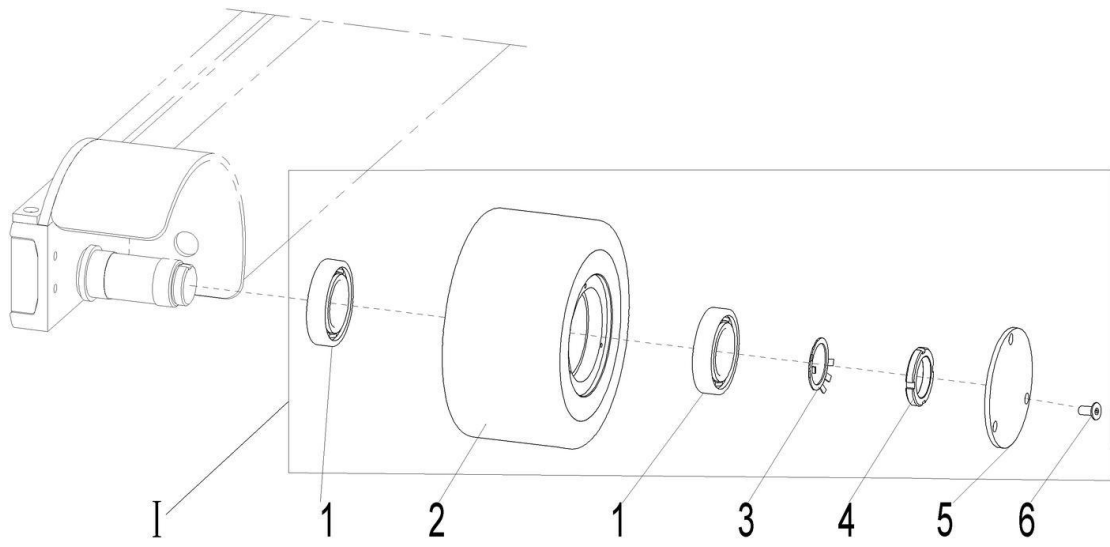


Fig. 7 Load Roller

No.	Art No.	Description	Qty.	Note
1	213017001000	Load roller assembly	2	267x135(PU)
2	910700200026	Bearing	2	GB276-6211-2RS
3	940300300016	Roller	1	267x135(steel core PU)
4	910400900017	Washer	1	GB858-48
5	910300700007	Nut	1	GB810-M48x1.5
6	213017020000	End cap	1	140x6
7	910200400017	Screw	3	GB70.3-M6x16-8.8

Fig. 8 Platform

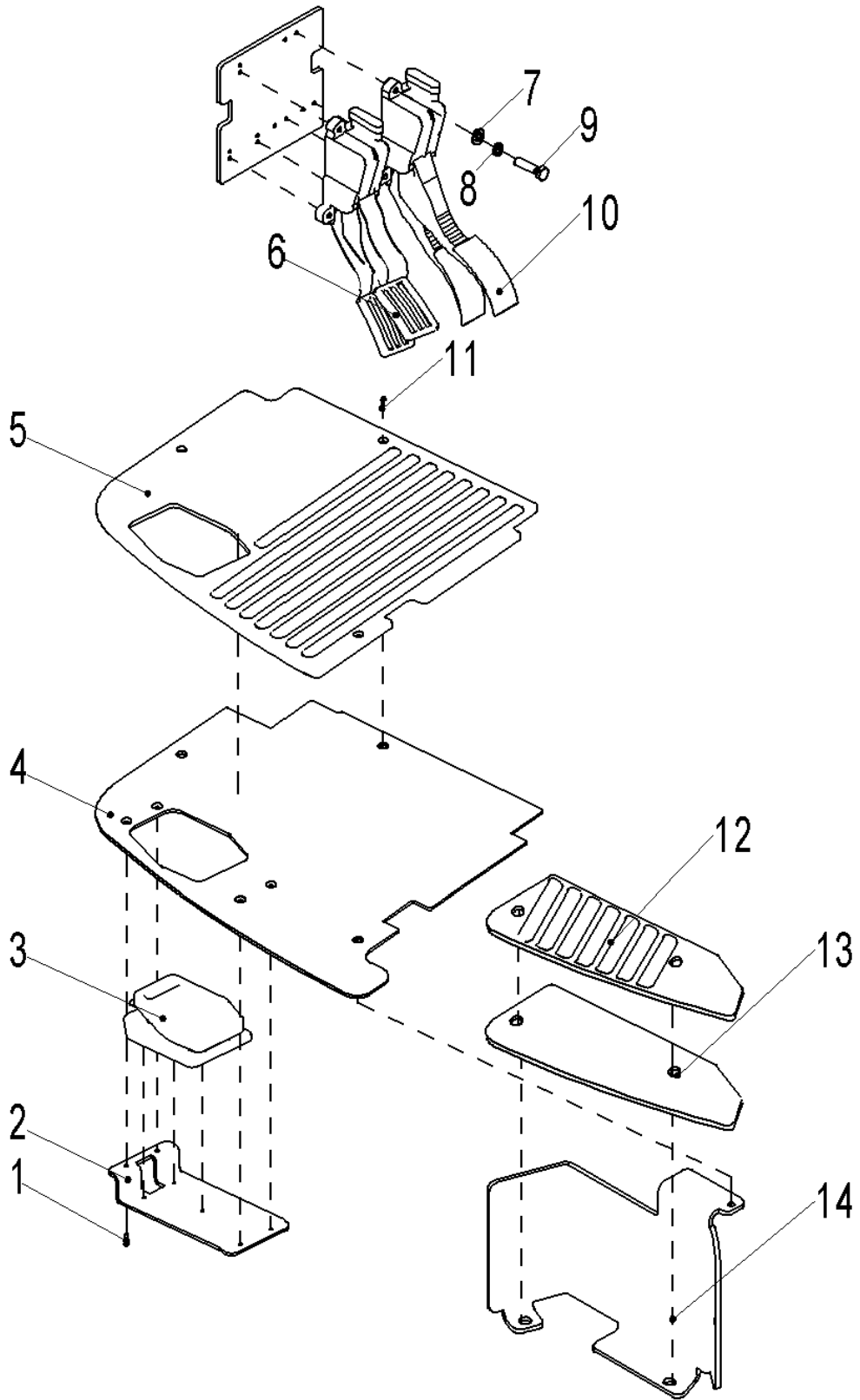


Fig. 8 Platform

No.	Art No.	Description	Qty.	Note
1	910200400009	Screw	4	GB70. 3-M5x8-8. 8
2	213018020302	Mounting plate	1	
3	920201000004	Foot pedal	1	FS-71S-10-W-2-18 /2
4	213018020200	Platform	1	
5	213018020301	Rubber platform	1	
6	921700100012	Brake platform	1	
7	910400100006	Washer	6	GB97. 1-8-200HV
8	910400500006	Washer	6	GB93-8
9	941100400001	Screw	6	M8x20-8. 8
10	921700100011	Accelerator platform	1	
11	941100100005	Screw	5	M10x15-8. 8
12	213018020203	Rubber Platform	1	
13	213018020202	Platform	1	
14	213018010000	Frame welding	1	

Fig. 9 Oil tank function group

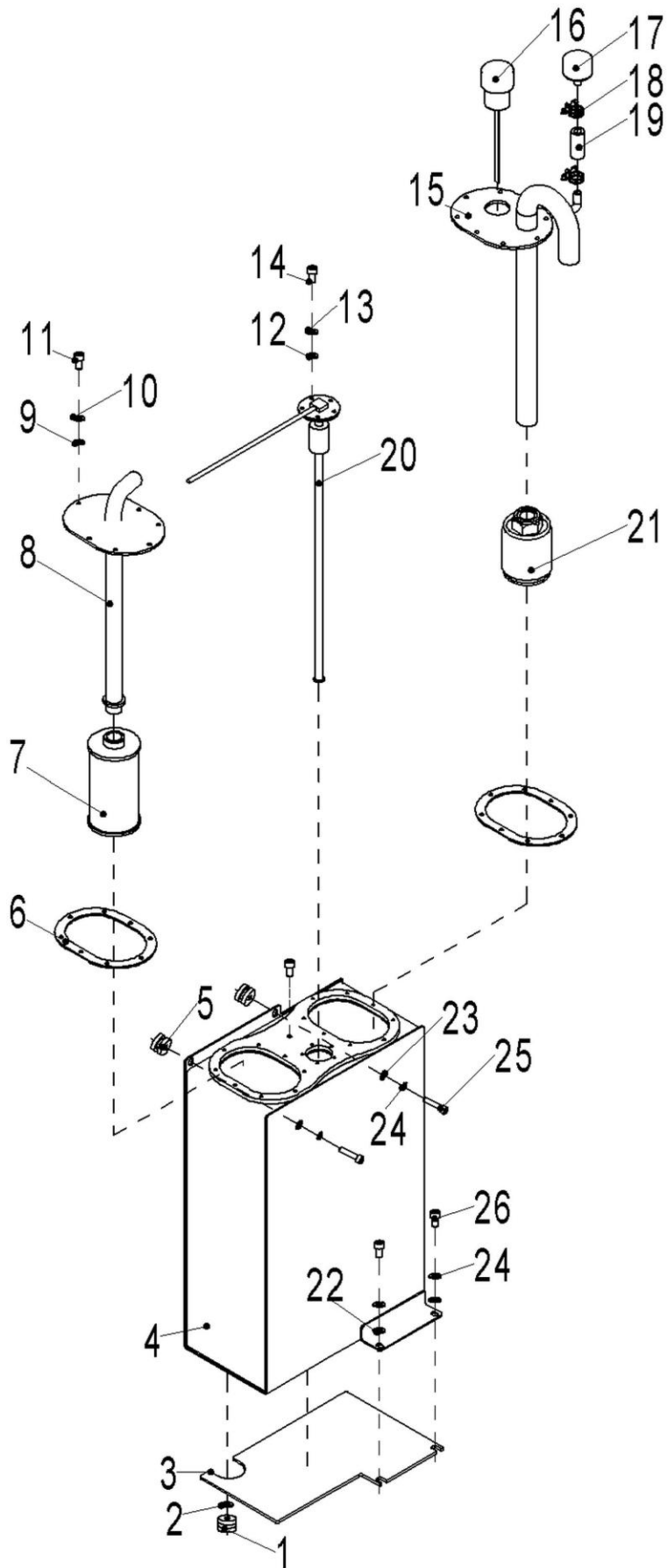


Fig. 9 Oil Tank Function Group

No.	Art No.	Description	Qty.	Note
1	255019020015	Oil outlet plug	1	M20x1.5
2	910800900001	Washer	1	JB982-20
3	213019020200	Rubber pad	1	
4	213019010020	Oil tank welding	1	
5	213019020009	Pad I	2	
6	251019020005	Sealing pad	2	168x118x0.5-R
7	951000300002	Filter	1	H24C7-50302
8	213019010022	Mounting frame 2	1	
9	910400100005	Washer	16	GB97.1-6-200HV
10	910400500005	Washer	16	GB93-6
11	910100300010	Bolt	16	GB5783-M6x16-8. 8
12	910400100004	Washer	5	GB97.1-5-200HV
13	910400500004	Washer	5	GB93-5
14	910100300003	Bolt	5	GB5783-M5x12-8. 8
15	213019010021	Mounting frame welding	1	
16	253519010004	Filling cap	1	
17	253519010005	Breather	1	HS0403
18	911000600002	Hoop	2	QC/T390-(13-16)
19	900200401001	Hose	1	13x23
20	921800100010	Sensor	1	NLYW-550
21	951000400001	Filter	1	H24C7-50302
22	910400100006	Washer	4	GB93-8

Fig. 9 Oil tank function group

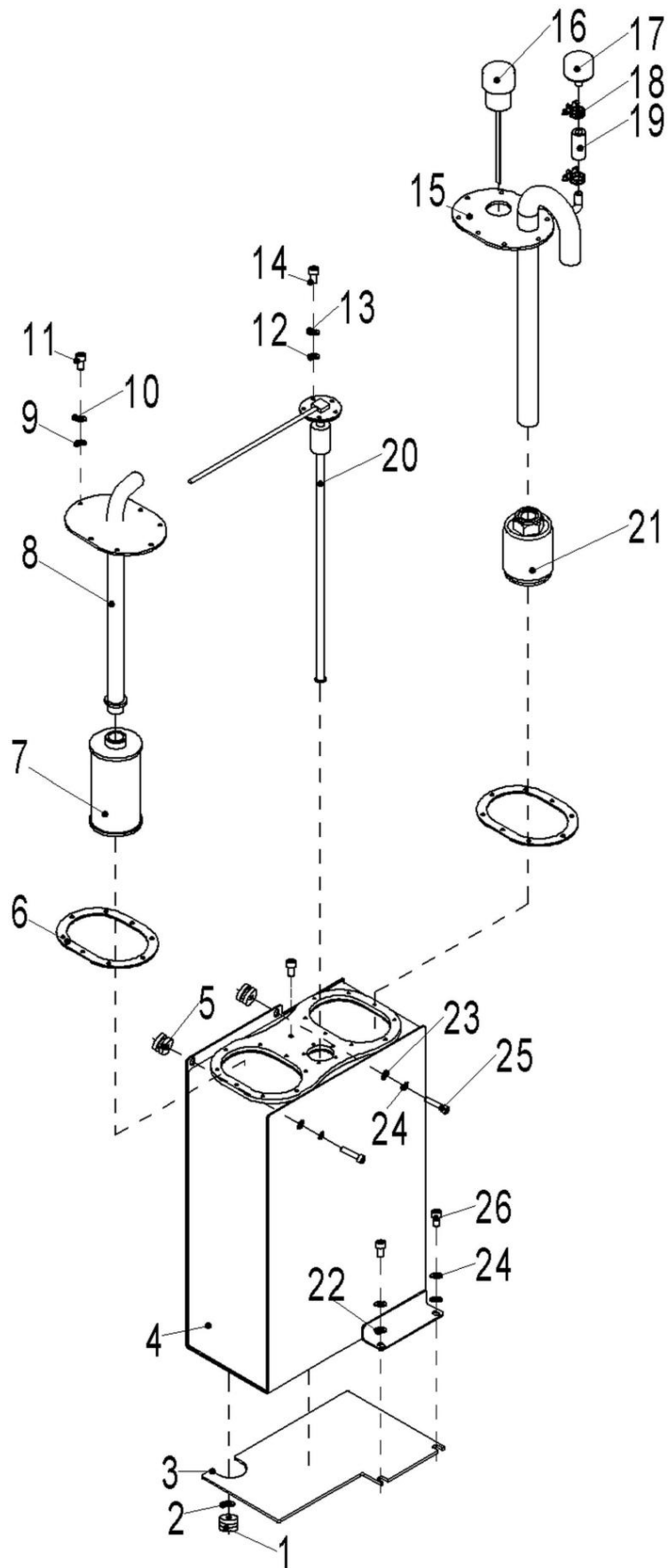


Fig. 9 Oil Tank Function Group

No.	Art No.	Description	Qty.	Note
23	910400500006	Washer	4	GB97.1-8-200HV
24	910200200060	Screw	2	GB70.1-M8x35-8.8
25	910200200057	Screw	2	GB70.1-M8x20-8.8
26	213019020201	Screw	1	GB825-M8

Fig. 10 Cylinder function group

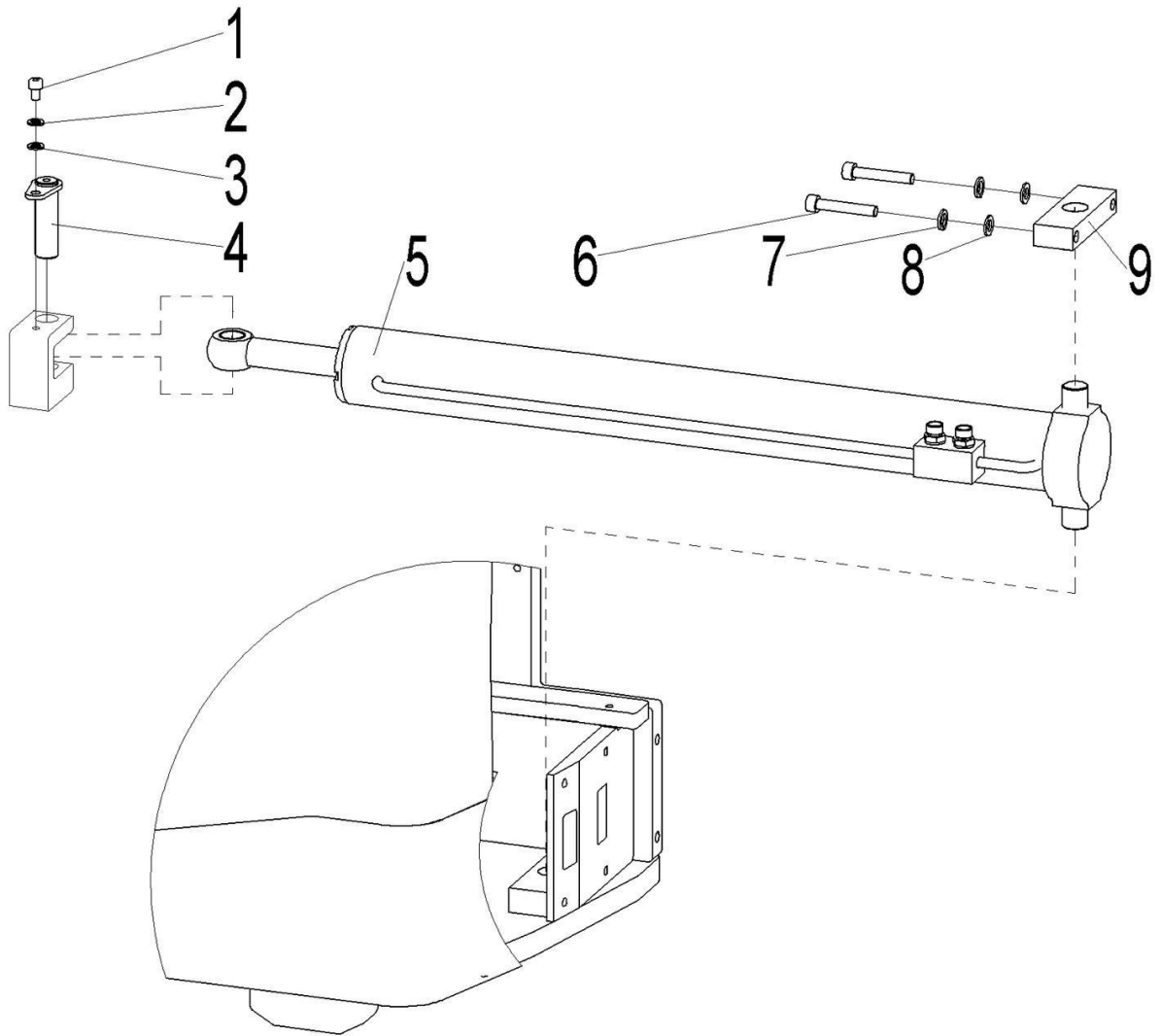


Fig. 10 Cylinder Function Group

No.	Art No.	Description	Qty.	Note
1	910200200057	Screw	1	GB70.1-M8x20-8.8
2	910400500006	Washer	1	GB93-8
3	910400100006	Washer	1	GB97.1-8-200HV
4	213020010001	Axle with plate	1	22x70
5	212020010020	Cylinder (Q)63x28x574	1	RT16N two stage mast
	212020010021	Cylinder (Q)63x28x592		RT16N three stage mast
	211020010021	Cylinder (Q)63x28x544		RT14N two stage mast
	211020010020	Cylinder (Q)63x28x567		RT14N three stage mast
6	910100100034	Bolt	2	GB5782-M10x55-8.8
7	910400500007	Washer	2	GB93-10
8	910400100007	Washer	2	GB97.1-10-200HV
9	213020020000	Connecting base	1	

Fig. 11 Truck body

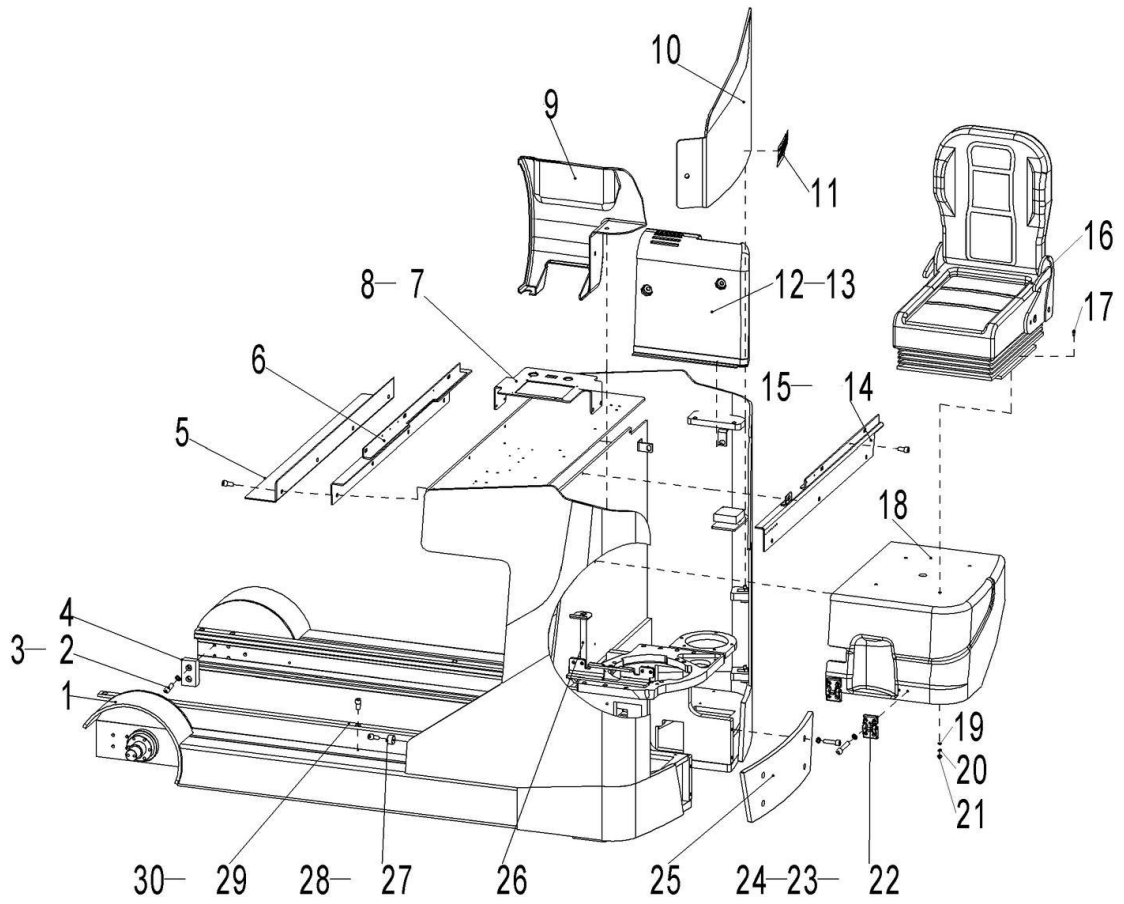


Fig. 11 Truck Body

No.	Art No.	Description	Qty.	Note
1	212021510020	RT16N Truck body welding	1	
	211021510020	RT14N Truck body welding		
2	910400500008	Washer	12	GB93-12
3	910200200098	Screw	4	GB70.1-M12x30-8.8
4	216521520001	Damping block	2	
5	213021520036	Plate	1	
6	213021510027	Fixing base welding 2	1	
7	213021520203	Fixing base (multi-tandem valve)	1	
8	910200400017	Screw	4	GB70.3-M6x16-8.8
9	213021520311	Cover	1	
10	213021510021	Side door welding	1	
11	213047020200	Sticker 1	1	
12	213021520202	Seal plate	1	
13	941100100005	Screw	15	M10x15-8.8
14	213021510023	Fixing base welding	1	
15	940400400003	Nut	12	M10-t(3-5)
16	213037510000	Seat	1	
17	910100300023	Bolt	1	GB5783-M8x25-8.8
18	213021510022	Protective cover		
19	910400100006	Washer	5	GB97.1-8-200HV
20	910400500006	Washer	4	GB93-8
21	910300100006	Nut	4	GB6170-M8-10

22	272021010002	Hinge welding	2	
23	910400500006	Washer	4	GB93-8
24	910200200058	Screw	4	GB70.1-M8x25-8.8
25	213021520201	Seal plate	1	
26	213021501021	Bar	1	
27	532621520062	Damping pad	2	30x9x18
28	910200200055	Screw	2	G70.1-M8x16-8.8
29	212021520203	Guiderail	2	
30	910200400025	Screw	8	GB70.3-M8x20-8.8

Fig. 12 Handle components

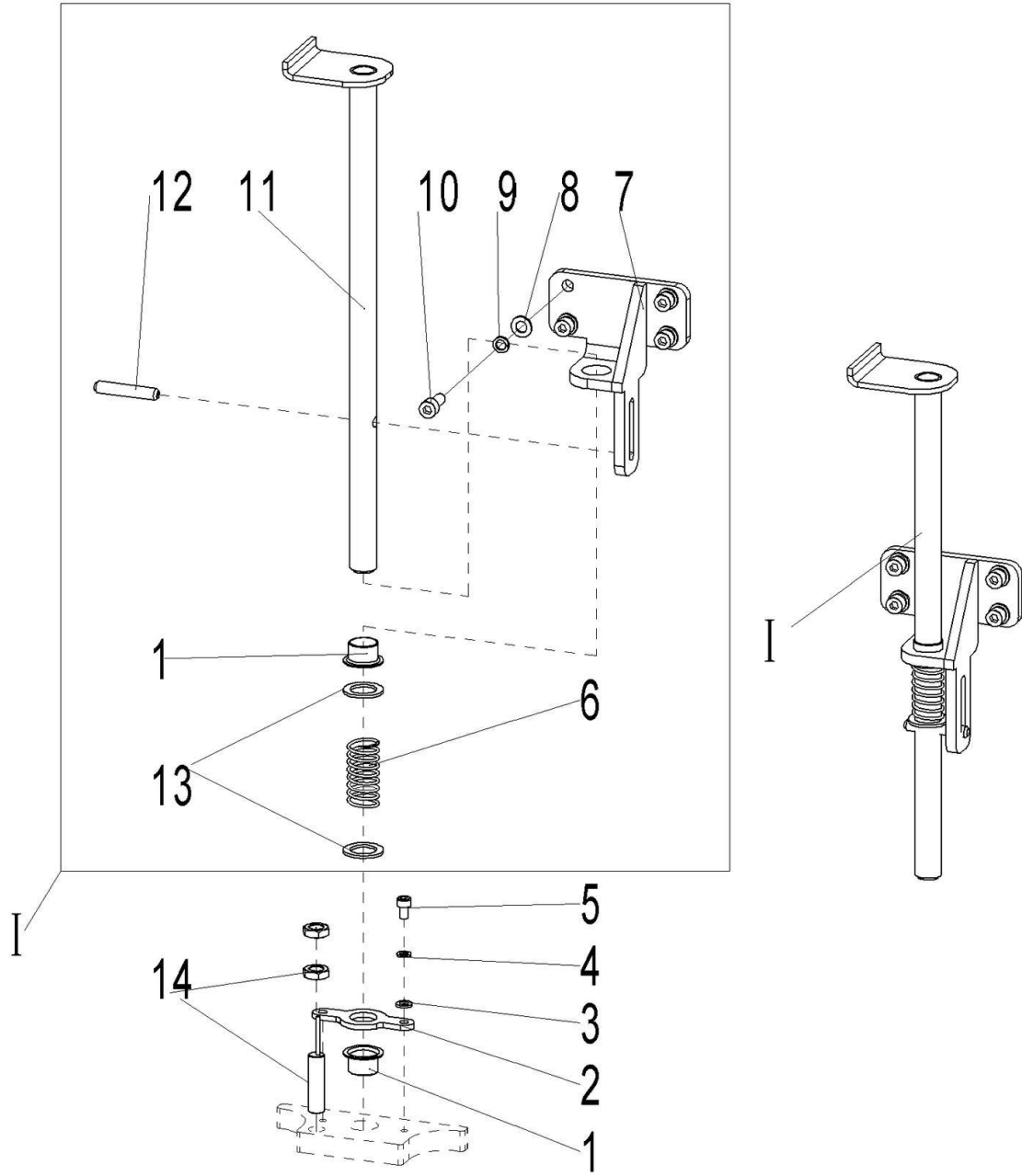


Fig. 12 Handle Components

No.	Art No.	Description	Qty.	Note
I	213021501021	Bar components	1	
1	940500200006	Bushing with shoulder	2	20x22x15-SF-1
2	213021520230	Washer	1	t=4.0
3	910400100005	Washer	2	GB97.1-6-200HV
4	910400500005	Washer	2	GB93-6
5	910200200033	Screw	2	GB70.1-M6x12-8.8
6	213021520051	Spring	1	24x2x50
7	213021510026	Bar welding	1	
8	910400100006	Washer	4	GB97.1-8-200HV
9	910400500006	Washer	4	GB93-8
10	910200200057	Screw	4	GB70.1-M8x20-8.8
11	213021510025	Limit axle welding	1	
12	910600400048	Dowel pin	1	GB879.1-8x50
13	213021520054	Washer	2	30x21x4
14	920200400009	Proximity switch	1	Fi4-G12-CP6L

Fig. 13 Overhead guard components

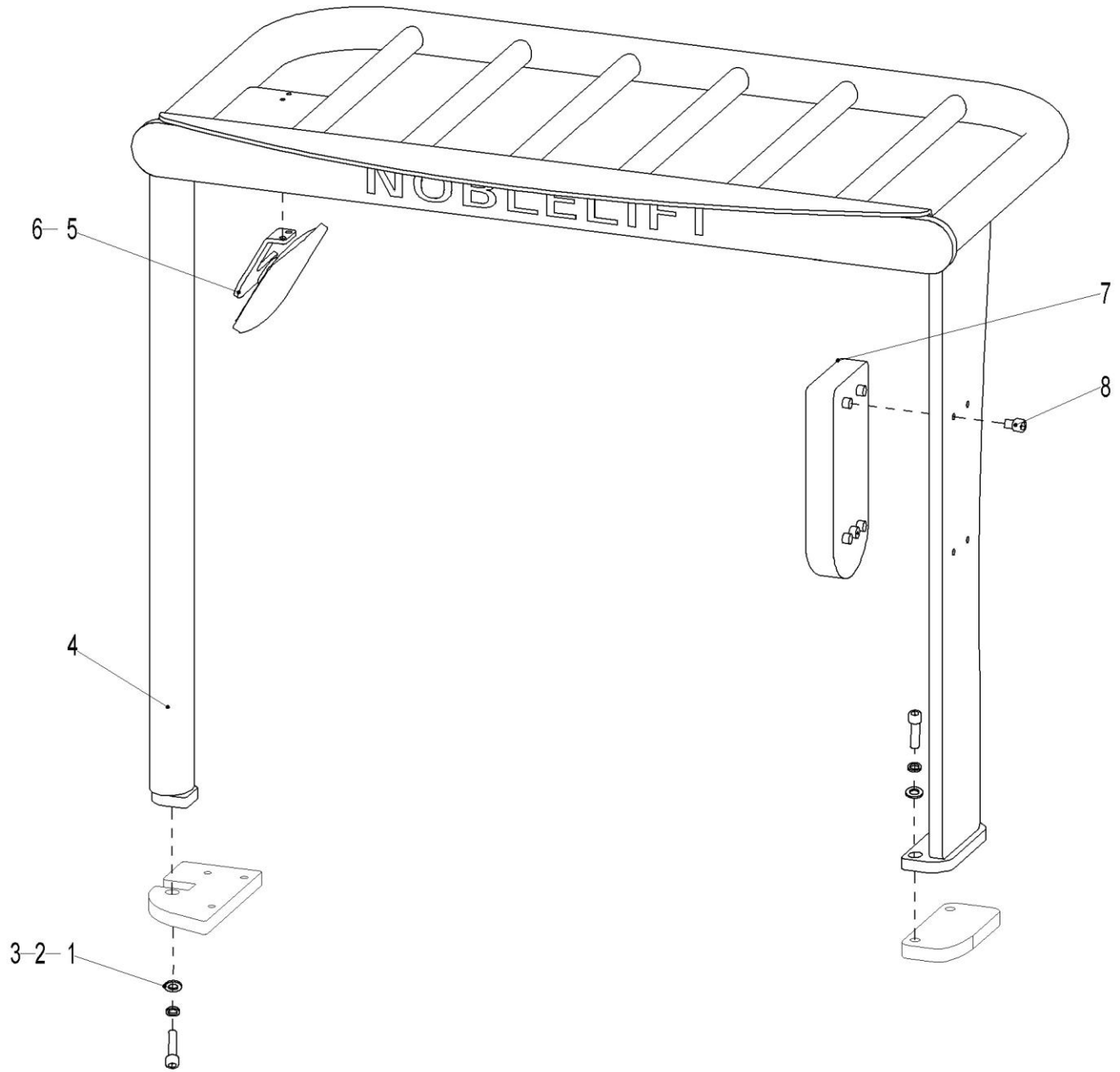


Fig. 13 Overhead Guard Components

No.	Art No.	Description	Qty.	Note
1	910100300071	Bolt	3	GB5783-M16x45-8.8
2	910400500010	Washer	3	GB93-16
3	910400100010	Washer	3	GB97.1-16-200HV
4	213022010020	Overhead guard welding	1	
5	213022020207	Mirror frame	1	
6	940800100001	Internal back mirror	1	EQ-140
7	213022010021	Backrest	1	
8	910201500005	Screw	4	GB846-ST3.5x25

Fig. 14 Truck body (hydraulic pipeline 3 ways)

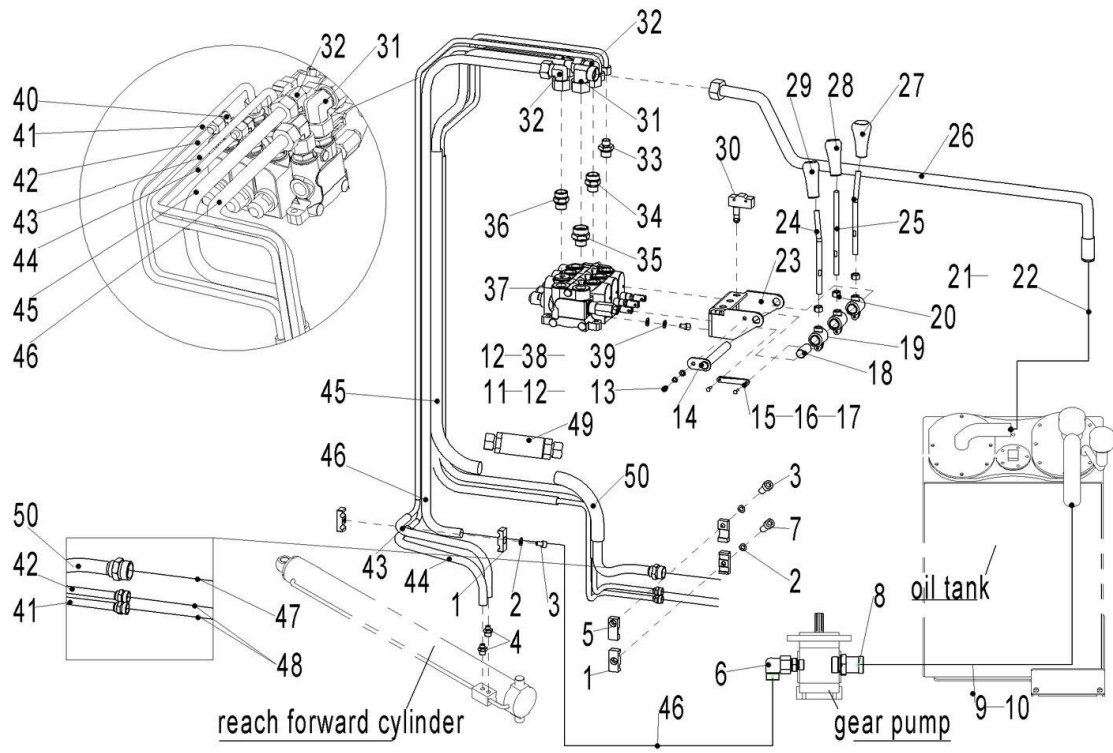


Fig. 14 Truck Body (Hydraulic pipeline three ways)

No.	Art No.	Description	Qty.	Note
1	201044520027	Clip	3	2X10
2	910400500006	Spring Washer	3	GB93-8
3	910200200058	Screw	2	GB70.1-M8x25-8.8
4	950400400010	Joint	2	(Straight)10-M14x1.5-M16x1.5-2
5	213044520110	Clip 18	2	
6	950401100005	Joint	1	(elbow -0R)18-G1/2-M26x1.5-24
7	910200200058	Screw	1	GB70.1-M8x25-8.8
8	213025020015	Joint	1	(Straight)G1-34
9	213025020016	Oil suction hose	1	44x34x550
10	911000600006	Hoop	2	QC/T390-(40-45)
11	910200200033	Screw	1	GB70.1-M6x12-8.8
12	910400100005	Washer	7	GB97.1-6-200HV
13	910300500003	Nut	1	GB889.1-M6-10
14	201025010001	Plate with axle	1	16x137
15	213025020019	Plate	3	
16	910600700002	Short axle	6	GB882-B4x18x1
17	910600600005	Split pin	6	GB91-1.6x10
18	940500100007	Bushing	3	16x18x20-SF-1
19	213025020020	Tiller base	3	
20	910300100007	Nut	3	GB6170-M10-10
21	213025020011	Oil return hose	1	37x25x300
22	911000600004	Hoop	2	QC/T390-(34-38)

23	213025020018	Mounting frame	1	
24	213025020207	Control lever 1	2	
25	213025020208	Control lever 2	1	
26	213025020000	Hydraulic pipe welding 1	1	
27	216525020011	Tilt lever	1	
28	216525020010	Reach forward lever	1	
29	216525020009	Lifting lever	1	
30	920200300004	Micro switch	3	RZ-15GQ22-B3
31	950400200007	Joint	1	(steering)22-2xM30x2-24°
32	950400200006	Joint	2	(steering)18-2xM26x1.5-24°
33	950400400012	Joint	4	(Straight)10-M16x1.5-M20x1.5-2°
34	213025020007	Joint	1	(Straight) 18-M20x1.5-M26x1.5-24
35	213025020008	Joint	1	(Straight)22-M22x1.5-M30x2-24
36	950400400008	Joint	1	(Straight -0R)18-M22x1.5-M26x1.5-24
37	950700100004	Multi-tandem valve three	1	MSV04-3132-108
38	910400500005	Spring Washer	6	GB93-6
39	910200200032	Screw	6	GB70.1-M6x10-8.8
40	950400200003	Joint	1	(steering)10-2xM16x1.5-24°
41	213025020205	Hydraulic pipe assembly	1	10-L980-1SC-24%d
42	213025020204	Hydraulic pipe assembly	1	10-L950-1SC-24%d
43	213025020203	Hydraulic pipe assembly	1	10-L500-1SC-24%d
44	213025020202	Hydraulic pipe assembly	1	10-L550-1SC-24%d
45	213025020201	Hydraulic pipe assembly	1	18-L760-2SC-24%d

46	213025020200	Hydraulic pipe assembly	1	18-L1250-2SC-24°d
47	212025020000	Hydraulic pipe assembly	1	(Straight)18-L1450-2SC-24°
48	201025020014	Hydraulic pipe assembly	2	(Straight)10-L1200-1SC-24°
49	950700300005	Speed limit valve	1	XSF-F16L-50
50	213025020022	Hydraulic pipe welding 2	1	

Fig. 15 Truck body (hydraulic pipeline 4 ways)

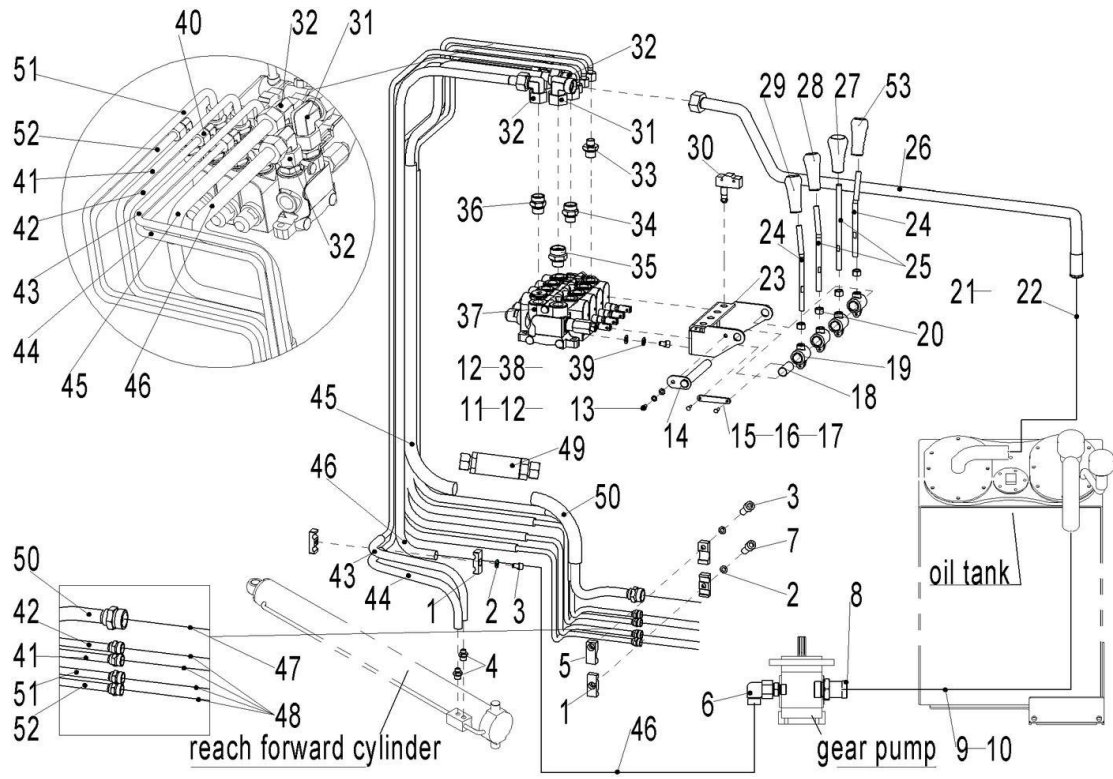


Fig. 15 Truck Body (Hydraulic pipeline 4 ways)

No.	Art No.	Description	Qty.	Note
1	201044520027	Clip	5	2X10
2	910400500006	Spring Washer	3	GB93-8
3	910200200058	Screw	2	GB70.1-M8x25-8.8
4	950400400010	Joint	2	(Straight)10-M14x1.5-M16x1.5-24
5	213044520110	Clip 18	2	
6	950401100005	Joint	1	(锁定弯 -0R)18-G1/2-M26x1.5-24°
7	910200200058	Screw	1	GB70.1-M8x25-8.8
8	213025020015	Joint	1	(Straight)G1-34
9	213025020016	Oil suction hose	1	44x34x550
10	911000600006	Hoop	2	QC/T390-(40-45)
11	910200200033	Screw	1	GB70.1-M6x12-8.8
12	910400100005	Washer	9	GB97.1-6-200HV
13	910300500003	Nut	1	GB889.1-M6-10
14	201025010001	Plate with axle	1	16x137
15	213025020019	Plate	4	
16	910600700002	Short axle	8	GB882-B4x18x1
17	910600600005	Split pin	8	GB91-1.6x10
18	940500100007	Bushing	4	16x18x20-SF-1
19	213025020020	Tiller base	4	
20	910300100007	Nut	4	GB6170-M10-10
21	213025020011	Oil return hose	1	37x25x300
22	911000600004	Hoop	2	QC/T390-(34-38)
23	213025520003	Mounting frame	1	

24	213025020207	Control lever 1	2	
25	213025520202	Control lever 2	2	
26	213025020000	Hydraulic pipe welding 1	1	
27	216525020011	Tilt lever	1	
28	216525020010	Reach forward lever	1	
29	216525020009	Lifting lever	1	
30	920200300004	Micro switch	4	RZ-15GQ22-B3
31	950400200007	Joint	1	(steering)22-2xM30x2-24°
32	950400200006	Joint	2	(steering)18-2xM26x1.5-24°
33	950400400012	Joint	6	(Straight)10-M16x1.5-M20x1.5-24°
34	213025020007	Joint	1	(Straight)18-M20x1.5-M26x1.5-24°
35	213025020008	Joint	1	(Straight)22-M22x1.5-M30x2-24°
36	950400400008	Joint	1	(Straight-0R)18-M22x1.5-M26x1.5-24°
37	950700100006	Multi-tandem valve 4 ways	1	MSV04-41323-108
38	910400500005	Spring Washer	8	GB93-6
39	910200200032	Screw	8	GB70.1-M6x10-8.8
40	950400200003	Joint	1	(steering)10-2xM16x1.5-24°
41	213025020205	Hydraulic pipe assembly	1	10-L980-1SC-24%d
42	213025020204	Hydraulic pipe assembly	1	10-L950-1SC-24%d
43	213025020203	Hydraulic pipe assembly	1	10-L500-1SC-24%d
44	213025020202	Hydraulic pipe assembly	1	10-L550-1SC-24%d
45	213025020201	Hydraulic pipe assembly	1	18-L760-2SC-24%d
46	213025020200	Hydraulic pipe assembly	1	18-L1250-2SC-24%d

47	212025020000	Hydraulic pipe assembly	1	(Straight)18-L1450-2SC-24°
48	201025020014	Hydraulic pipe assembly	2	(Straight)10-L1200-1SC-24°
49	950700300005	Speed limit valve	1	XSF-F16L-50
50	213025020022	Hydraulic pipe welding 2	1	
51	213025520200	Hydraulic pipe assembly		10-L1060-1SC-24%d
52	213025520201	Hydraulic pipe assembly		10-L1030-1SC-24%d
53	216525520000	Side shift lever	1	

Fig. 16 Electric steering unit

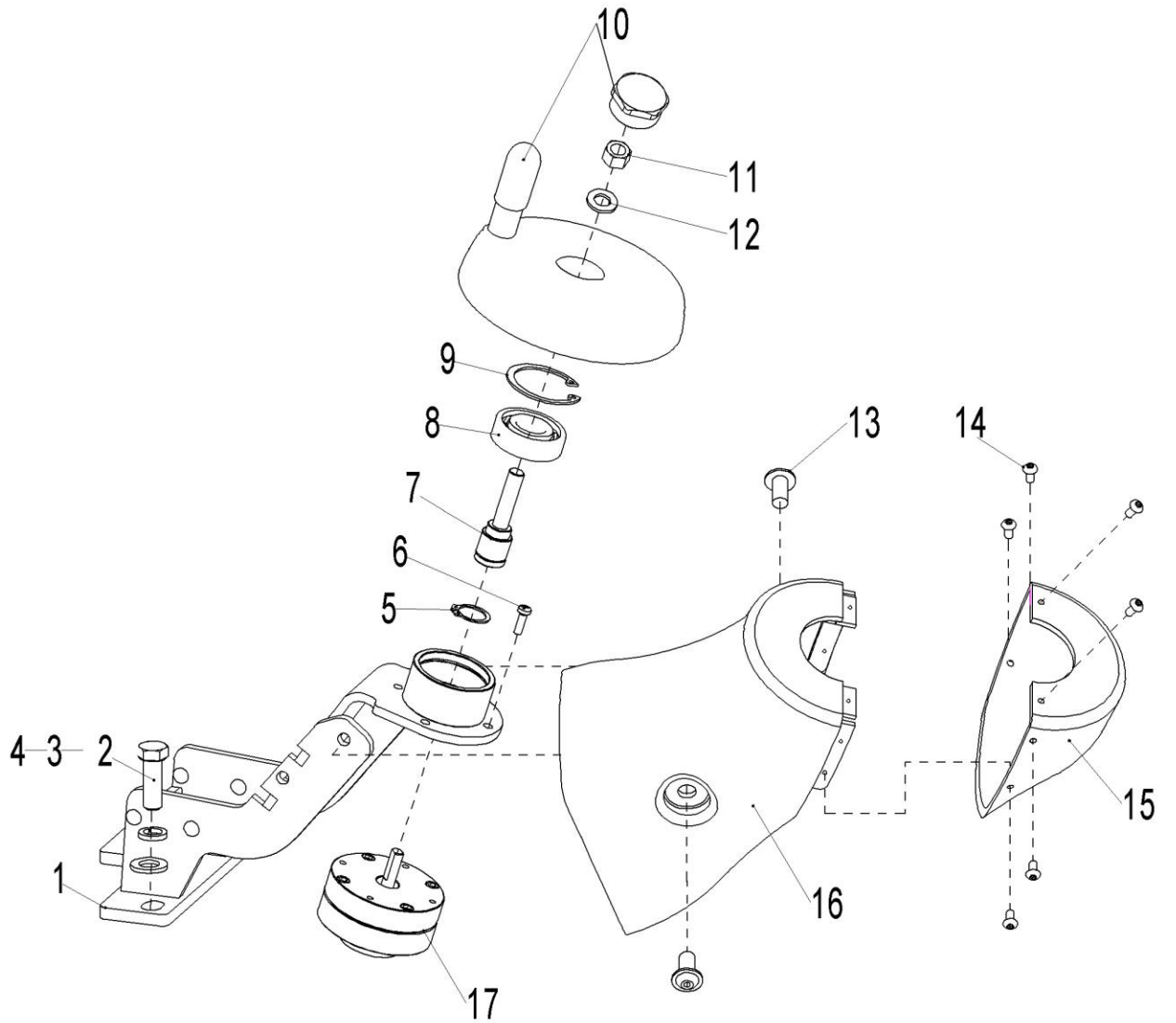


Fig. 16 Electric Steering Unit

No.	Art No.	Description	Qty.	Note
1	213031510020	Fixing base welding	1	
2	910100300051	Bolt	3	GB5783-M12x35-8.8
3	910400100008	Washer	4	GB97.1-12-200HV
4	910400500008	Spring Washer	4	GB93-12
5	910401300011	Circlip	1	GB894.1-20
6	910200500040	Screw	4	GB818-M5x16-4.8
7	213031520202	Fixing axle	1	20x66
8	910700200019	Bearing	1	GB276-6204-2RS
9	910401400013	Circlip	1	GB893.1-47
10	213031510021	Hand wheel		VDS.150+IA-8
11	910300100007	Nut	1	GB6170-M10-10
12	910400100007	Washer	1	GB97.1-10-200HV
13	941100100005	Screw	2	M10x15-8.8
14	910200500022	Screw	6	GB818-M4x12-4.8
15	213031520200	Protective cover	1	
16	213031520201	Protective cover	1	
17	921800200004	Potentiometer	1	TY1204-1

Fig. 17 Three stage mast (fork carriage components)

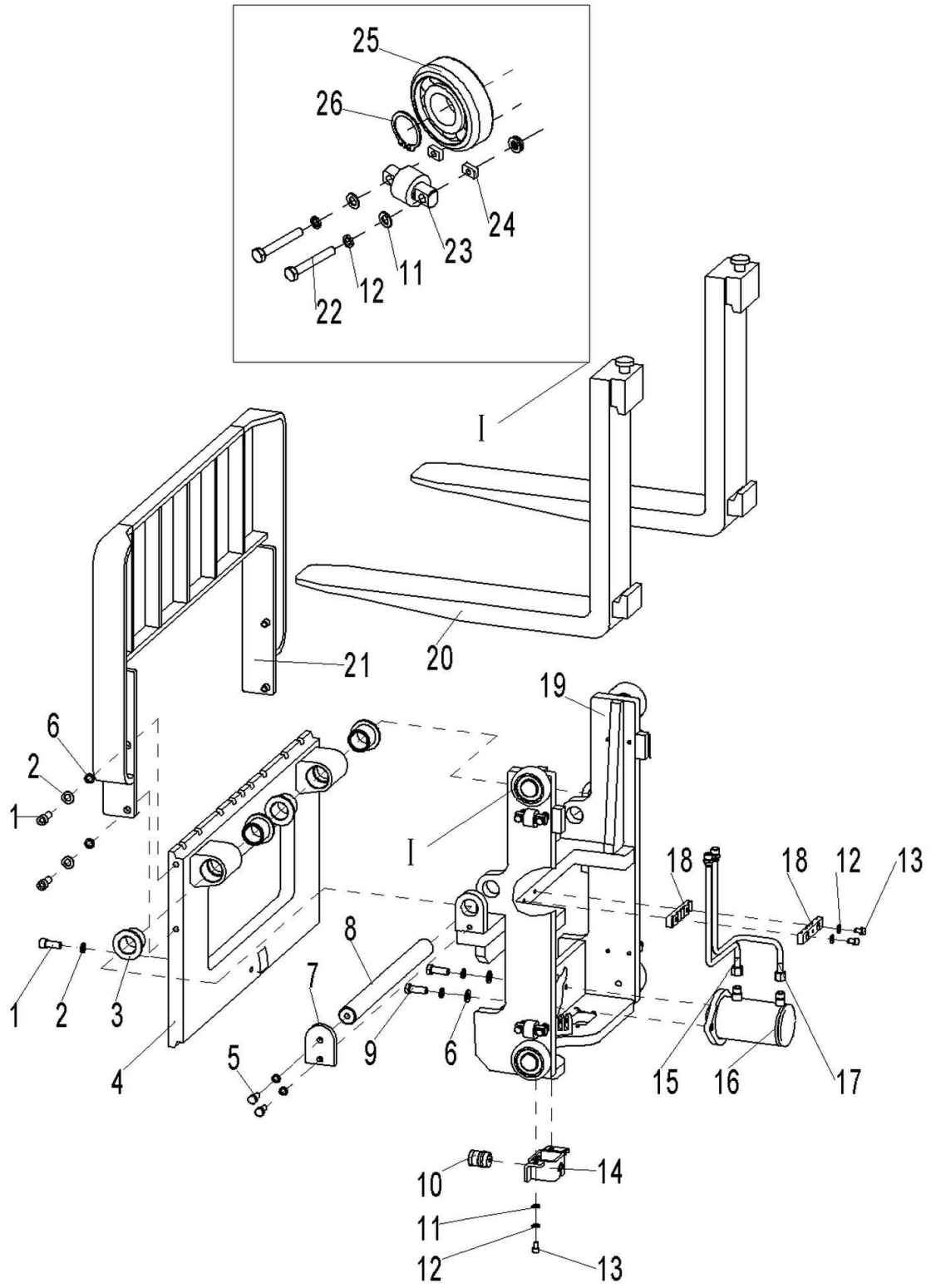


Fig. 17 Three Stage Mast (fork carriage components)

No.	Art No.	Description	Qty.	Note
1	910200200098	Screw	1	GB70. 1-M12x30-8. 8
2	910400500008	Spring Washer	7	GB93-12
3	940500400001	Bearing	2	45x55x40
4	212038010021	Fork carriage welding (three stage mast full free lifting)	1	
5	910100300037	Screw	4	GB5783-M10x30-8. 8
6	910400100008	Washer	6	GB97. 1-12-200HV
7	213038020027	Baffle	2	
8	213038020017	Axle 45x620	1	
9	910100300051	Bolt	2	GB5783-M12x35-8. 8
10	921100100016	Camera	1	DF-8013R-2. 9
11	910400100006	Washer	19	GB97. 1-8-200HV
12	910400500006	Spring washer	21	GB93-8
13	910200200058	Screw	5	GB70. 1-M8x25-8. 8
14	213036010000	Fixing plate welding	1	
15	213044520112	Hydraulic pipe welding 8	1	
16	201520510000	Cylinder	1	75x40x35
17	212044520207	Hydraulic pipe welding 9	1	
18	201044520062	Clip	2	2X10, 1X8
19	212038010020	Inner carriage welding	1	
20	940100100008	Hook	2	II A fork 120x40x1070
	940100100009	Hook	2	II A fork 120x40x1220
	940100100011	Hook	2	II A fork 120x40x1370

	940100100012	Hook	2	IIA fork 120x40x1520
21	216540510000	Load backrest welding (885)	1	
	216540510001	Load backrest welding (872)	1	Side shift
22	910100100023	Bolt	8	GB5782-M8x45-8.8
23	940200200008	Side roller 34-CD=45	4	
24	940600500020	Washer DIN988-20x10x0.5	8	
	940600500018	Washer DIN988-20x10x0.3		
25	940200100008	Main roller	4	77.7x35x22.5
	940200100016	Main roller		78.6x35x22.5
	940200100017	Main roller		78.6x35x22.5
26	910401300018	Circlip	4	GB894.1-35
I	212098510020	Roller components	4	

Fig. 18 Three stage mast (outer mast)

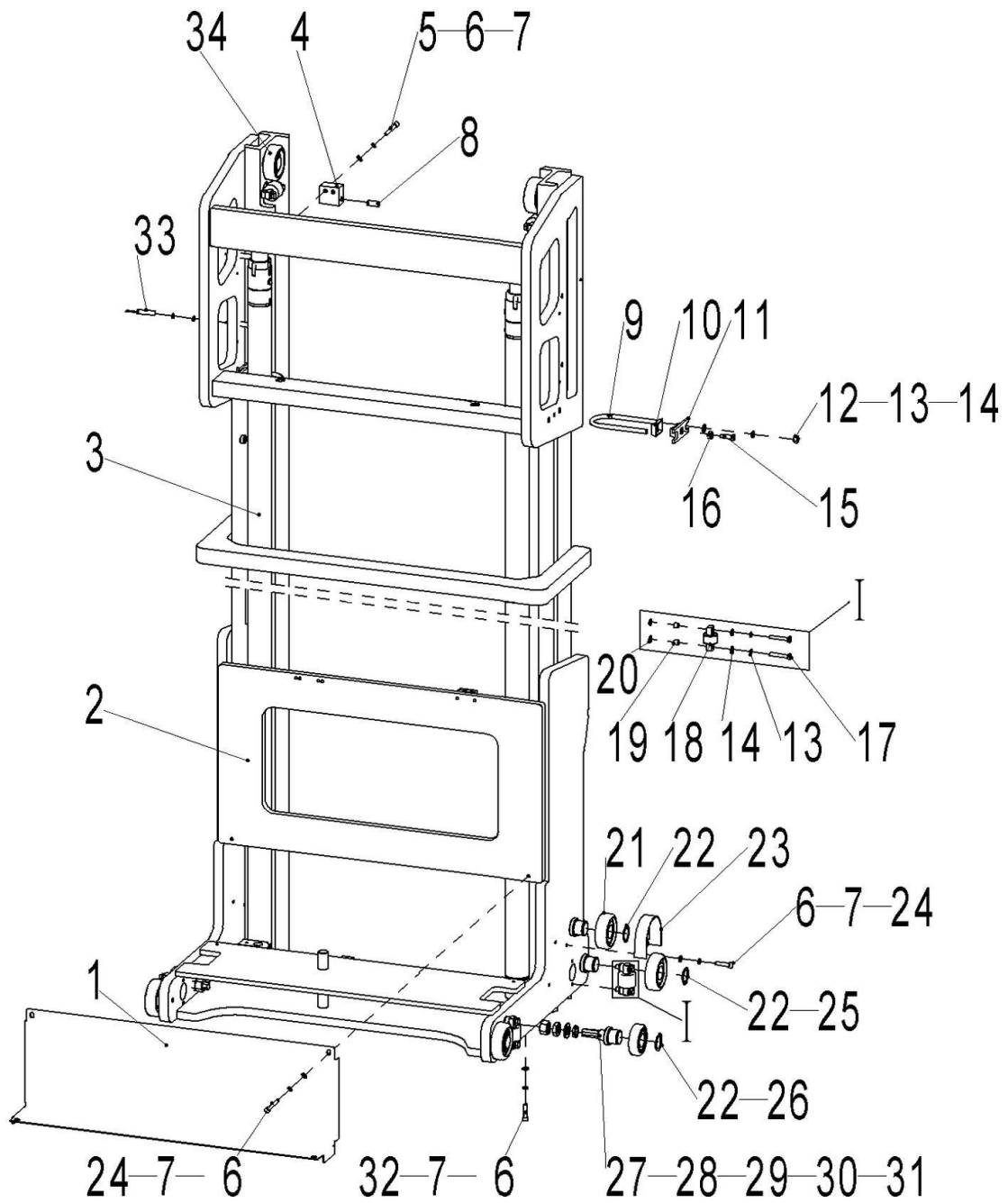


Fig. 18 Three Stage Mast (outer mast)

No.	Art No.	Description	Qty.	Note
1	212044020200	Seal plate	1	
2	212044510201	Outer mast welding	1	4500
	212044510202			5000
	212044510203			5300
	212044510204			5500
	212044510205			5800
	212044510206			6000
	212044510207			6500
	212044510208			7000
	212044510209			7500
	212044510210			8000
3	212044510231	Cylinder	2	4500
	212044510232			5000
	212044510233			5300
	212044510234			5500
	212044510235			5800
	212044510236			6000
	212044510237			6500
	212044510238			7000
	212044510239			7500
	212044510240			8000
4	212044520200	Mounting base	1	

5	910200300024	Screw GB70.1-M8X16-8.8	2	
6	910400500006	Washer GB93-8	8	
7	910400100006	Washer GB97.1-8-200HV	8	
8	920200400002	Proximity switch FI4-G12-OP6L	1	
9	213044520201	U bolt 65	2	
10	253544020005	Rubber bushing	2	
11	253544020006	Fixing base	2	
13	910400100007	Washer GB97.1-10-200HV	22	
13	910400500007	Spring washer GB93-10	16	
14	910300200002	Nut GB6171-M10X1.25-10	4	
15	910300100007	Nut GB6170-M10-10	2	
16	910100300041	Bolt GB5783-M10x50-8.8	2	
17	910100300039	Bolt GB5783-M10x40-8.8	12	
18	940200200007	Side roller 42-CD=60	6	
19	213044520316	Washer	4	t=10
	213044520317	Washer		t=12
20	940600500020	Washer DIN988-20x10x0.5	12	
	940600500018	Washer DIN988-20x10x0.3		
21	940200100014	Main roller	2	89.4 x35 x 28
	940200100013	Main roller		88.9 x35 x 28
	940200100015	Main roller		88.4 x35 x 28
22	910401300018	Circlip GB894.1-35	10	

23	213044520200	Protective cover (Main roller)	2	
24	910200200053	Screw GB70.1-M8X12-8.8	4	
25	940200100006	Main roller 92.4x35x28	4	
	940200100015	Main roller 92.7x35x28		
26	940200100008	Main roller 77.7x35x22.5	2	
27	213044520315	Axle for roller	2	
28	910400100012	Washer GB97.1-20-200HV	2	
29	910400500012	Spring washer GB93-20	2	
30	910300200005	Nut GB6171-M20X1.5-10	2	
31	910300400008	Nut GB6173-M20X1.5-5	1	
32	910200200060	ScrewGB70.1-M8X35-8. 8	2	
33	920200400009	Proximity switch FI4-G12-CP6L	1	
34	940200100008	Main roller	2	77.7x35x22.5
	940200100016	Main roller		78.6x35x22.5
	940200100017	Main roller		78.6x35x22.5
I	213098510021	Roller components	6	

Fig. 19 Three stage mast (middle mast)

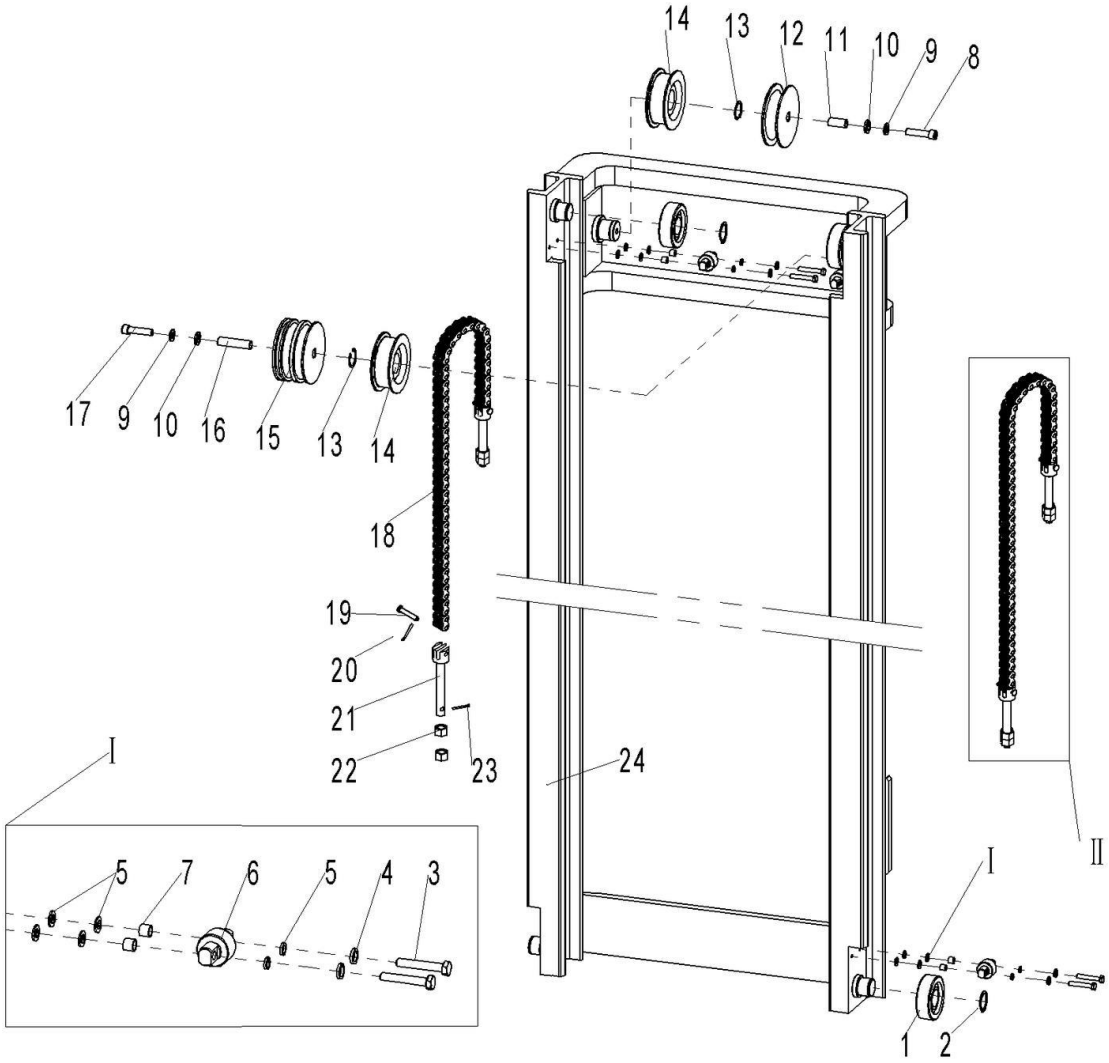


Fig. 19 Three Stage Mast (middle mast)

No.	Art No.	Description	Qty.	Note
1	940200100008	Main roller	4	77.7x35x22.5
	940200100016	Main roller		78.6x35x22.5
	940200100017	Main roller		78.6x35x22.5
2	910401300018	Circlip	4	GB894.1-35
3	910100100023	Bolt	8	GB5782-M8x45-8.8
4	910400500006	Spring washer	8	GB93-8
5	910400100006	Washer	8	GB97.1-8-200HV
6	940200200008	Side roller34-CD=45	4	
7	940600500020	Washer DIN988-20x10x0.5	8	
	940600500018	Washer DIN988-20x10x0.3		
8	910100100048	Bolt	1	GB5782-M12x50-8.8
9	910400500008	Spring washer	2	GB93-12
10	910400100008	Washer	2	GB97.1-12-200HV
11	213044520003	Spacer	1	17x13x36
12	213044520002	Pulley	1	75x34(Single groove)
13	910401300020	Circlip	2	GB894.1-40
14	940200500007	Bearing	2	HC235ZB-43501-100x40x3 1.3
15	213044520164	Pulley 110x65(Double groove)	1	
	213044520164	Pulley 110x65(Double groove)	2	Side shift
16	201044520039	Bushing 17x13x54	1	
	201030520009	Bushing 17x13x122	1	Side shift

17	910100300057	Bolt	1	GB5783-M12x70-8.8
18	910900400010	Chain	2	GB6074-LH1234
19	213044520006	Axle	2	8x50
20	910600600015	Split pin	2	GB91-2x20
21	532644020096	Bolt	2	M16x1.5x111
22	910300100010	Nut	4	GB6170-M16-10
23	910600600026	Split pin	4	GB91-3.2x20
24	212044510241	Middle mast welding	1	4500
	212044510242			5000
	212044510243			5300
	212044510244			5500
	212044510245			5800
	212044510246			6000
	212044510247			6500
	212044510248			7000
	212044510249			7500
	212044510250			8000
I	212098510020	Roller components	4	
II	212044510078	Lifting chain LH1244-111	2	4500
	212044510079	Lifting chain LH1244-121		5000
	212044510080	Lifting chain LH1244-125		5300
	212044510081	Lifting chain LH1244-129		5500
	212044510082	Lifting chain LH1244-133	2	5800

	212044510083	Lifting chain LH1244-135		6000
	212044510084	Lifting chain LH1244-147		6500
	212044510085	Lifting chain LH1244-155		7000
	212044510086	Lifting chain LH1244-163		7500
	212044510087	Lifting chain LH1244-173		8000

Fig. 20 Three stage mast (inner mast)

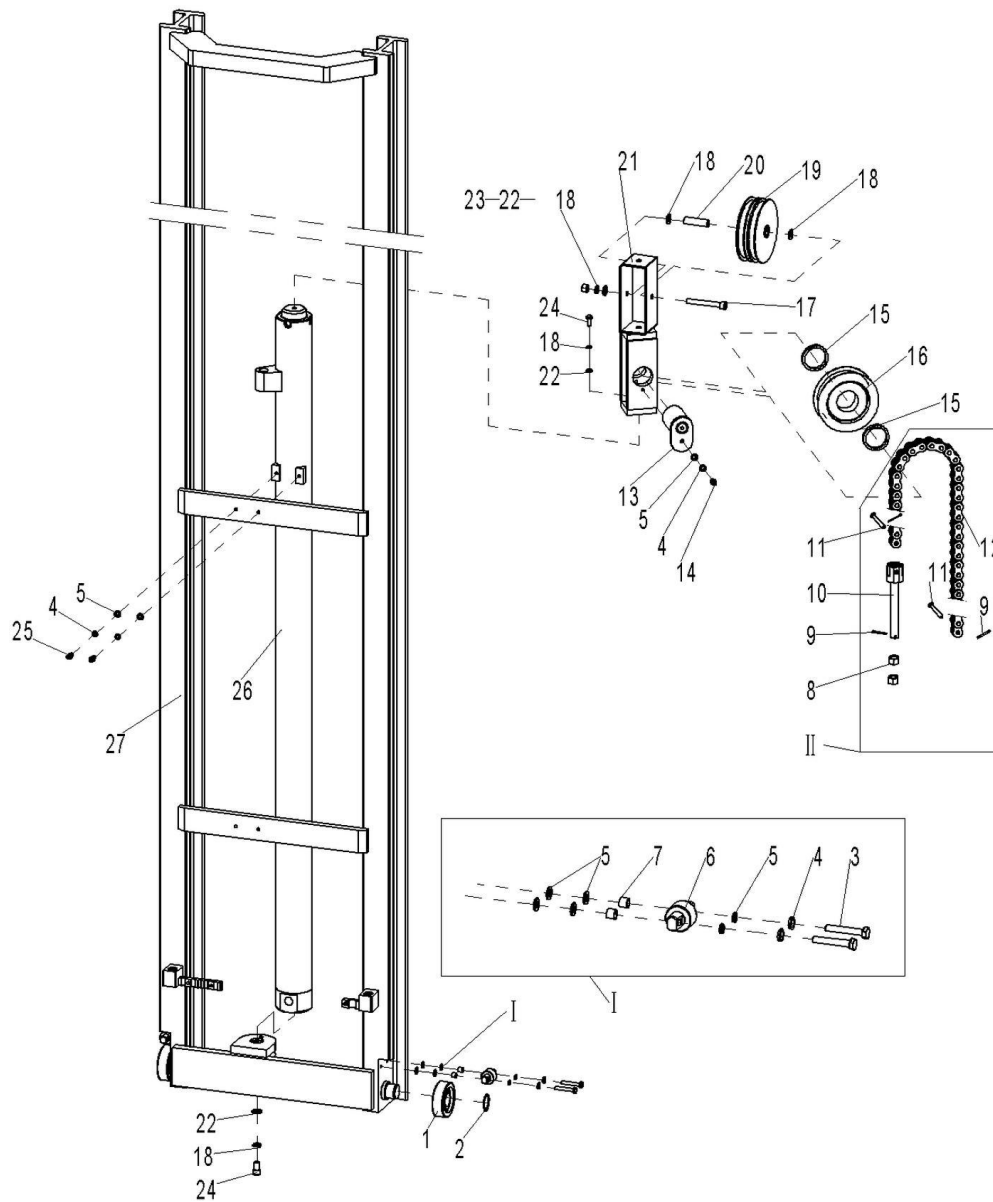


Fig. 20 Three Stage Mast (inner mast)

No.	Art No.	Description	Qty.	Note
1	940200100008	Main roller		77.7x35x22.5
	940200100016	Main roller		78.6x35x22.5
	940200100017	Main roller		78.6x35x22.5
2	910401300018	Circlip	2	GB894. 1-35
I	212098510020	Side roller components	2	
3	910100100023	Bolt	8	GB5782-M8x45-8.8
4	910400500006	Spring washer	8	GB93-8
5	910400100006	Washer	8	GB97. 1-8-200HV
6	940200200008	Side roller34-CD=45	4	
7	940600500020	Washer DIN988-20x10x0. 5	8	
	940600500018	Washer DIN988-20x10x0. 3		
II	212044510067	Lifting chain LH1634-59	1	4500
	212044510068	Lifting chain LH1634-63		5000
	212044510069	Lifting chain LH1634-65		5300
	212044510070	Lifting chain LH1634-67		5500
	212044510071	Lifting chain LH1634-69		5800
	212044510072	Lifting chain LH1634-71		6000
	212044510073	Lifting chain LH1634-75		6500
	212044510074	Lifting chain LH1634-79		7000
	212044510075	Lifting chain LH1634-83		7500
	212044510076	Lifting chain LH1634-87		8000
8	910300200005	Nut	2	GB6171-M20x1. 5-10
9	910600600030	Split pin	3	GB91-3. 2x30

10	213044520004	Bolt	1	M20x1.5-178
11	213044520005	Axle	2	9.5x50
12	910900400015	Chain	1	GB6074-LH1634
13	213044510002	Plate with axle	1	55x84
14	910200200055	Screw	1	GB70.1-M8x16-8.8
15	213044520029	Washer	2	65x55x10
16	940200500008	Bearing	1	782311H-135x55x38
17	910100100056	Bolt GB5782-M12x90-8.8	1	
	910100100119	Bolt GB5782-M12x150-8.8	1	Side shift
18	910400100008	Washer GB97.1-12-200HV	2	
19	213044520165	Pulley 145x60(Double groove)	1	
	213044520165	Pulley 145x60(Double groove)	2	Side shift
20	201044520053	Bushing 17x13x62	1	
	201030520009	Bushing 17x13x122	1	Side shift
21	213044510000	Mounting frame welding	1	
	213030510000	Mounting frame welding	1	Side shift
22	910400500008	Spring washer	2	GB93-12
23	910300100008	Nut	1	GB6170-M12-10
24	910200200098	Screw	1	GB70.1-M12x30-8.8
25	910200200062	Screw	2	GB70.1-M8x45-8.8
26	212044510221	Cylinder (M)	1	4500
	212044510222			5000
	212044510223			5300
	212044510224			5500

26	212044510225	Cylinder (M)	1	5800
	212044510226			6000
	212044510227			6500
	212044510228			7000
	212044510229			7500
	212044510230			8000
27	212044510211	Inner mast welding	1	4500
	212044510212			5000
	212044510213			5300
	212044510214			5500
	212044510215			5800
	212044510216			6000
	212044510217			6500
	212044510218			7000
	212044510219			7500
	212044510220			8000

Fig. 21 Three stage mast (hydraulic pipeline three ways)

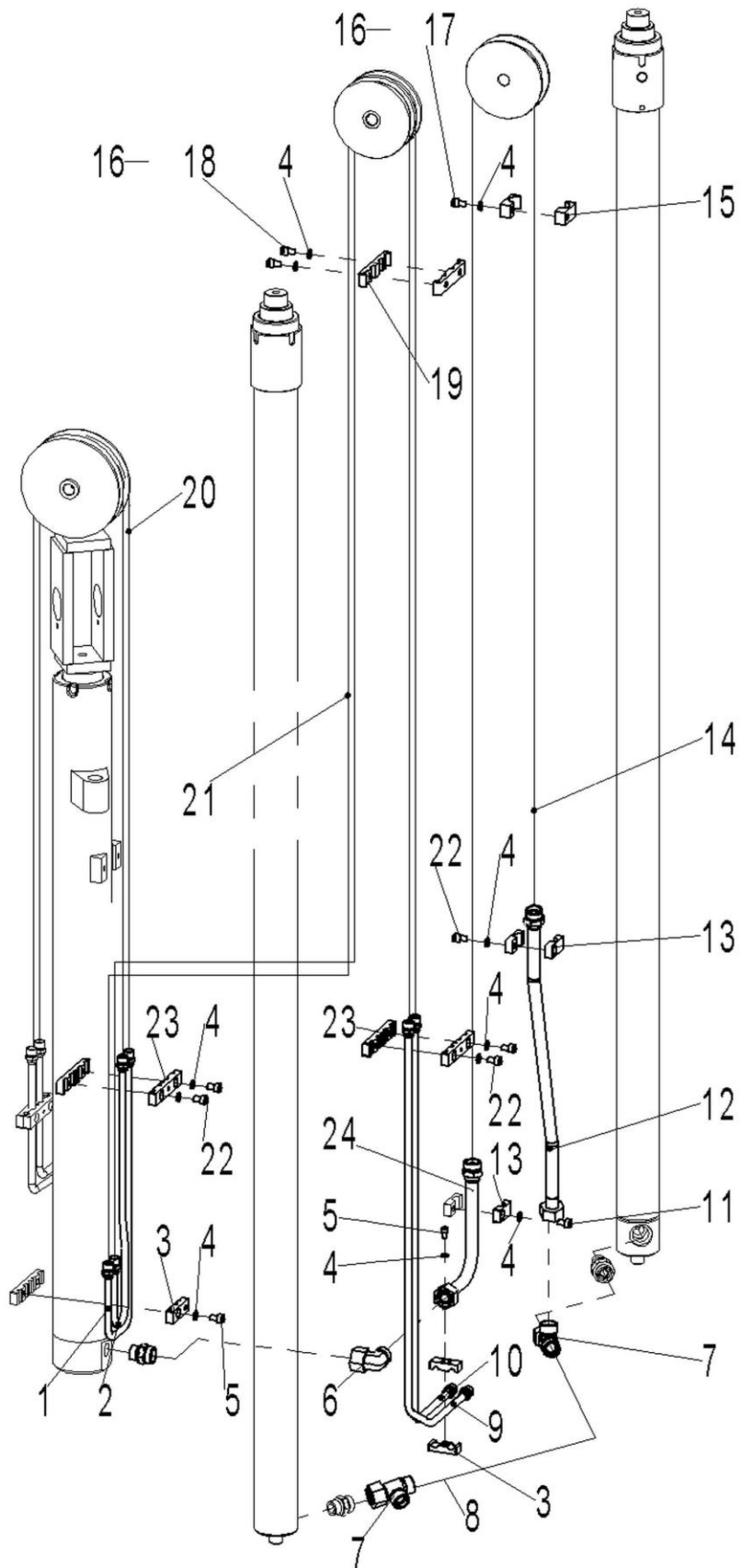


Fig. 21 Three Stage Mast (Hydraulic pipeline three ways)

No.	Art No.	Description	Qty.	Note
1	213044520104	Hydraulic pipe welding 3	1	
2	213044520105	Hydraulic pipe welding 4	1	
3	201044520027	Clip	5	2X10
4	910400500006	Spring Washer	10	GB93-8
5	910200200055	Screw	2	GB70.1-M8x16-8.8
6	950400200006	Joint	1	(steering) 18-2xM26x 1.5-24°
7	950401000004	Joint	2	(steering L) 18-3xM26x1.5-24°
8	212044520064	Hydraulic pipe assembly	1	(Straight) 18-L480-2 SC-24°
9	213044520102	Hydraulic pipe welding 1	1	213025020010
10	213044520103	Hydraulic pipe welding 2	1	213025020010
11	910200200055	Screw	1	GB70.1-M8x16-8.8
12	213044520216	Hydraulic pipe welding 1	1	
13	213044520110	Clip 18	2	
14	213044520129	Hydraulic pipe assembly (Straight) 18-L2740-2SC-24°	1	4500
	213044520130	Hydraulic pipe assembly (Straight) 18-L3080-2SC-24°		5000
	213044520131	Hydraulic pipe assembly (Straight) 18-L3280-2SC-24°		5300
	213044520132	Hydraulic pipe assembly (Straight) 18-L3400-2SC-24°		5500
	213044520133	Hydraulic pipe assembly (Straight) 18-L3600-2SC-24°		5800
	213044520134	Hydraulic pipe assembly (Straight) 18-L3740-2SC-24°		6000
	213044520135	Hydraulic pipe assembly (Straight) 18-L4080-2SC-24°		6500
	213044520136	Hydraulic pipe assembly (Straight) 18-L4400-2SC-24°		7000
	213044520137	Hydraulic pipe assembly (Straight) 18-L4740-2SC-24°		7500

	213044520138	Hydraulic pipe assembly (Straight)18-L5080-2SC-24°		8000
15	213044520111	Clip 26	2	
16	910400100006	Washer	4	GB97.1-8-200HV
17	910200200062	Screw	2	GB70.1-M8x45-8.8
18	910200200060	Screw	2	GB70.1-M8x35-8.8
19	213044520106	Clip 2X15	2	
20	213044520144	Hydraulic pipe assembly (Straight)10-L1630-1SC-24°	2	4500
	213044520145	Hydraulic pipe assembly (Straight)10-L1800-1SC-24°		5000
	213044520146	Hydraulic pipe assembly (Straight)10-L1900-1SC-24°		5300
	213044520147	Hydraulic pipe assembly (Straight)10-L1960-1SC-24°		5500
	213044520148	Hydraulic pipe assembly (Straight)10-L2060-1SC-24°		5800
	213044520149	Hydraulic pipe assembly (Straight)10-L2130-1SC-24°		6000
	213044520150	Hydraulic pipe assembly (Straight)10-L2300-1SC-24°		6500
	213044520151	Hydraulic pipe assembly (Straight)10-L2460-1SC-24°		7000
	213044520152	Hydraulic pipe assembly (Straight)10-L2630-1SC-24°		7500
	213044520153	Hydraulic pipe assembly (Straight)10-L2800-1SC-24°		8000
21	213044520114	Hydraulic pipe assembly (Straight)10-L2740-1SC-24°	2	4500
	213044520115	Hydraulic pipe assembly (Straight)10-L3080-1SC-24°		5000
	213044520116	Hydraulic pipe assembly (Straight)10-L3280-1SC-24°		5300
	213044520117	Hydraulic pipe assembly (Straight)10-L3400-1SC-24°		5500
	213044520118	Hydraulic pipe assembly (Straight)10-L3600-1SC-24°		5800
	213044520119	Hydraulic pipe assembly (Straight)10-L3740-1SC-24°		6000

	213044520120	Hydraulic pipe assembly (Straight)10-L4080-1SC-24°		6500
	213044520121	Hydraulic pipe assembly (Straight)10-L4400-1SC-24°		7000
	213044520122	Hydraulic pipe assembly (Straight)10-L4740-1SC-24°		7500
	213044520123	Hydraulic pipe assembly (Straight)10-L5080-1SC-24°		8000
22	910200200062	Screw	1	GB70.1-M8x45-8.8
23	201044520062	Clip	2	2X10, 1X8
24	212044520062	Hydraulic pipe welding 1	1	

Fig. 22 Three stage mast (hydraulic pipeline four ways)

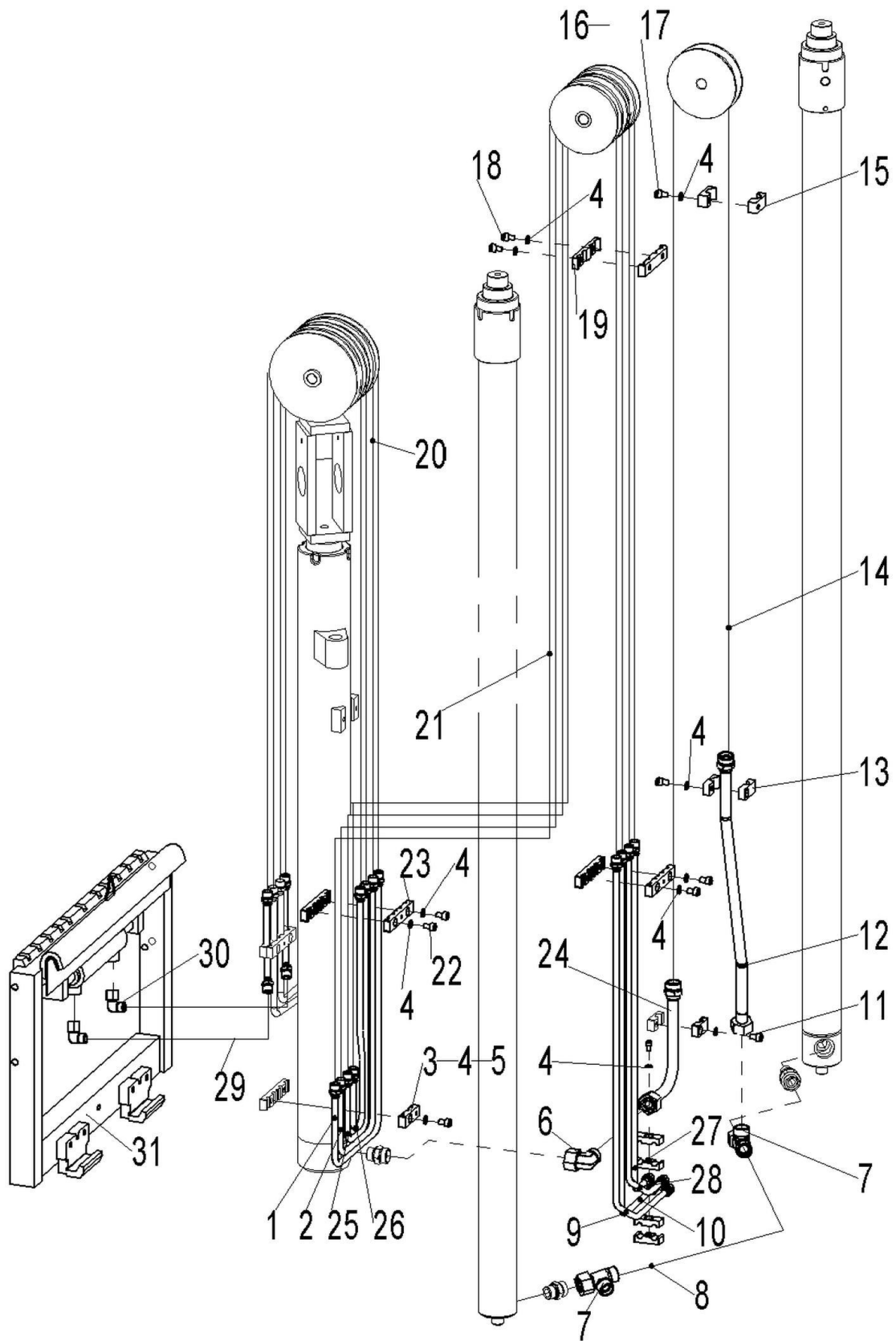


Fig. 22 Three Stage Mast (Hydraulic pipeline four ways)

No	Art No.	Description	Qty.	Note
1	213030520002	Hydraulic pipe welding 3	1	
2	213030520003	Hydraulic pipe welding 4	1	
3	201044520027	Clip	5	2X10
4	910400500006	Spring washer	10	GB93-8
5	910200200055	Screw	2	GB70.1-M8x16-8.8
6	950400200006	Joint	1	(steering)18-2xM26x1.5-24°
7	950401000004	Joint	2	(steering L)18-3xM26x1.5-24°
8	212044520064	Hydraulic pipe assembly	1	(Straight)18-L480-2SC-24°
9	213044520102	Hydraulic pipe welding 1	1	213025020010
10	213044520103	Hydraulic pipe welding 2	1	213025020010
11	910200200055	Screw	1	GB70.1-M8x16-8.8
12	213044520216	Hydraulic pipe welding 1	1	
13	213044520110	Clip 18	2	
14	213044520129	Hydraulic pipe assembly (Straight)18-L2740-2SC-2	1	4500
	213044520130	Hydraulic pipe assembly (Straight)18-L3080-2SC-2		5000
	213044520131	Hydraulic pipe assembly (Straight)18-L3280-2SC-2		5300
	213044520132	Hydraulic pipe assembly (Straight)18-L3400-2SC-2		5500
	213044520133	Hydraulic pipe assembly (Straight)18-L3600-2SC-2		5800
	213044520134	Hydraulic pipe assembly (Straight)18-L3740-2SC-2		6000
	213044520135	Hydraulic pipe assembly (Straight)18-L4080-2SC-2		6500
	213044520136	Hydraulic pipe assembly (Straight)18-L4400-2SC-2		7000

	213044520137	Hydraulic pipe assembly (Straight)18-L4740-2SC-2		7500
	213044520138	Hydraulic pipe assembly (Straight)18-L5080-2SC-2		8000
15	213044520111	Clip 26	2	
16	910400100006	Washer	4	GB97.1-8-200HV
17	910200200062	Screw	2	GB70.1-M8x45-8.8
18	910200200060	Screw	2	GB70.1-M8x35-8.8
19	213044520106	Clip 2X15	2	
20	213044520144	Hydraulic pipe assembly (Straight)10-L1630-1SC-2	4	4500
	213044520145	Hydraulic pipe assembly (Straight)10-L1800-1SC-2		5000
	213044520146	Hydraulic pipe assembly (Straight)10-L1900-1SC-2		5300
	213044520147	Hydraulic pipe assembly (Straight)10-L1960-1SC-2		5500
	213044520148	Hydraulic pipe assembly (Straight)10-L2060-1SC-2		5800
	213044520149	Hydraulic pipe assembly (Straight)10-L21301SC-2		6000
	213044520150	Hydraulic pipe assembly (Straight)10-L2300-1SC-2		6500
	213044520151	Hydraulic pipe assembly (Straight)10-L2460-1SC-2		7000
	213044520152	Hydraulic pipe assembly (Straight)10-L2630-1SC-2		7500
	213044520153	Hydraulic pipe assembly (Straight)10-L2800-1SC-2		8000
21	213044520114	Hydraulic pipe assembly (Straight)10-L2740-1SC-2	4	4500
	213044520115	Hydraulic pipe assembly (Straight)10-L3080-1SC-2		5000
	213044520116	Hydraulic pipe assembly (Straight)10-L3280-1SC-2		5300
	213044520117	Hydraulic pipe assembly (Straight)10-L3400-1SC-2		5500
	213044520118	Hydraulic pipe assembly (Straight)10-L3600-1SC-2		5800

	213044520119	Hydraulic pipe assembly (Straight)10-L3740-1SC-2		6000
	213044520120	Hydraulic pipe assembly (Straight)10-L4080-1SC-2		6500
	213044520121	Hydraulic pipe assembly (Straight)10-L4400-1SC-2		7000
	213044520122	Hydraulic pipe assembly (Straight)10-L4740-1SC-2		7500
	213044520123	Hydraulic pipe assembly (Straight)10-L5080-1SC-2		8000
22	910200200062	Screw	1	GB70.1-M8x45-8.8
23	201044520062	Clip	2	2X10,1 X8
24	212044520062	Hydraulic pipe welding 1	1	
25	213030520004	Hydraulic pipe welding 5	1	
26	213030520005	Hydraulic pipe welding 6	1	
27	213030520001	Hydraulic pipe welding 2	1	213025020010
28	213030520000	Hydraulic pipe welding 1	1	213025020010
29	201030520013	Hydraulic pipe assembly		(90°)10-L250-1SC-24°
30	950401100003	Joint	2	(Steering -0R)10-G1/4-M16x1.5-24°
31	940100200001	Side shifter	1	GC20NL

Fig. 23 Two stage mast (fork carriage components)

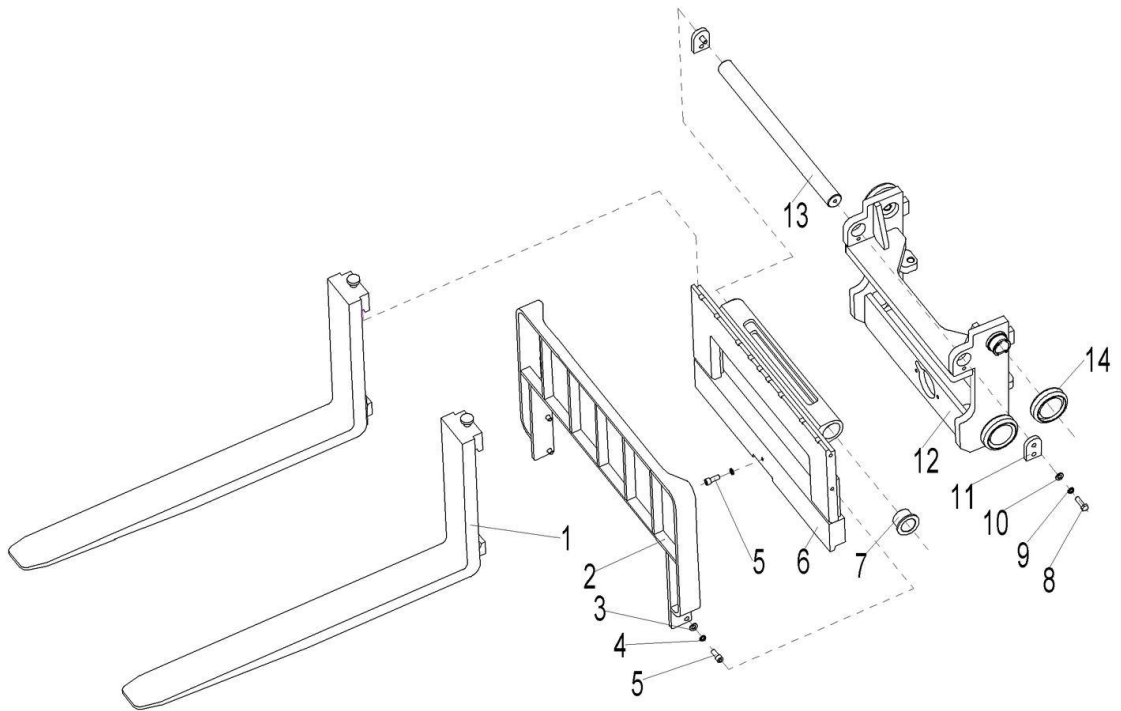


Fig. 23 Two Stage Mast (Fork Carriage Components)

No.	Art No.	Description	Qty.	Note
1	940100100008	Hook	2	II A fork 120x40x1070
	940100100009	Hook		II A fork 120x40x1220
	940100100011	Hook		II A fork 120x40x1370
	940100100012	Hook		II A fork 120x40x1520
2	216540510000	Load backrest welding (885)	1	
	216540510001	Load backrest welding (872)		Side shifter
3	910100300050	Bolt	5	GB5783-M12x30-8.8
4	910400500008	Spring washer	5	GB93-12
5	910400100008	Washer	4	GB97.1-12-200HV
6	213038010004	Fork carriage welding (two stage standard mast)	1	
7	940500400001	Bearing	2	45x55x40
8	910100300037	Bolt GB5783	4	
9	910400500007	Spring Washer GB93	4	
10	910400100007	Washer GB97.1	4	
11	213038020027	Baffle	2	
12	212038010020	Inner carriage welding	1	
13	213038020017	Axle 45x620	1	
14	940200300012	Compound roller	4	110-range=50-55

Fig. 24 Two stage mast (mast components)

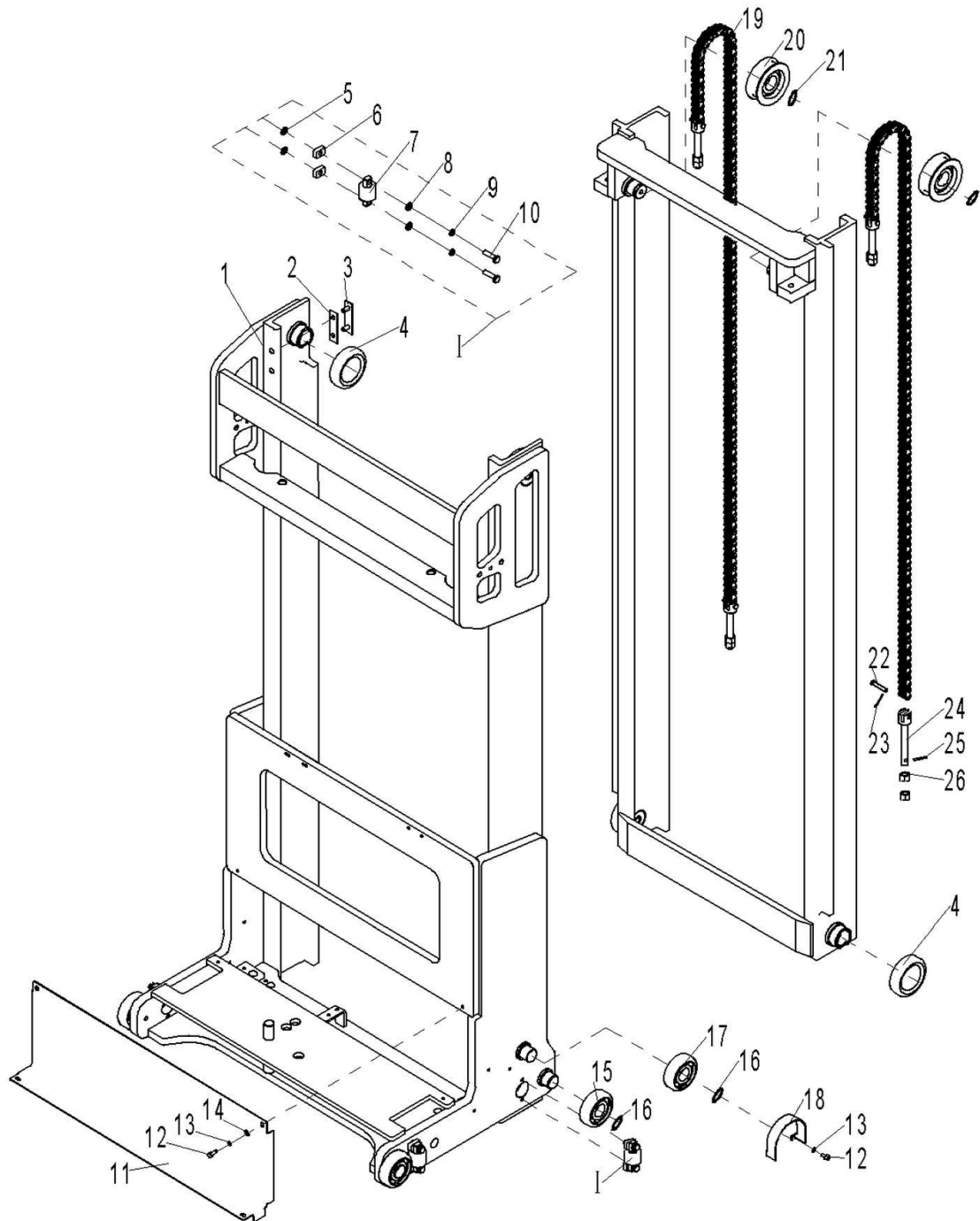


Fig. 24 Two Stage Mast (mast components)

No.	Art No.	Description	Qty.	Note
1	212044010020	Outer mast welding	2	Lifting 2500
	212044010021			Lifting 2700
	212044010022			Lifting 3000
	212044010023			Lifting 3300
	212044010024			Lifting 3600
	212044010025			Lifting 4000
	212044010026			Lifting 4500
2	253544002012	Washer	Several	
3	253544020100	Guiding plate	2	
4	940200300012	Compound roller	4	110-range=50-55
5	940600500020	Washer DIN988-20x10x0.5	Several	
	940600500018	Washer DIN988-20x10x0.3		
6	213044520318	Washer	8	t=10
	213044520319	Washer		t=12
7	940200200007	Side roller42-CD=60	4	
8	910400100007	Washer GB97.1-10-200HV	8	
9	910400500007	Spring washer GB93-10	8	
10	910100300039	Bolt GB5783-M10x40-8.8	8	
11	212044020200	Seal plate	1	
12	910400500006	Spring washer	12	GB93-8
13	910200200053	Screw	4	GB70.1-M8x12-8.8
14	910400100006	Washer GB97.1-8-200HV	6	
15	940200100006	Main roller92.4x35x28	4	

	940200100015	Main roller92.7x35x28		
16	910401300018	Circlip	6	GB894.1-35
17	940200100005	Main roller	2	88.4x35x28
	940200100013	Main roller		88.9x35x28
	940200100014	Main roller		89.4x35x28
18	213044520000	Protective cover (Main roller)	2	
19	212044010042	Lifting chain LH1244-93	2	Lifting 2500
	212044010043	Lifting chain LH1244-99		Lifting 2700
	212044010044	Lifting chain LH1244-107		Lifting 3000
	212044010045	Lifting chain LH1244-115		Lifting 3300
	212044010046	Lifting chain LH1244-123		Lifting 3600
	212044010047	Lifting chain LH1244-133		Lifting 4000
	212044010048	Lifting chain LH1244-145		Lifting 4500
20	940200500007	Bearing	2	HC235ZB-43501-100x40x31.3
21	910401300020	Circlip	2	GB894.1-40
22	213044520006	Axle	2	8x45
23	91060060001	Split pin	2	GB91-2x16
24	532644020096	Bar	2	M16x1.5-120(LH1244)
25	910600600024	Split pin	2	GB91-3.2x16
26	910300100010	Nut	4	GB6170-M16-10

Fig. 25 Two stage mast (hydraulic pipeline three ways)

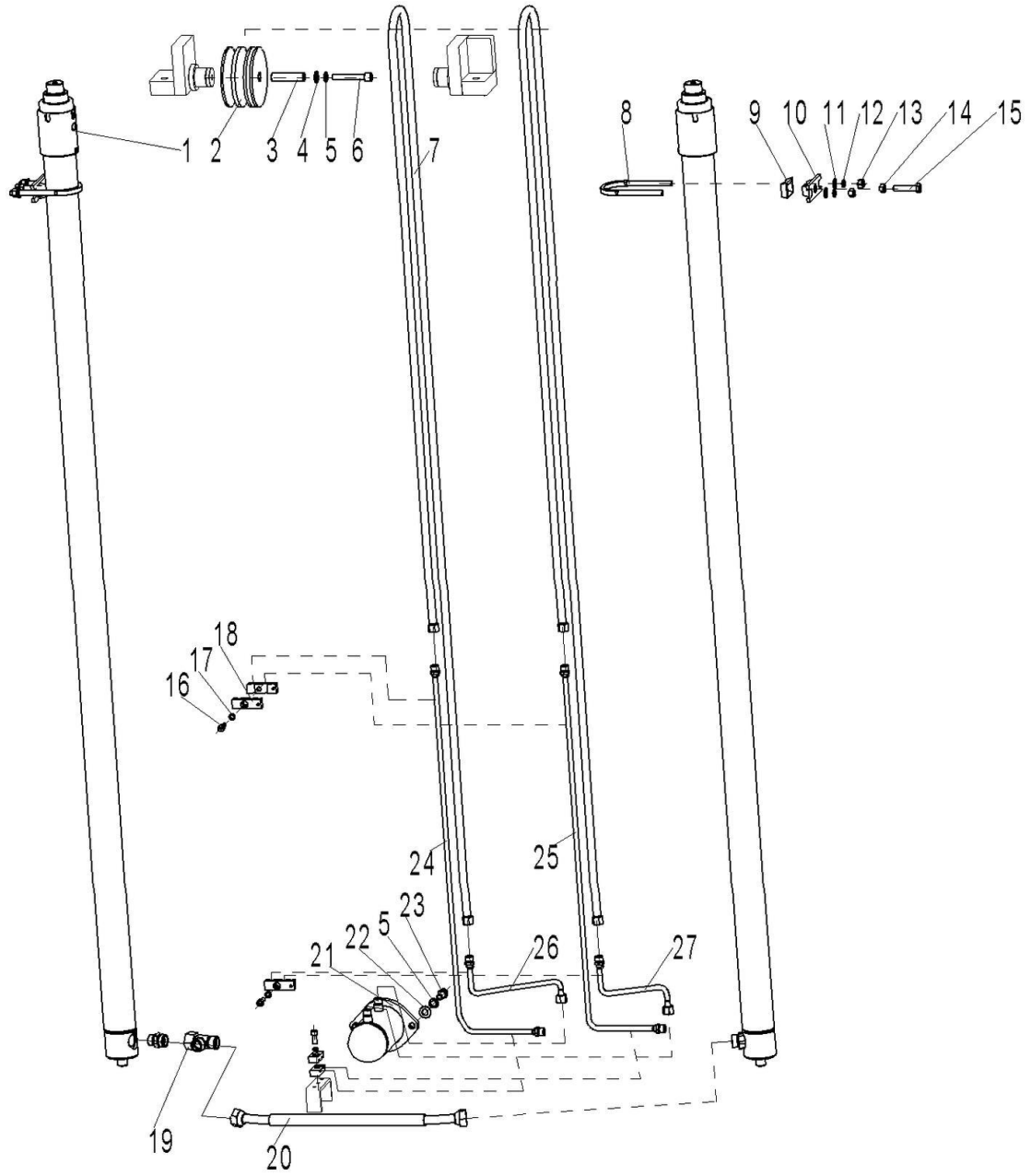


Fig. 25 Two Stage Mast (Hydraulic pipeline three ways)

No.	Art No.	Description	Qty.	Note
1	212044010035	Cylinder 50x40x1525	2	2500
	212044010036	Cylinder 50x40x1625		2700
	212044010037	Cylinder 50x40x1775		3000
	212044010038	Cylinder 50x40x1925		3300
	212044010039	Cylinder 50x40x2075		3600
	212044010040	Cylinder 50x40x2275		4000
	212044010041	Cylinder 50x40x2525		4500
2	213044520164	Pulley	1	110x66 (Double groove)
3	201044520039	Bushing	1	17x13x54
4	910400100010	Washer	1	GB97.1-16-200HV
5	910400500008	Spring washer	3	GB93-12
6	910100300057	Bolt	1	GB5783-M12x70-8.8
7	213044020020	Hydraulic pipe assembly (Straight)10-L2100-1SC-2	2	2500
	201043020015	Hydraulic pipe assembly (Straight)10-L2300-1SC-2		2700
	213044020021	Hydraulic pipe assembly (Straight)10-L2600-1SC-2		3000
	213044020022	Hydraulic pipe assembly (Straight)10-L2900-1SC-2		3300
	213044020023	Hydraulic pipe assembly (Straight)10-L3200-1SC-2		3600
	213044020024	Hydraulic pipe assembly (Straight)10-L3600-1SC-2		4000
	213044020025	Hydraulic pipe assembly (Straight)10-L4100-1SC-2		4500
8	253544020004	Fixing ring	2	
9	253544020005	Rubber bushing	2	
10	253544020006	Fixing base	2	

11	910400100007	Washer	4	GB97.1-10-200HV
12	910400500007	Spring washer	4	GB93-10
13	910300200002	Nut	4	GB6171-M10x1.25-10
14	910300100007	Nut	2	GB6170-M10-10
15	910100300041	Bolt	2	GB5783-M10x50-8.8
16	910200200058	Screw	4	GB70.1-M8x25-8.8
17	910400500006	Spring washer	4	GB93-8
18	201044520027	Clip	4	2x10
19	950401000004	Joint	1	(Steering L) 18-3xM26x1.5-24°
20	213044020045	Hydraulic pipe assembly	1	(Straight) 18-L520-2SC- 24%d
21	213020510000	Cylinder	1	(T) 75x40x35
22	910400100008	Washer	2	GB97.1-12-200HV
23	910100300051	Bolt	2	GB5783-M12x35-8.8
24	213044520102	Hydraulic pipe welding 1	1	
25	213044520103	Hydraulic pipe welding 2	1	
26	213030520001	Hydraulic pipe welding 2	1	
27	213044020017	Hydraulic pipe welding 1	1	

Fig. 26 Two stage mast (hydraulic pipeline four ways)

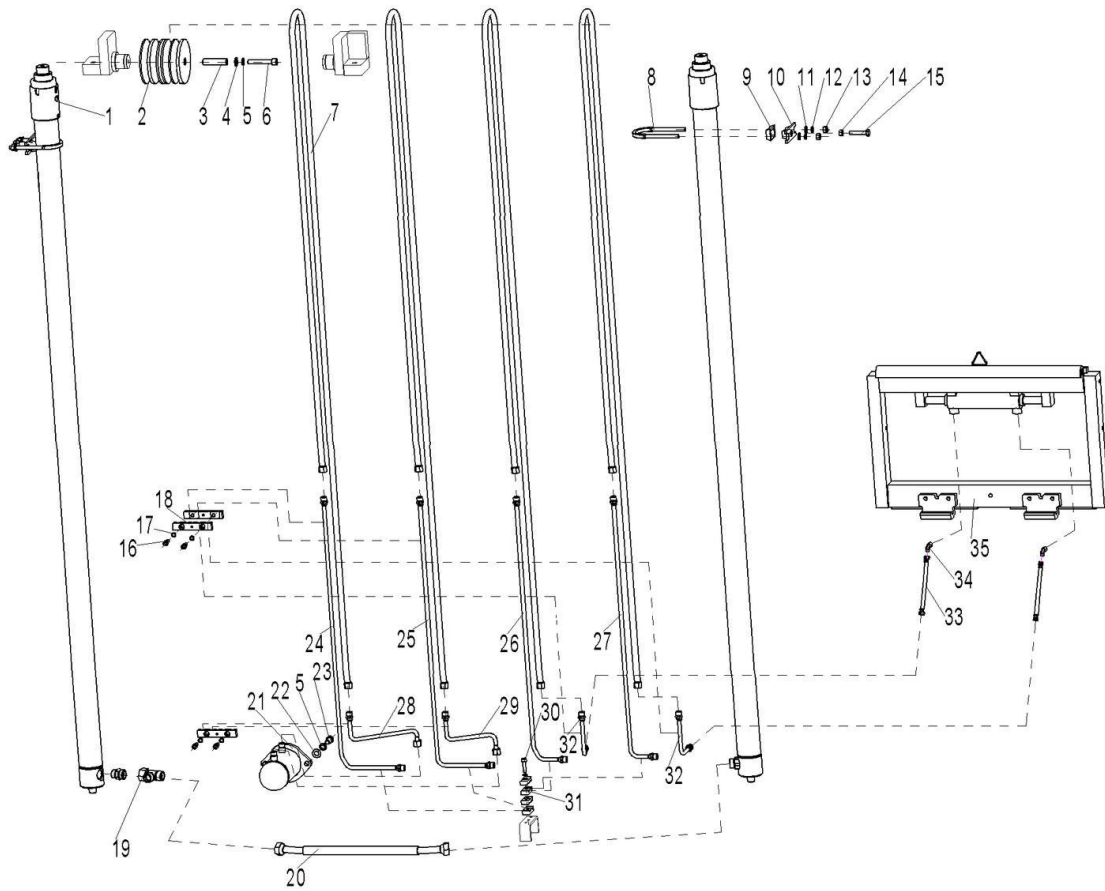


Fig. 26 Two Stage Mast (Hydraulic pipeline four ways)

No.	Art No.	Description	Qty.	Note
1	212044010035	Cylinder 50x40x1525	2	2500
	212044010036	Cylinder 50x40x1625		2700
	212044010037	Cylinder 50x40x1775		3000
	212044010038	Cylinder 50x40x1925		3300
	212044010039	Cylinder 50x40x2075		3600
	212044010040	Cylinder 50x40x2275		4000
	212044010041	Cylinder 50x40x2525		4500
2	213044520164	Pulley	1	110x66(Double groove)
3	201044520039	Bushing	1	17x13x54
4	910400100010	Washer	1	GB97.1-16-200HV
5	910400500008	Spring washer	3	GB93-12
6	910100300057	Bolt	1	GB5783-M12x70-8.8
7	213044020020	Hydraulic pipe assembly (Straight)10-L2100-1SC-24	4	2500
	201043020015	Hydraulic pipe assembly (Straight)10-L2300-1SC-24		2700
	213044020021	Hydraulic pipe assembly (Straight)10-L2600-1SC-24		3000
	213044020022	Hydraulic pipe assembly (Straight)10-L2900-1SC-24		3300
	213044020023	Hydraulic pipe assembly (Straight)10-L3200-1SC-24		3600
	213044020024	Hydraulic pipe assembly (Straight)10-L3600-1SC-24		4000
	213044020025	Hydraulic pipe assembly (Straight)10-L4100-1SC-24		4500
8	253544020004	Fixing ring	2	
9	253544020005	Rubber bushing	2	
10	253544020006	Fixing base	2	

11	910400100007	Washer	4	GB97.1-10-200HV
12	910400500007	Spring washer	4	GB93-10
13	910300200002	Nut	4	GB6171-M10x1.25-10
14	910300100007	Nut	2	GB6170-M10-10
15	910100300041	Bolt	2	GB5783-M10x50-8.8
16	910200200058	Screw	4	GB70.1-M8x25-8.8
17	910400500006	Spring washer	4	GB93-8
18	201044520027	Clip	4	2x10
19	950401000004	Joint	1	(Steering L)18-3xM26x1.5-24°
20	213044020045	Hydraulic pipe assembly	1	(Straight)18-L520-2SC-24 %d
21	213020510000	Cylinder	1	(T)75x40x35
22	910400100008	Washer	2	GB97.1-12-200HV
23	910100300051	Bolt	2	GB5783-M12x35-8.8
24	213044520102	Hydraulic pipe welding 1	1	
25	213044520103	Hydraulic pipe welding 2	1	
26	213030520000	Hydraulic pipe welding 1	1	
27	213030520001	Hydraulic pipe welding 2	1	
28	213044020017	Hydraulic pipe welding 1	1	
29	213044020018	Hydraulic pipe welding 2	2	
30	910200200063	Screw	1	GB70.1-M8x50-8.8
31	201044520027	Clip	4	2x10
32	201027520000	Hydraulic pipe welding 5	2	
33	201027520002	Hydraulic pipe assembly	2	(90%d)10-L300-1SC-24°
34	950401100003	Joint	2	(steering -0R)10-G1/4-M16x1.5-24°
35	940100200001	Side shifter	1	GC20NL

Fig. 27 Electric controller components

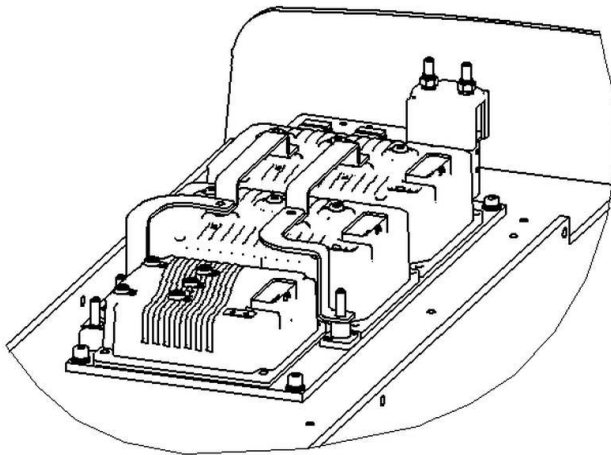
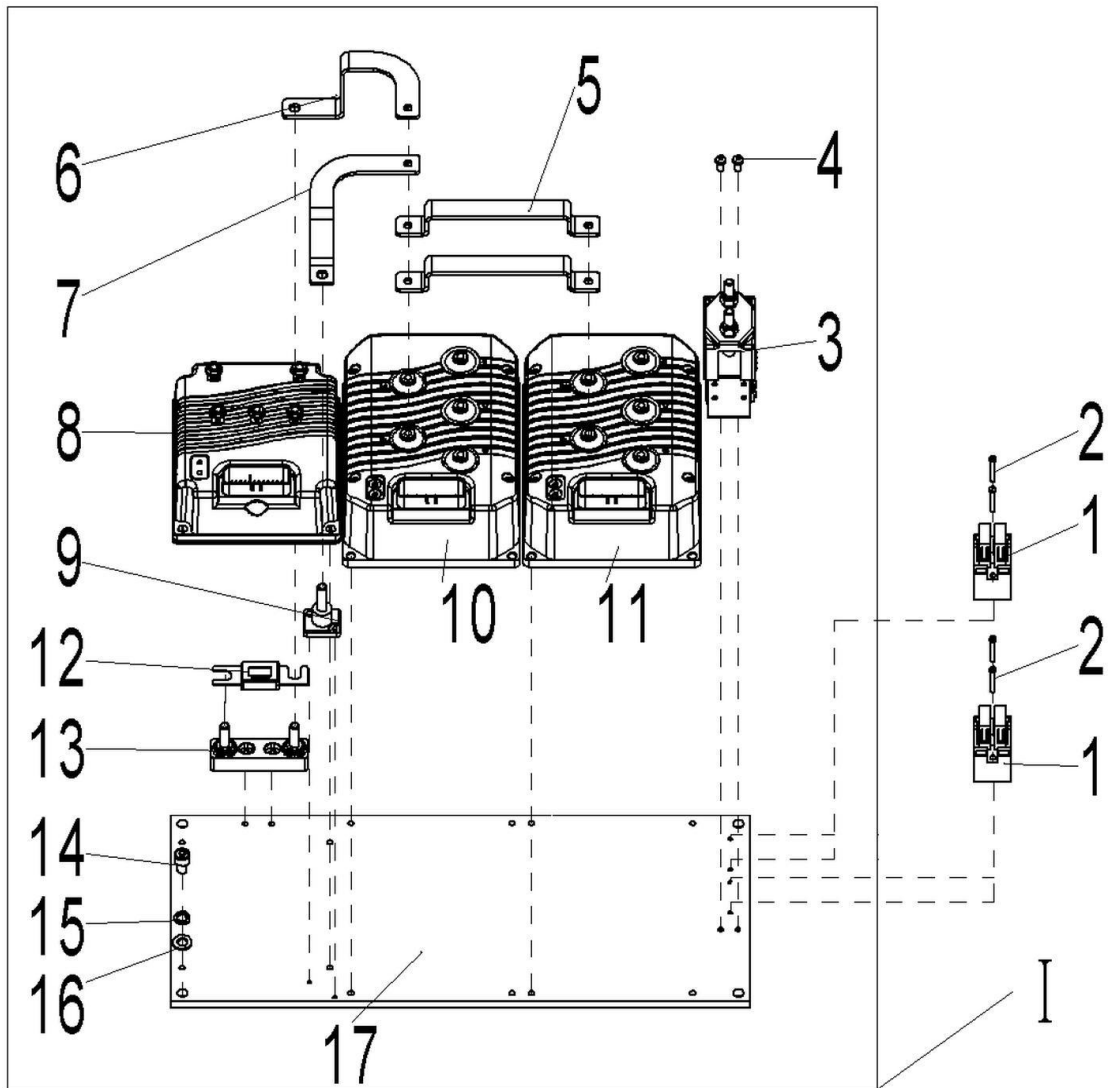


Fig. 27 Electric Controller Components

No.	Art No.	Description	Qty.	Note
1	920100400004	Fuse seat BD-2x10A	2	
2	910200500028	Screw GB818-M4x30-4.8	4	
3	920700100008	Contactor DC48V-SW180B-108	1	
4	910200500023	ScrewGB818-M4x8-4.8	2	
5	213098520001	Copper bar 一	2	
6	213098520002	Copper bar 二	1	
7	213098520003	Copper bar 三	1	
8	921400100004	Controller 1222-5101	1	
9	920100400001	Fuse seat M8	1	
10	921400100008	Controller 1234E-5321	1	
11	921400100008	Controller 1234E-5321	1	
12	920100100013	Fuse 350A(plastic)	1	
13	920100400002	Fuse seat SYY	1	
14	910200200055	Screw GB70.1-M8x16-8.8	4	
15	910400500006	Spring washer GB93-8	4	
16	910400100006	Washer GB97.1-8-200HV	4	
17	213098520004	Aluminum	1	
I	213033010016	Electric controller components	1	(1234E+1234E+EPS122 2)

Fig. 28 Cables

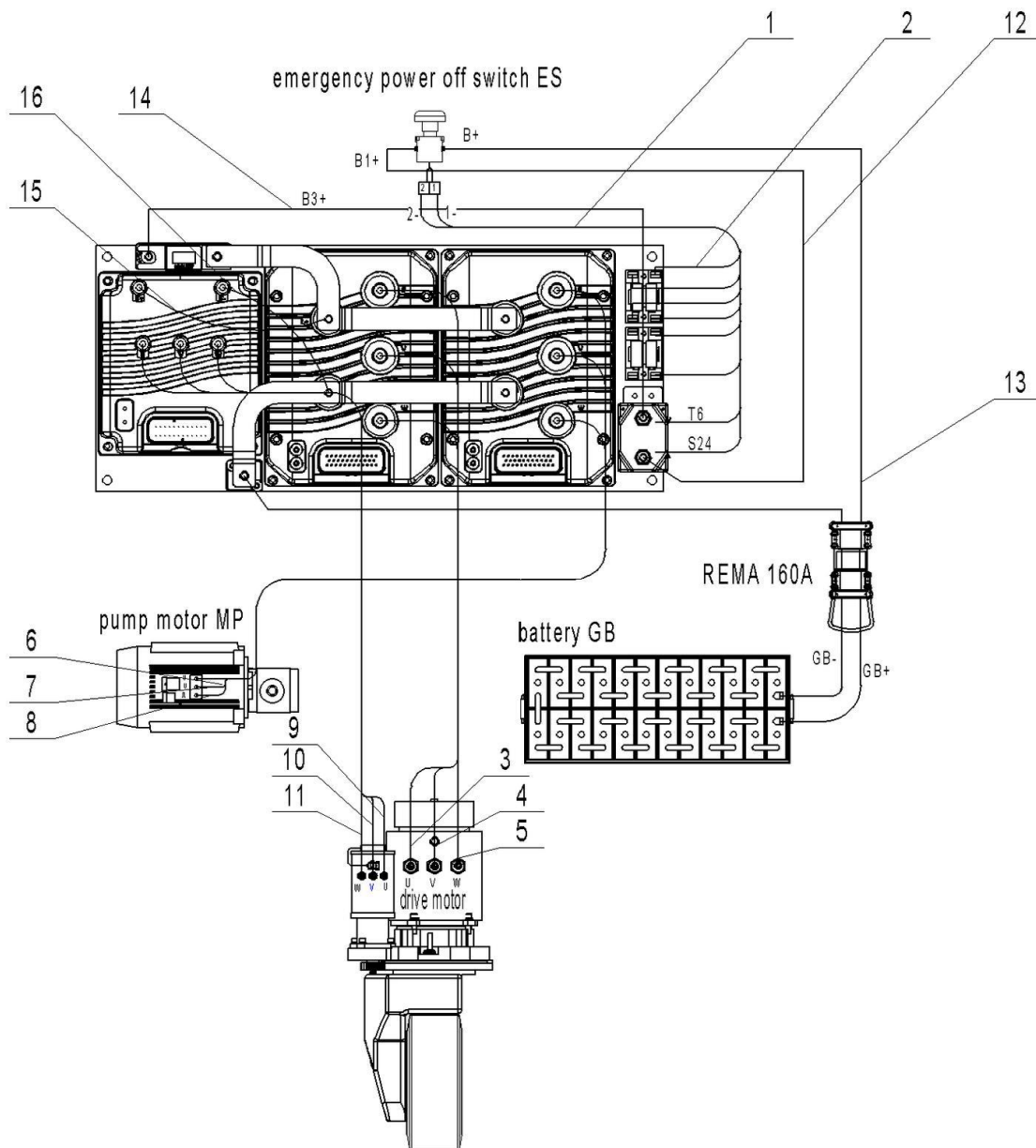


Fig. 28 Cables

No.	Art No.	Description	Qty.	Note
1	213033010020	Main control cables	1	(1234E+1234E+EPS1222)
2	213033010022	Safety switch cables	1	
3	213033010004	Cables	1	UT-35-6-8-1850
4	213033010005	Cables	1	VT-35-6-8-1750
5	213033010006	Cables	1	WT-35-6-8-1650
6	213033010007	Cables	1	UP-35-6-8-1250
7	213033010008	Cables	1	VP-35-6-8-1200
8	213033010009	Cables	1	WP-35-6-8-1150
9	213033010010	Cables	1	US-6-5-6-2000
10	213033010011	Cables	1	VS-6-5-6-2000
11	213033010012	Cables	1	WS-6-5-6-2000
12	213033010025	Cables	1	B1+-50-8-8-730
13	213033010024	Main power supply cable	1	
14	213033010026	Cables	1	B3+-50-8-8-650
15	213033010018	Cables	1	B6+-6-6-6-200
16	213033010019	Cables	1	B3--6-6-6-150

Fig. 29 Tilt cylinder

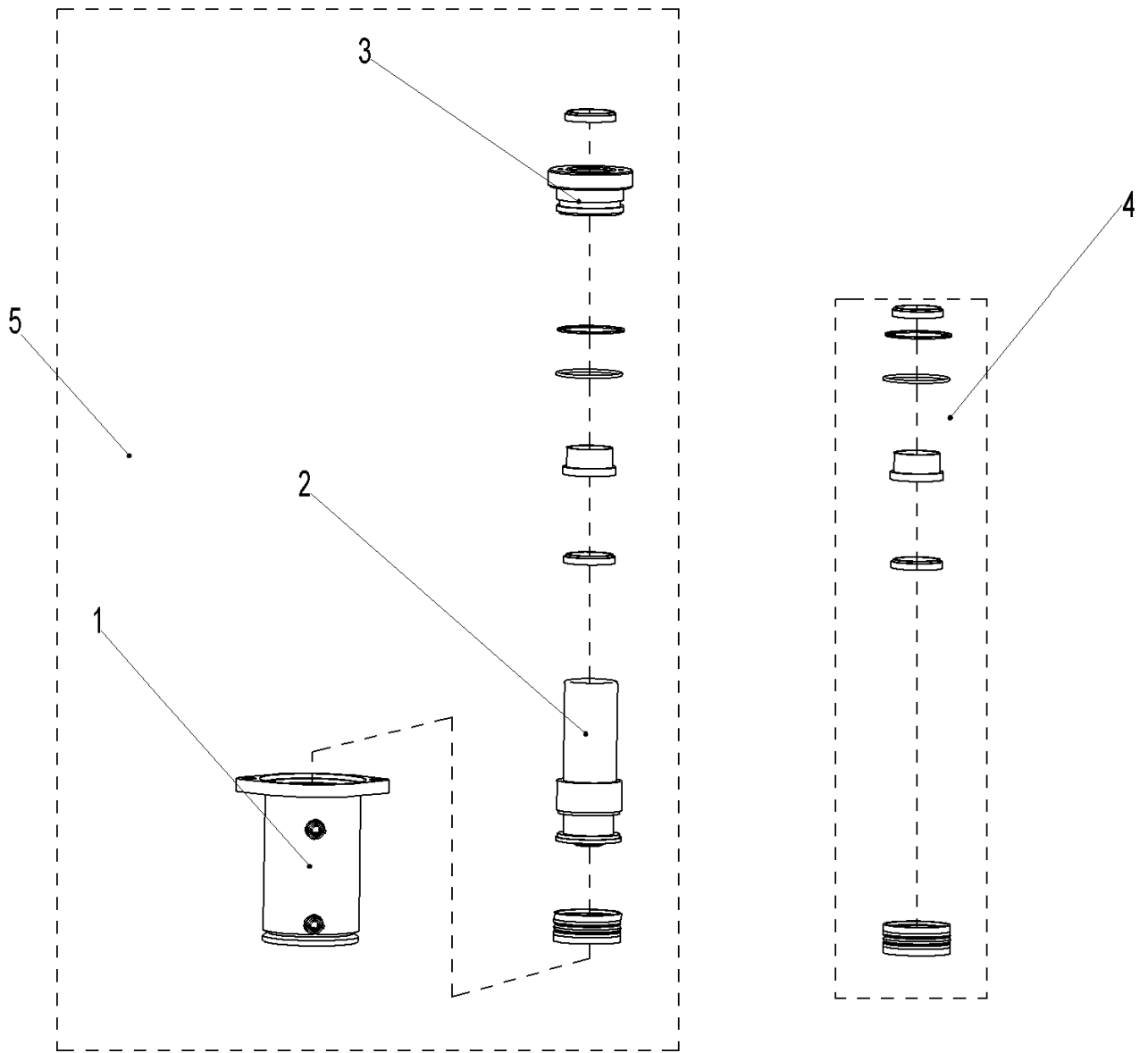


Fig. 29 Tilt Cylinder

No.	Art No.	Description	Qty.	Note
1	201598520011	Tube	1	
2	201598520012	Piston rod	1	
3	201598520013	Guide bushing	1	
4	201598510004	Tilt cylinder sealing kits assembly	1	
5	201520510000	Tilt cylinder assembly	1	

Fig. 30 Cylinder (M) (three stage mast)

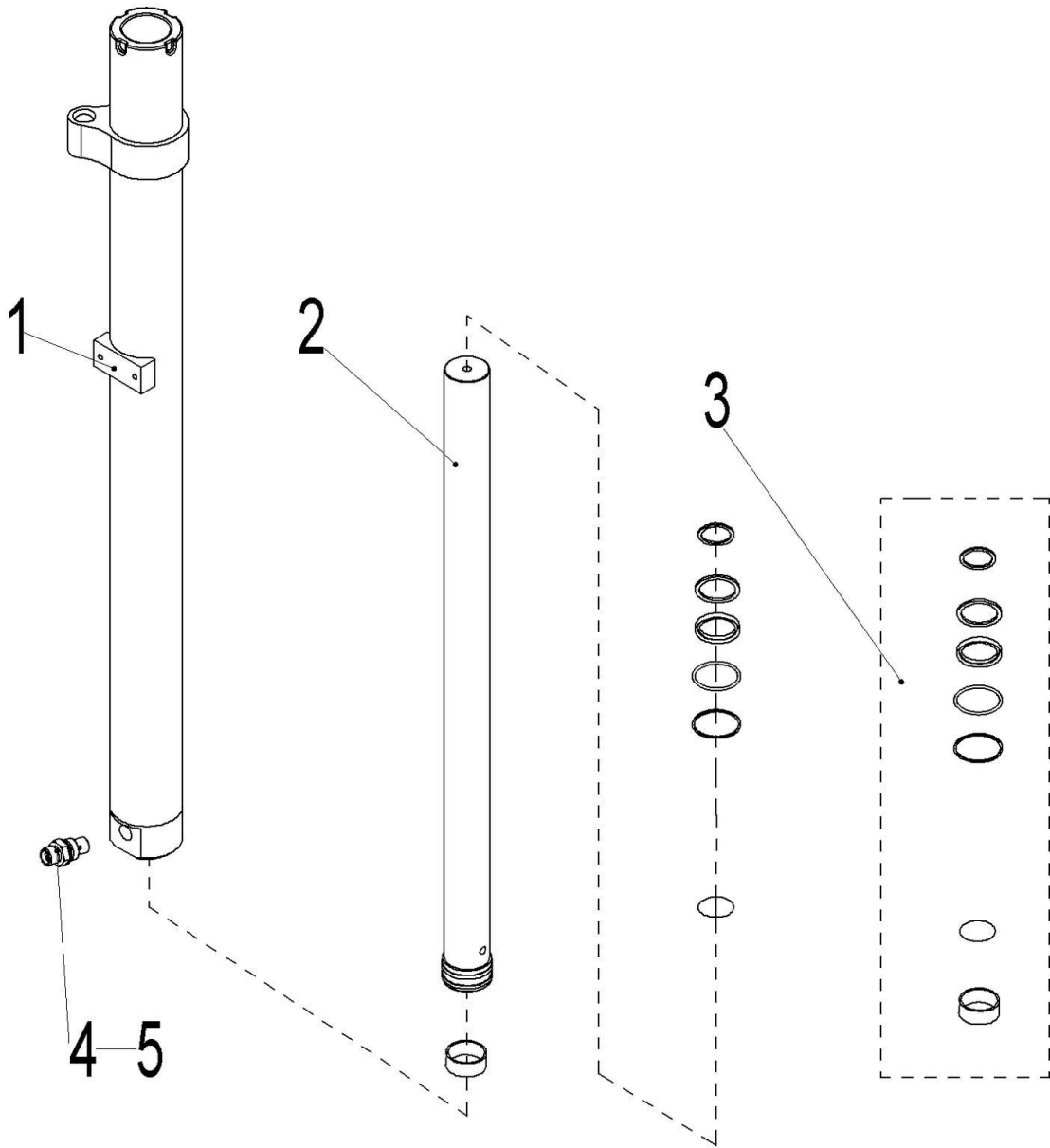


Fig. 30 Cylinder (M) (three stage mast)

No.	Art No.	Description	Qty.	Note
1	212098520201	Tube	1	4500
	212098520202			5000
	212098520203			5300
	212098520204			5500
	212098520205			5800
	212098520206			6000
	212098520207			6500
	212098520208			7000
	212098520209			7500
	212098520210			8000
2	212098520211	Piston rod	2	4500
	212098520212			5000
	212098520213			5300
	212098520214			5500
	212098520215			5800
	212098520216			6000
	212098520217			6500
	212098520218			7000
	212098520219			7500
	212098520220			8000
3	212098510021	Sealing pad assembly	1	
4	213098520230	Safety valve	1	
5	213098520231	O ring 19x2.65	1	

Fig. 31 Cylinder (three stage mast)

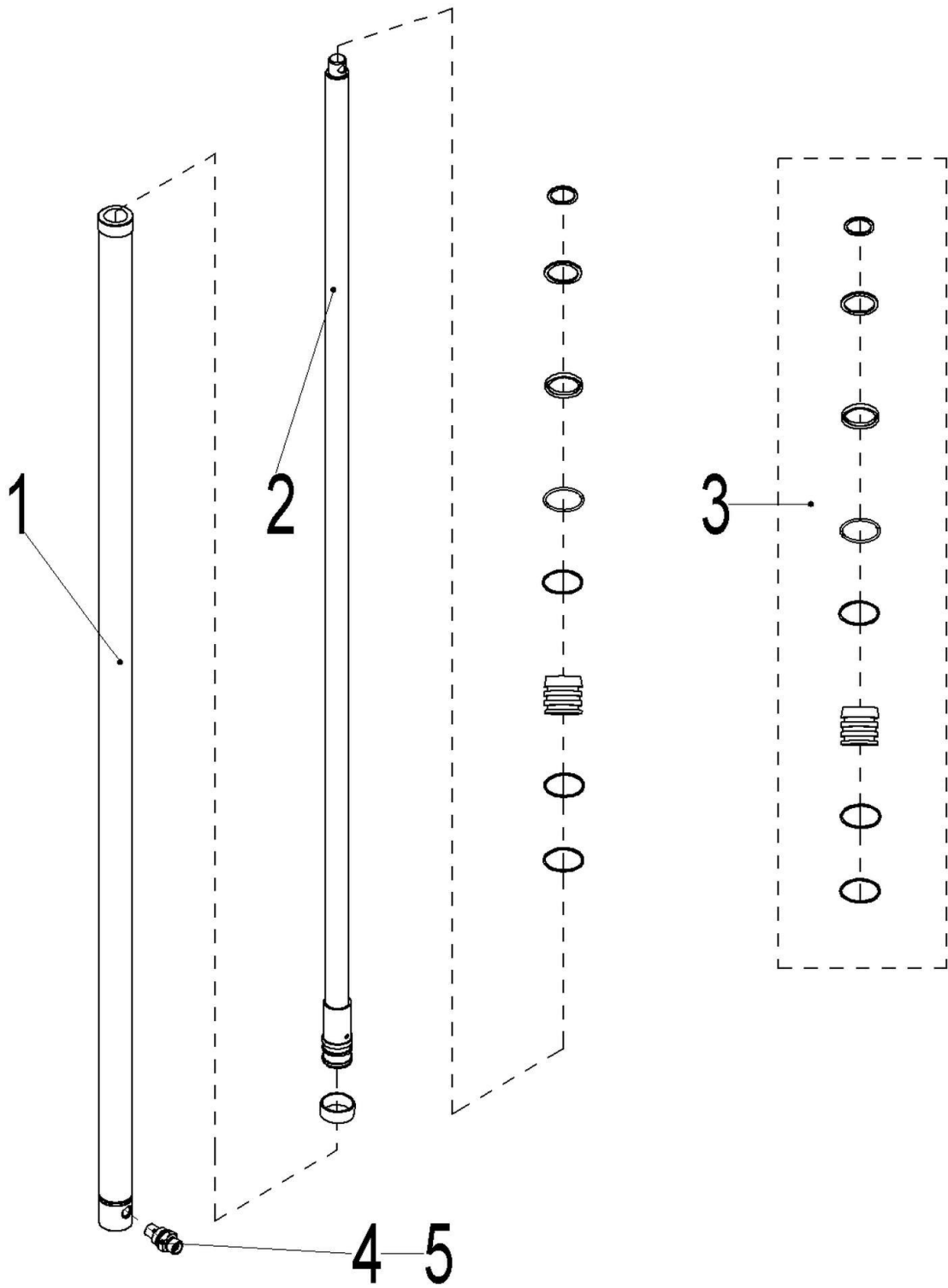


Fig. 31 Cylinder (three stage mast)

No.	Art No.	Description	Qty.	Note
1	212098520221	Tube	1	4500
	212098520222			5000
	212098520223			5300
	212098520224			5500
	212098520225			5800
	212098520226			6000
	212098520227			6500
	212098520228			7000
	212098520229			7500
	212098520230			8000
2	212098520231	Piston rod	1	4500
	212098520232			5000
	212098520233			5300
	212098520234			5500
	212098520235			5800
	212098520236			6000
	212098520237			6500
	212098520238			7000
	212098520239			7500
	212098520240			8000
3	213098510031	Sealing pad assembly	1	
4	213098520262	Safety valve	1	
5	213098520263	O ring 18x2.65	1	

Fig. 32 Cylinder (two stage mast)

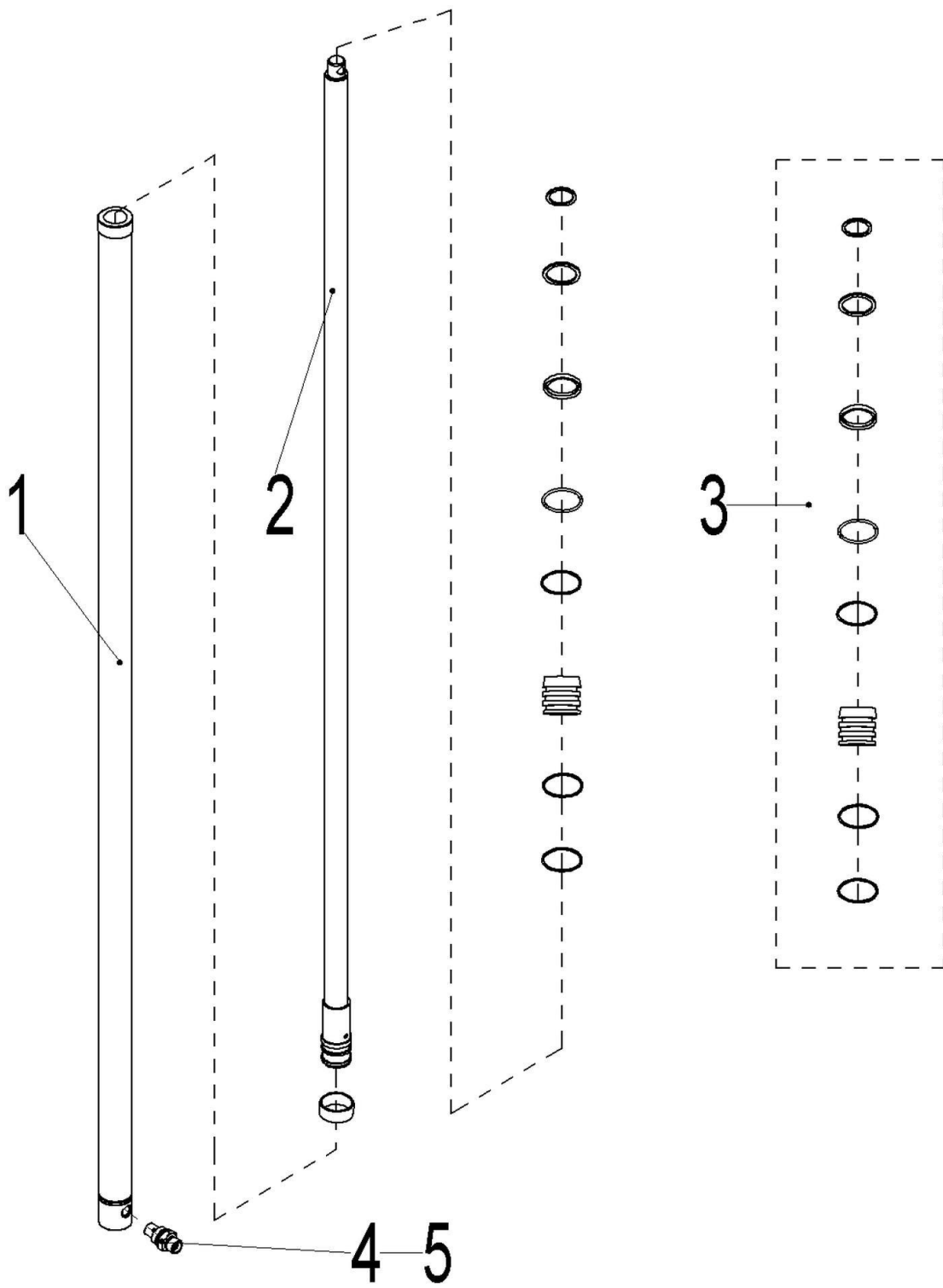


Fig. 32 Cylinder (two stage mast)

No.	Art No.	Description	Qty.	Note
1	213098520264	Tube	1	2500
	213098520265			2700
	213098520266			3000
	213098520267			3300
	213098520268			3600
	213098520269			4000
	213098520270			4500
2	213098520271	Piston rod	1	2500
	213098520272			2700
	213098520273			3000
	213098520274			3300
	213098520275			3600
	213098520276			4000
	213098520277			4500
3	213098510033	Sealing pad assembly	1	
4	213098520278	Safety valve	1	
5	213098520263	O ring 18x2.65	1	

Fig. 33 Reach forward cylinder

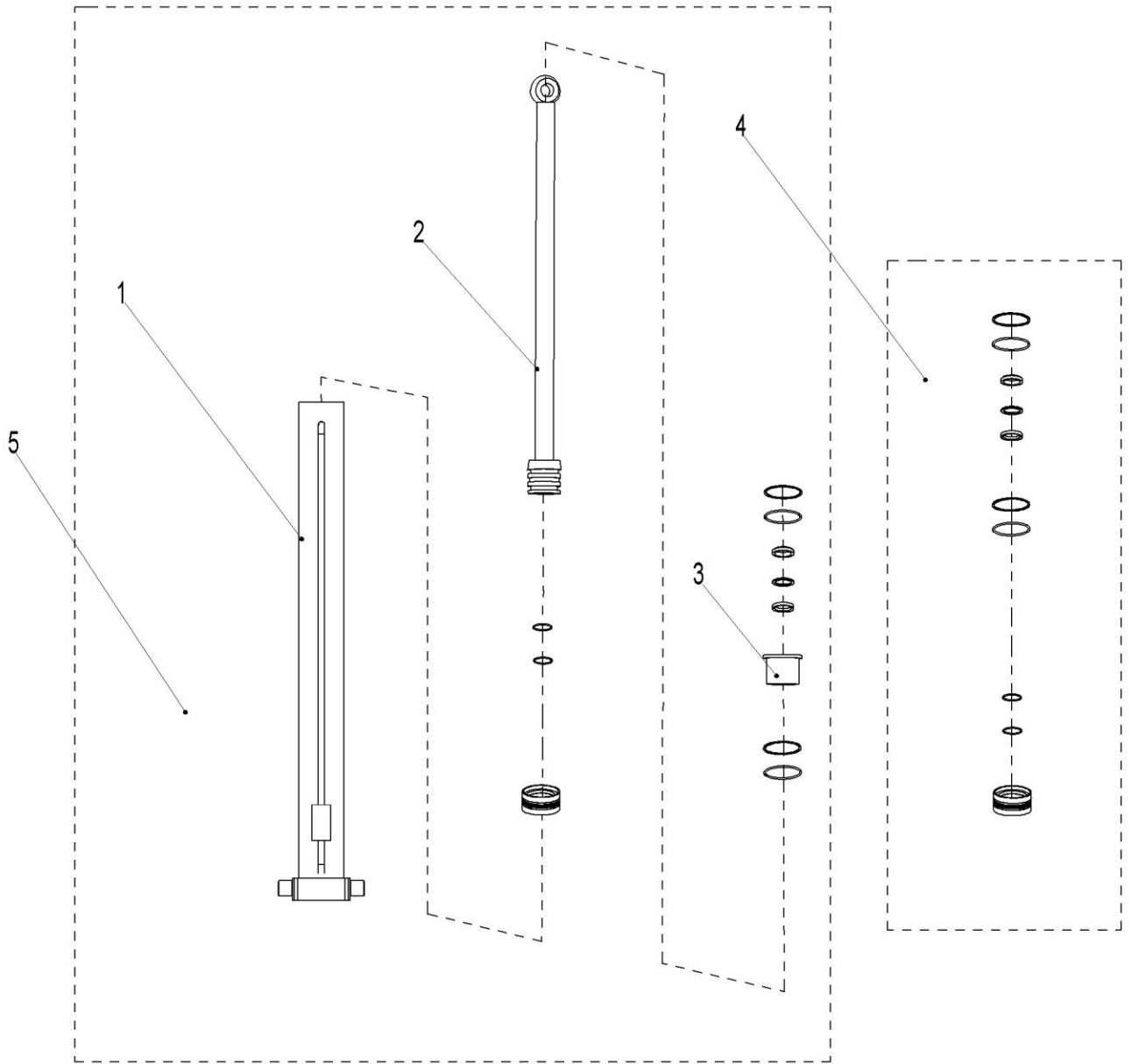


Fig. 33 Reach Forward Cylinder

No.	Art No.	Description	Qty.	Note
1	212098520241	Tube 574	1	RT16N two stage mast
	212098520242	Tube 592		RT16N three stage mast
	212098520243	Tube 544		RT14N two stage mast
	212098520244	Tube 567		RT14N three stage mast
2	212098520245	Reach forward cylinder Piston rod 574	1	RT16N two stage mast
	212098520246	Reach forward cylinder Piston rod 592		RT16N three stage mast
	212098520247	Reach forward cylinder Piston rod 544		RT14N two stage mast
	212098520248	Reach forward cylinder Piston rod 567		RT14N three stage mast
3	213098520032	Reach forward cylinder cap	1	
4	213098520033	Reach forward cylinder sealing kits assembly	1	
5	212020010020	Cylinder (Q)63x28x574	1	RT16N two stage mast
	212020010021	Cylinder (Q)63x28x592		RT16N three stage mast
	211020010021	Cylinder (Q)63x28x544		RT14N two stage mast
	211020010020	Cylinder (Q)63x28x567		RT14N three stage mast

Fig. 34 Driving/Lifting motor components

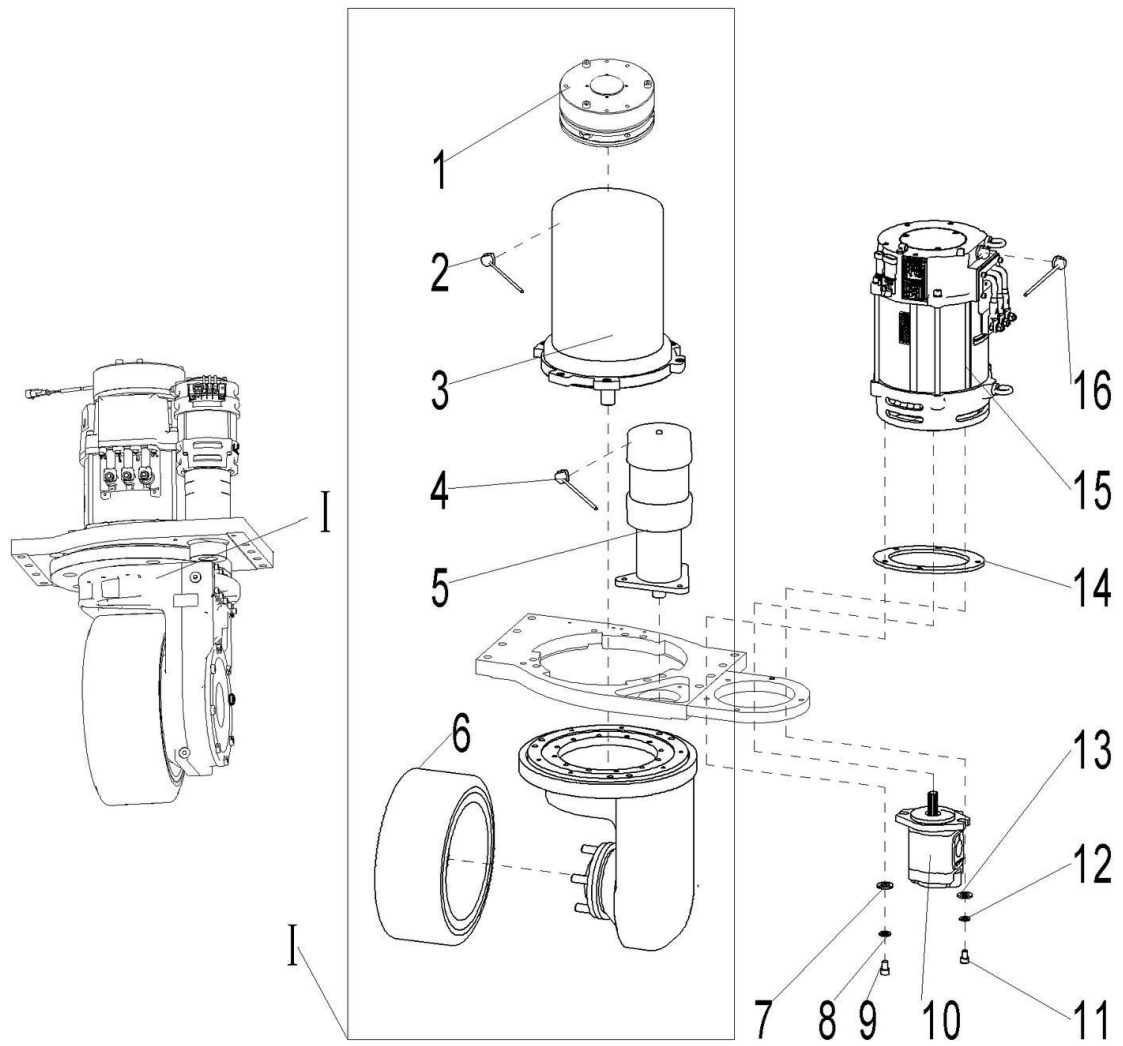


Fig. 34 Driving/Lifting motor components

No.	Art No.	Description	Qty.	Note
1	940700100003	Electromagnetic brake	1	BFK457-14-42v6 0N
2	921800200011	Encoder 50086968	1	Driving motor
3	920900100067	Motor(AC)TSA200-140-230	1	1755r/min
4	921800200012	Encoder 50087121	1	Steering motor
5	940900800001	AC steering assembly	1	TB10-106-AC-0.67K W
6	940300400011	Driving wheel		343x140-5710.45 10.02
7	910400100006	Washer GB97.1-8-200HV	5	
8	910400500006	Spring washer GB93-8	5	
9	910200200060	ScrewGB70.1-M8X35-8.8	5	
10	251023510004	Gear pump DSG05C16F9H1-R016C	1	
11	910100300036	Bolt GB5783-M10X25-8.8	2	
12	910400500007	Spring washer GB93-10	2	
13	910400100007	Washer GB97.1-10-200HV	2	
14	213032520000	Damping pad	1	
15	920900100027	Motor(AC)YDB12.5-4-6191	1	
16	921800200013	Encoder 5SD.4.21.058	1	
I	940900600009	Driving steering assembly	1	4633.604.101-AC-6.4 KW

Easy worn parts list

No.	Art No.	Description	Qty.	Fig./Position
1	212012520203	Sleeve 30x9x25	2	Fig. 6/7
2	212012520200	Sleeve 30x9x20	2	Fig. 6/7
3	940500100012	Bushing	1	Fig. 6/13
4	213012520014	L wear out plate	4	Fig. 6/22
5	910700200026	Bearing	2	Fig. 7/2
6	940300300016	Roller	1	Fig. 7/3
7	213019020009	Pad I	2	Fig. 9/5
8	251019020005	Sealing pad	2	Fig. 9/6
9	212021520203	Straight guiderail	2	Fig. 11/29
10	940500200006	Bushing with shoulder	2	Fig. 12/1
11	940500100007	Bushing	3	Fig. 14/18
12	940200100008	Main roller		Fig. 15/18
13	940200100016	Main roller		Fig. 15/18
14	940200100017	Main roller		Fig. 15/18
15	940200200008	Side roller34-CD=45	4	Fig. 16/8
16	940600500020	Washer DIN988-20x10x0.5	8	Fig. 17/3
17	940600500018	Washer DIN988-20x10x0.3		Fig. 17/3
18	213038020017	Axle 45x620	1	Fig. 17/23
19	940500400001	Bearing	2	Fig. 17/24
20	910700200019	Bearing	1	Fig. 17/25
21	213044520316	Washer	4	Fig. 18/19

22	213044520317	Washer	4	Fig. 18/19
23	940600500020	Washer DIN988-20x10x0.5	12	Fig. 18/20
24	940600500018	Washer DIN988-20x10x0.3	12	Fig. 18/20
25	940200100014	Main roller	2	Fig. 18/21
26	940200100013	Main roller	2	Fig. 18/21
27	940200100015	Main roller	2	Fig. 18/21
28	940200100006	Main roller92.4x35x28	4	Fig. 18/25
29	940200100015	Main roller92.7x35x28	4	Fig. 18/25
30	940200100008	Main roller77.7x35x22.5	2	Fig. 18/26
31	940200100008	Main roller	2	Fig. 18/34
32	940200100016	Main roller	2	Fig. 18/34
33	940200100017	Main roller	2	Fig. 18/34
34	940200100008	Main roller	4	Fig. 19/1
35	940200100016	Main roller	4	Fig. 19/1
36	940200100017	Main roller	4	Fig. 19/1
37	940200200008	Side roller34-CD=45	4	Fig. 19/6
38	940600500020	Washer DIN988-20x10x0.5	8	Fig. 19/7
39	940600500018	Washer DIN988-20x10x0.3	8	Fig. 19/7
40	940200500007	Bearing	2	Fig. 19/14
41	213044520164	Pulley 110x65(Double groove)	1	Fig. 19/15
42	213044520164	Pulley 110x65(Double groove)	2	Fig. 19/15
43	201044520039	Bushing 17x13x54	1	Fig. 19/16
44	201030520009	Bushing 17x13x122	1	Fig. 19/16

45	213044520006	Axle	2	Fig. 19/19
46	201598510004	Tilt cylinder sealing kits assembly	1	
47	212098510021	Sealing pad assembly	1	
48	213098510031	Sealing pad assembly	1	
49	213098510033	Sealing pad assembly	1	
50	213098520033	Reach forward cylinder sealing kits assembly	1	