

# PSE12BD / 12ND

## The EDGE Smart Design Pallet Stackers



**PSE12N DL**  
1.2T Capacity

**Li-ion**

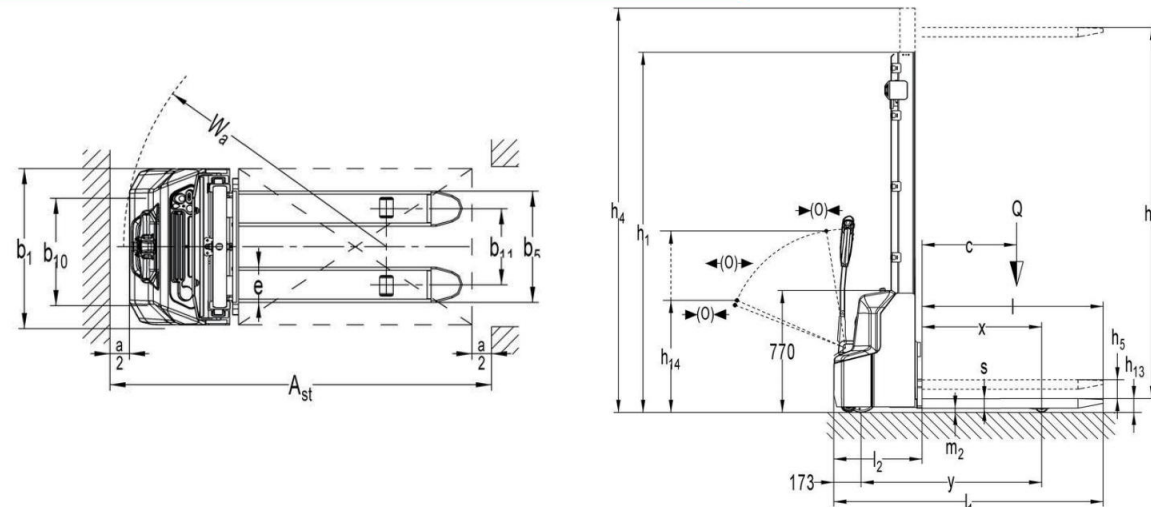
Perfect for light-duty applications.  
Compact & light service weight  
High maneuverability  
Fast-charging Li-ion batteries.  
Integrated on-board 25A charger  
Ideal for use on mezzanines  
Ultimate solution for light duty operations



**PSE12B**  
1.2T Capacity

**AGM**

Perfect for light-duty applications.  
Compact & light service weight.  
High maneuverability.  
Maintenance-free Lead-acid Battery.  
Integrated on-board 12A charger.  
Ideal for use on mezzanines.



### Type sheet for industrial truck acc. to VDI 2198 1KG=2.2LB 1INCH=25.4MM

			PSE12BD	PSE12ND	
1.2	Manufacturer's type designation		3600	PSE12ND	
1.3	Power (battery ,diesel, petrol, gas, manual)		Battery		
1.4	Operator type		Pedestrian		
1.5	Load Capacity / rated load	Q (t)	1.3 <sup>3)</sup>		
	Load Capacity / rated load (mast lift)	Q (t)	1.2		
	Load Capacity / rated load (support arm lift)	Q (t)	1.2		
1.6	Load centre distance	c (mm)	600		
1.8	Load distance ,centre of drive axle to fork	x (mm)	835 / 752 <sup>4)</sup>		
1.9	Wheelbase	y (mm)	1264 / 1181 <sup>4)</sup>		
Weight	2.1	Service weight	kg	700	
	2.2	Axle loading, laden front/rear	kg	505 / 195	
	2.3	Axle loading, unladen front/rear	kg	680 / 1220	
	3.1	Tires		Polyurethane	
	3.2	Tire size,front	Φxw (mm)	Φ210×75	
	3.3	Tire size,rear	Φxw (mm)	Φ84×93	
	3.4	Additional wheels(dimensions)	Φxw (mm)	Φ100×50	
	3.5	Wheels,number front/rear(x=driven wheels)		1x + 1 / 2	
	3.6	Tread, front	b <sub>10</sub> (mm)	550	
	3.7	Tread, rear	b <sub>11</sub> (mm)	400 / 515	
	4.2	Lowered mast height	h <sub>1</sub> (mm)	2320	
	4.3	Free Lift height	h <sub>2</sub> (mm)	—	
	4.4	Lift height	h <sub>3</sub> (mm)	3514	
	4.5	Extended mast height	h <sub>4</sub> (mm)	4077	
	4.6	Initial lift	h <sub>5</sub> (mm)	120	
	4.9	Height of tiller in drive position min./ max.	h <sub>14</sub> (mm)	710 / 1150	
	4.15	Height, lowered	h <sub>13</sub> (mm)	86	
	4.19	Overall length	l <sub>1</sub> (mm)	1752	
	4.20	Length to face of forks	l <sub>2</sub> (mm)	602	
	4.21	Overall width	b <sub>1</sub> (mm)	800	
	4.22	Fork dimensions	s/e/l (mm)	60 / 180 / 1150	
	4.25	Distance between fork-arms	b <sub>5</sub> (mm)	570 / 685	
	4.32	Ground clearance, centre of wheelbase	m <sub>2</sub> (mm)	24	
	4.33	Aisle width for pallets 1000X1200 crossways	A <sub>st</sub> (mm)	2290 / 2234 <sup>4)</sup>	
	4.34	Aisle width for pallets 800X1200 lengthways	A <sub>st</sub> (mm)	2209 / 2185 <sup>4)</sup>	
4.35	Turning radius	Wa (mm)	1467 / 1384 <sup>4)</sup>		
	5.1	Travel speed, laden/ unladen	km/h	4.2 / 4.5	
	5.2	Lift speed, laden/ unladen	m/s	0.11 / 0.16	
	5.3	Lowering speed, laden/ unladen	m/s	0.13 / 0.11	
	5.8	Max. gradeability, laden/ unladen	%	5 / 10	
	5.10	Service brake		Electromagnetic	
Electric- engine	6.1	Drive motor rating S2 60min	kW	0.65	
	6.2	Lift motor rating at S3 4.5%	kW	2.2	
	6.3	Battery acc. to DIN 43531/35/36 A, B, C, no		No	
	6.4	Battery voltage, nominal capacity K5	V / Ah	2x12 / 85 <sup>1)</sup>	24 / 60
	6.5	Battery weight +/-5%	kg	2 x 27 <sup>2)</sup>	19
	6.6	Energy consumption acc: to VDI cycle	kWh/h	0.66	
Additional data	8.1	Type of drive control		DC	
	8.4	Sound level at driver's ear acc. to EN 12053	dB(A)	<70	

1) Option: 2x12V/106Ah 2)2x12V/106Ah : 2 x 34kg 3) when operate the fork and pallet at the same time: Load Capacity / rated load (mast lift) < Load Capacity / rated load (support arm lift)  
4) Load section lowered / Load section raised

#### Mast table PSE 12BD/PSE 12ND

Designation	Lowered mast height h1 (mm)	Free lift height h2 (mm)	Lift height h3 (mm)	Extended mast height h4 (mm)	Lift + fork height h3 + h13(mm)
Single-stage mast	1970	1514	1514	1970	1600
	2370	1914	1914	2370	2000
Two-stage mast	1970	-	2814	3377	2900
	2120	-	3114	3677	3200
	2320	-	3514	4077	3600