

Type sheet for industrial truck acc. to VDI 2198

General					
1.1	Manufacturer				NOBLELIFT
1.2	Type				OPH12
1.3	Power				electric
1.4	Operator Type				order picker
1.5	Load Capacity	kg	1200		
1.6	Load Centre	c(mm)	600		
1.8	Load Distance	centre of support arm wheel to face of forks	x(mm)	175	
1.9	Wheel Base	y(mm)	1576		

Weights					
2.1	Weight	with battery	kg	3430	3460
2.2	Axle Load	w. load. front / rear	kg	1414/3216	1420/3240
2.3	Axle Load	w.o. load, front / rear	kg	1971/1459	1985/1475

Tyres					
3.1	Tyres Type				polyurethane
3.2	Tyres	front	mm	343 x140	
3.3	Tyres	rear	mm	152X74	
3.5	Wheels	number (x=driven) front/rear			1x/4
3.6	Track Width	front	b11(mm)	/	
3.7	Track Width	rear	b10(mm)	964	

Dimensions					
4.2	Mast	collapsed height	h1(mm)	2315	2415
4.3	Free Lift		h2(mm)	1665	1765
4.4	Lift Height		h3(mm)	4500	4800
4.5	Mast	extended height	h4(mm)	6715	7015
4.7	Overhead Guard Height		h6(mm)	2275	
4.8	Operator Stand Height	lowered	h7(mm)	150	
4.11	Additional Lift		h9(mm)	/	
4.14	Operator Stand Height	raised	h12(mm)	1080	
4.15	Fork Height	lowered	h13(mm)	60	
4.20	Headlength		l2(mm)	1985	
4.21	Overall Width	front / rear	b1/b2(mm)	1080/1070	
4.21a	Overall Width	operator platform	b9(mm)	1070	
4.22	Fork Dimension	standard	thxwd (mm)	50X100X1070	
4.22	Fork Dimension	optional length		760/915/990/1070/1220	
4.24	Fork Carriage Width		b3(mm)	/	
4.25	Width Across Forks	min. - max	b5(mm)	610-790	
4.27	Width Across Guide Rollers	in 6.5 mm increments	b6(mm)	/	
4.31	Ground Clearance	with load below mast	m1(mm)	60	
4.33	Working Aisle Width	minimum	Ast(mm)	1300	
4.35	Turning Radius		Wa (mm)	1830	
4.42	Transfer Aisle Width	1000x 1200 crosswise	Ast3(mm)	1400	
4.42	Transfer Aisle Width	800 x 1200 Lengthwise	Ast5(mm)	1300	

Performance					
5.1	Travel Speed	w./w.o.load	km/h	9	
5.2	Lift Speed	w./w.o.load	m/s	0.15/0.23	
5.3	Lowering Speed	w./w.o.load	m/s	0.30/0.30	
5.10	Service Brake				electro-maonetic, regenerative

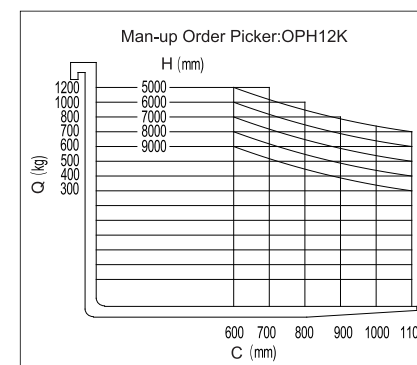
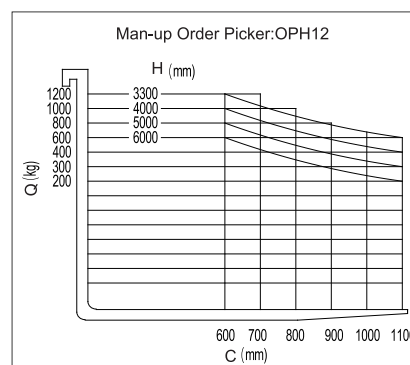
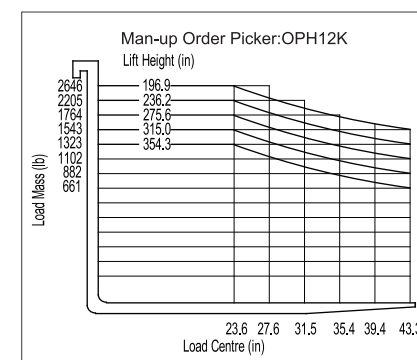
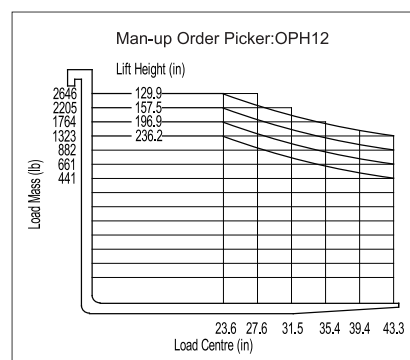
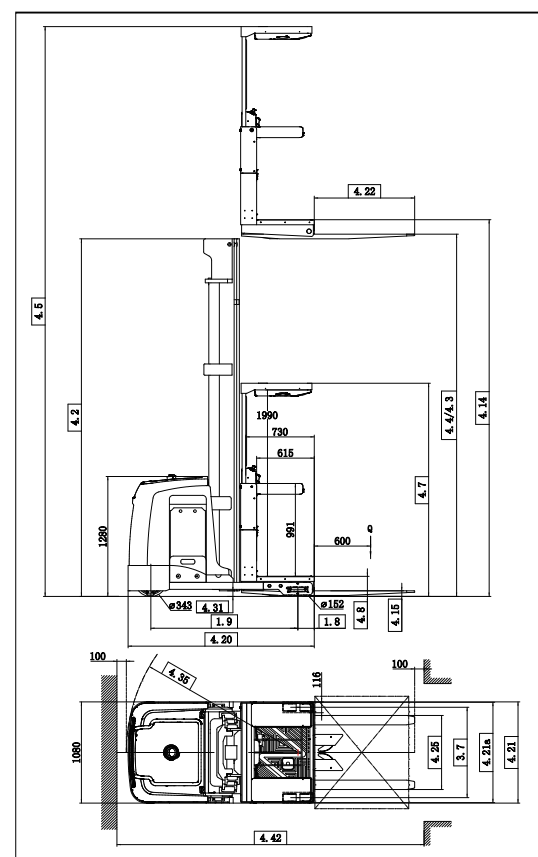
Motors					
6.1	Traction Motor	60 min. rating	kW	3.9	
6.2	Lift Motor	15% on time	kW	6.4	
6.3	Max. Battery Box Size		lxwxh(mm)	374x975x785	
6.4	Battery Voltage	nominal capacity K5	VAh	24V/1000	
6.5	Battery Weight	minimum	kg	810	

8.1	Type of Controller	drive			AC traction
-----	--------------------	-------	--	--	-------------

OPH12/OPH12K

Electric Order Picker

As e-commerce continues to surge in popularity and businesses embrace just-in-time inventory practices, order picking has become an integral part of daily operations in the warehousing industry. In order to meet the needs of customers with up to 9 meters of high storage racks, Noblilift has developed an electric order picker OPH12/OPH12K with a compact and ergonomic design, high performance AC drive, high capacity battery.



NOBLELIFT CHINA

Add:528 Changzhong Road,Taihu Sub-district, Changxing, Zhejiang 313100 China
Tel:86-572-6210817 6210311
Fax:86-572-6210777 6128612
Email:info@noblelift.com
Http:www.noblelift.com www.noblelift.cn



Official website



Our Wechat

NOBLELIFT

www.noblelift.cn



OPH12 OPH12K Electric Order Picker

NEW ARRIVAL
Noblelift Products

NOBLELIFT INTELLIGENT EQUIPMENT CO., LTD

Type sheet for industrial truck acc. to VDI 2198

General					
1.1	Manufacturer				NOBLELIFT
1.2	Type				OPH12
1.3	Power				electric
1.4	Operator Type				order picker
1.5	Load Capacity	lb	2646		
1.6	Load Centre	c(in)	23.6		
1.8	Load Distance	centre of support arm wheel to face of forks	x(in)	6.9	
1.9	Wheel Base	y(in)	62		

Weights					
2.1	Weight	with battery	lb	7562	7628
2.2	Axle Load	w. load. front / rear	lb	3117/7090	3131/7143
2.3	Axle Load	w.o. load, front / rear	lb	4345/3217	4376/3252

Tyres					
3.1	Tyres Type				polyurethane
3.2	Tyres	front	in	13.5 x 5.5	
3.3	Tyres	rear	in	6x2.9	
3.5	Wheels	number (x=driven) front/rear			1x/4
3.6	Track Width	front	b11(in)	/	
3.7	Track Width	rear	b10(in)	38	

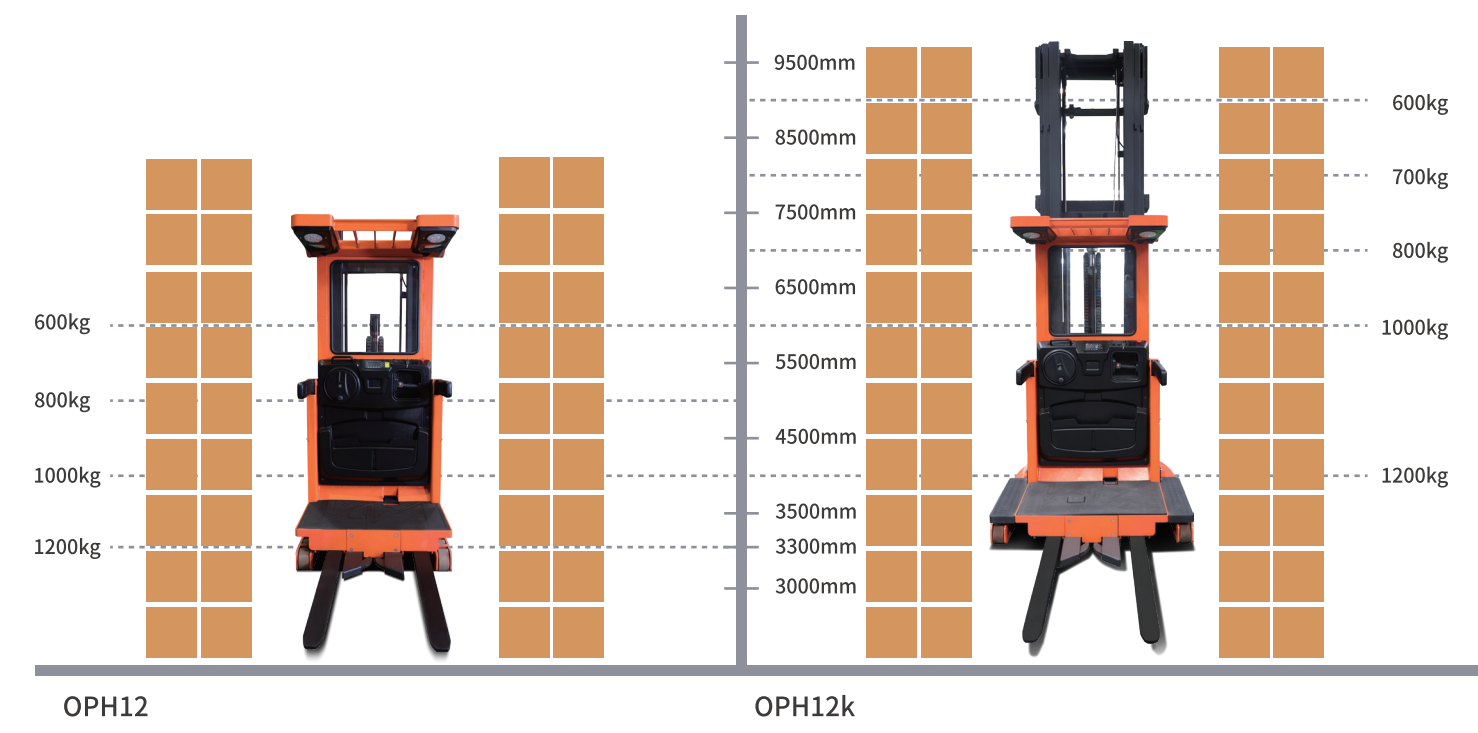
Dimensions					
4.2	Mast	collapsed height	h1(in)	91.1	95.1
4.3	Free Lift		h2(in)	65.6	69.5
4.4	Lift Height		h3(in)	177.2	189
4.5	Mast	extended height	h4(in)	264.4	276.2
4.7	Overhead Guard Height		h6(in)	89.6	
4.8	Operator Stand Height	lowered	h7(in)	5.9	
4.11	Additional Lift		h9(in)	/	
4.14	Operator Stand Height	raised	h12(in)	42.5	
4.15	Fork Height	lowered	h13(in)	2.4	
4.20	Headlength		l2(in)	78.1	
4.21	Overall Width	front / rear	b1/b2(in)	42.5/42.1	
4.21a	Overall Width	operator platform	b9(in)	42.1	
4.22	Fork Dimension	standard	thxwd (in)	2x3.9x42.1	
4.22	Fork Dimension	optional length		29.9/36/39/42.1/48	
4.24	Fork Carriage Width		b3(in)	/	
4.25	Width Across Forks	min. - max	b5(in)	24-31.1	
4.27	Width Across Guide Rollers	in 0.3 inch increments	b6(in)	/	
4.31	Ground Clearance	with load below mast	m1(in)	2.4	
4.33	Working Aisle Width	minimum	Ast(in)	51.2	
4.35	Turning Radius		Wa (in)	72	
4.42	Transfer Aisle Width	39.4 x 47.2 crosswise	Ast3(in)	55.1	
4.42	Transfer Aisle Width	31.4 x 47.2 Lengthwise	Ast5(in)	51.2	

Performance					
5.1	Travel Speed	w./w.o.load	mph	5.6	
5.2	Lift Speed	w./w.o.load	fps	0.49/0.75	
5.3	Lowering Speed	w./w.o.load	fps	0.98/0.98	
5.10	Service Brake				electro-maonetic, regenerative

Motors					
6.1	Traction Motor	60 min. rating	kW	3.9	
6.2	Lift Motor	15% on time	kW	6.4	
6.3	Max. Battery Box Size		lxwxh(in)	14.7 x 38.4 x 30.9	
6.4	Battery Voltage	nominal capacity K5	VAh	24V/1000	
6.5	Battery Weight	minimum	lb	1786	

8.1	Type of Controller	drive			AC traction
-----	--------------------	-------	--	--	-------------

Easy to operate, flexible and swift.

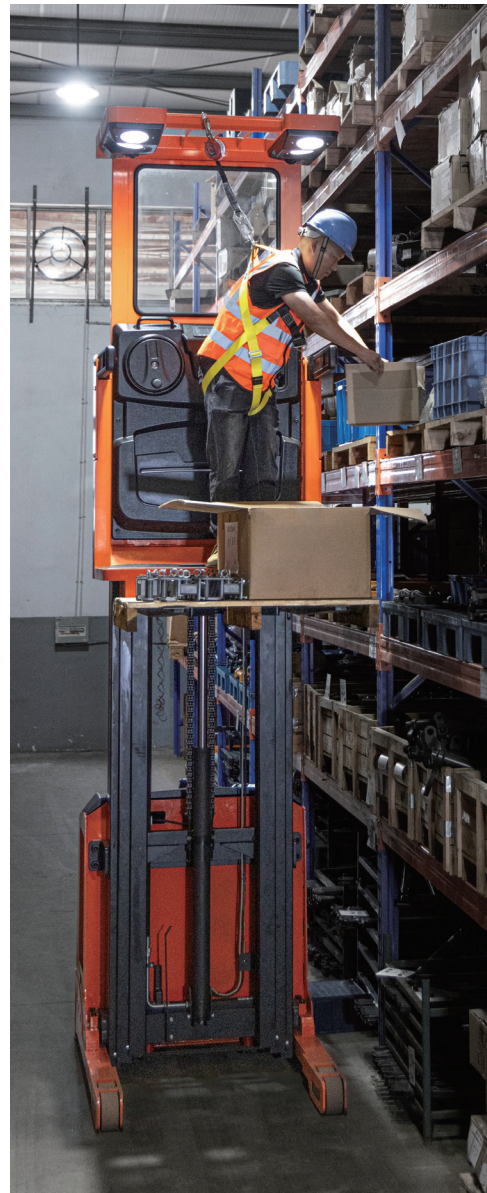


Type: OPH12 Type: OPH12K
 Load Capacity: 1200kg Load Capacity: 1200kg
 Max Lift Height: 6000mm Max Lift Height: 9000mm
 Max Mast extended height: 8215mm Max Mast extended height: 11215mm

360° in-situ steering available with both chassis sizes,
 Min. Turning radius only **1830mm**
 Min. aisle width **1300mm**



Safety Assured for High-Level Tasks

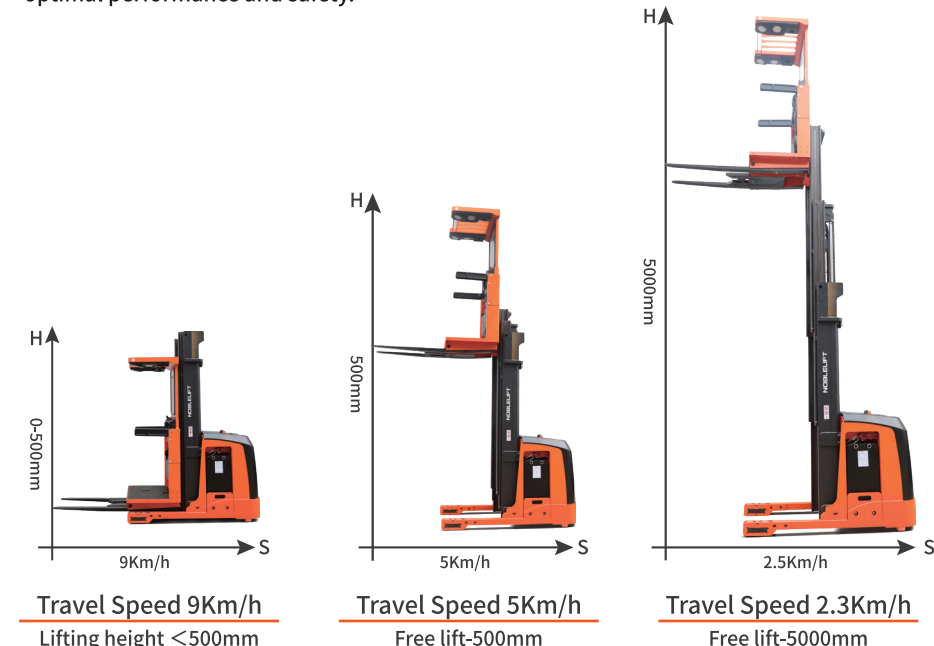


Speed reduction at turns
 Speed reduction at turns helps to ensure better maneuverability especially at high speed mode.

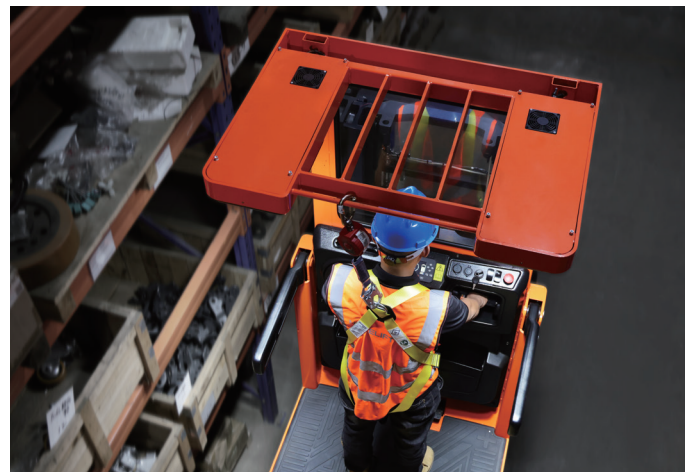
Pallet-locking
 Auto Pallet-locking Device - capable of securely clamping pallet stringers ranging from 32 mm to 150mm, providing instant load stabilization and significantly boosting load handling speed.

Safety device
 Equipped with self-retracting fall limiter and safety belt, which provides good protection for operator.

Real-time dynamic adjustment of key parameters on basis of the truck's current state
 Travel speed, lifting height, and loading capacity operate as an integrated system, ensuring optimal performance and safety.



Unrivaled Stability



Mast Durability
 The mast mechanism is crafted from high-strength and high-precision steel sections, and the excellent gap compensation structure design ensures the stability of the mast operation.

Robust Chassis
 The entire model range is constructed using imported channel steel. The chassis is available in two widths, 1080mm and 1420mm, and the wide chassis allows the platform to reach a higher pick-up area, with a maximum picking height of up to 9 meters.



Top notch configuration as standard

- Multi-functional handle, striking a perfect balance between safety and functionality.
- High-quality LED screen: lifting weight, lifting height, speed, power, steering, fault code, alarm and other information all at a glance.
- Highly configured core components: enhancing efficiency, minimizing energy consumption. featuring AC drive, high-performance motors, imported gearbox, control programs tailored for high racks, satisfying various working conditions.
- Platform and rack lights are fitted as standard for easy retrieval of goods in dimly lit areas
- Standard high-power platform fan keeps operators comfortable in high temperatures.
- Standard safety warning lights; buzzer; blue light for a safe driving.

Optional

- Smart start: optional PIN-code panel with RFID card access
- Headlights for driving at night and in dark places
- Large-capacity battery, maximum battery capacity 24V/1000Ah; optional lithium battery, to meet the daily work of most of the warehouses.



Type sheet for industrial truck acc. to VDI 2198

Type sheet for industrial truck acc. to VDI 2198							
General							
1.1	Manufacturer						
1.2	Type				OPH12K		OPH12K
1.3	Power				electric		electric
1.4	Operator Type				order picker		order picker
1.5	Load Capacity	Q(kg/lb)	1200				2646
1.6	Load Centre	c(mm/in)	600				23.6
1.8	Load Distance	centre of support arm					175
1.9	Wheel Base	wheel to face of forks					62
		x(mm/in)					
		y(mm/in)					
Weights							
2.1	Weight	with battery	kg / lb	3920	4020	4120	8642
2.2	Axle Load	w. load. front / rear	kg / lb	1596/3524	1644/3576	1703/3637	3519/7769
2.3	Axle Load	w.o. load. front / rear	kg / lb	2170/1750	2217/1803	2265/1855	4784/3858
							4888/3975
							4993/4090
Tyres							
3.1	Tyres Type				polvurethane		polvurethane
3.2	Tyres	front	xw(mm/in)	343X140			13.5 x 5.5
3.3	Tyres	rear	xw(mm/in)	152X74			6x2.9
3.5	Wheels	number (x=driven) front/rear			1x/4		1x/4
3.6	Track Width	front	b11(mm/in)	/			/
3.7	Track Width	rear	b10(mm/in)	1304			51.3
Dimensions							
4.2	Mast	collapsed height	h1(mm/in)	3145	3481	3815	123.8
4.3	Free Lift		h2(mm/in)	2495	2831	3165	98.2
4.4	Lift Height		h3(mm/in)	7000	8000	9000	275.6
4.5	Mast	extended height	h4(mm/in)	9215	10215	11215	362.8
4.7	Overhead Guard Height		h6(mm/in)	2275			89.6
4.8	Operator Stand Height	lowered	h7(mm/in)	150			5.9
4.11	Additional Lift		h9(mm/in)	/			/
4.14	Operator Stand Height	raised	h12(mm/in)	1420			55.9
4.15	Fork Height	lowered	h13(mm/in)	60			2.4
4.20	Headlength		l1(mm/in)	1985			78.1
4.21	Overall Width	front / rear	b1/b2(mm/in)	1080/1420			42.5/55.9
4.21a	Overall Width	operator platform	b9(mm/in)	1420			55.9
4.22	Fork Dimension	standard	thxw1 (mm/in)	50X100X1070			2X3.9X42.1
		optional length	(mm/in)	760/915/990/1070/1220			29.9/36/39/42.1/48
4.24	Fork Carriage Width		b3(mm/in)	/			/
4.25	Width Across Forks	min. - max	b5(mm/in)	610-790			24-31.1
4.27	Width Across Guide Rollers	in 6.5 mm (0.3inch) increments	b6(mm/in)	/			/
4.31	Ground Clearance	with load below mast	m1(mm/in)	60			2.4
4.33	Working Aisle Width	minimum	Ast1(mm/in)	1620			63.8
4.35	Turning Radius		Wa (mm/in)	1830			72
4.42	Transfer Aisle Width	1000x 1200 (39.7x47.2) crosswise	Ast3(mm/in)	1620			63.8
		800 x 1200 (31.4x47.2) Lengthwise	Ast5(mm/in)	1620			63.8
Performance							
5.1	Travel Speed	w./w.o.load	km/h / mph	9			5.6
5.2	Lift Speed	w./w.o.load	m/s/fps	0.15/0.23			0.49/0.75
5.3	Lowering Speed	w./w.o.load	m/s/fps	0.30/0.30			0.98/0.98
5.10	Service Brake					electro-maonetic, regenerative	electro-maonetic, regenerative
Motors							
6.1	Traction Motor	60 min. rating	kW	3.9			3.9
6.2	Lift Motor	15% on time	kW	6.4			6.4
6.3	Max. Battery Box Size		lxwxh(in)	374x975x785			14.7 x 38.4 x 30.9
6.4	Battery Voltage	nominal capacity K5	V/Ah	24V/1000			24V/1000
6.5	Battery Weight	minimum	kg / lb	810			1786
8.1	Type of Controller	drive				AC traction	AC traction