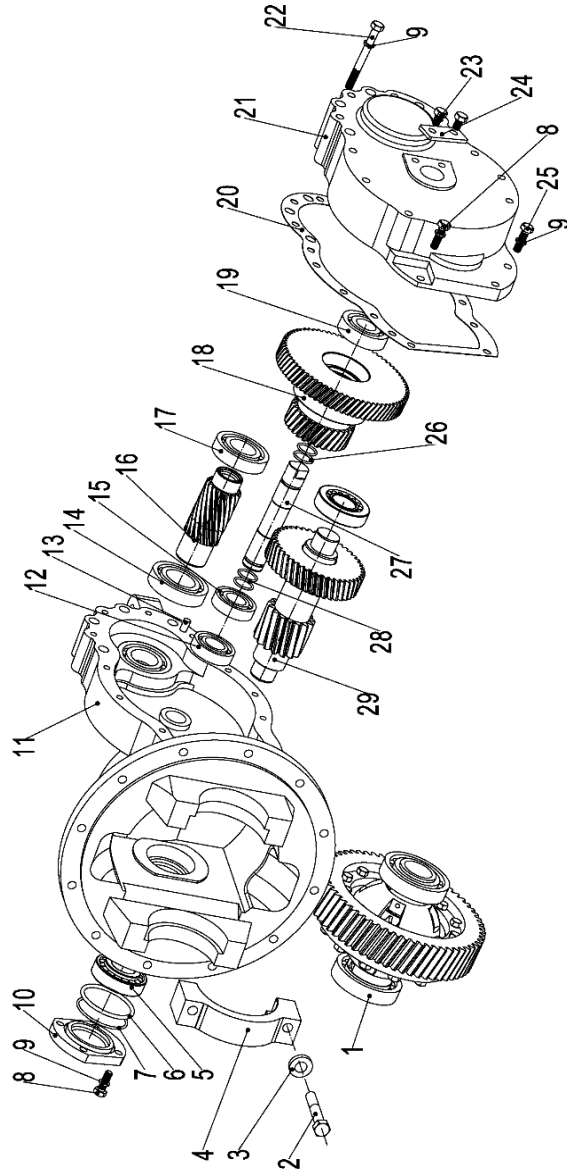
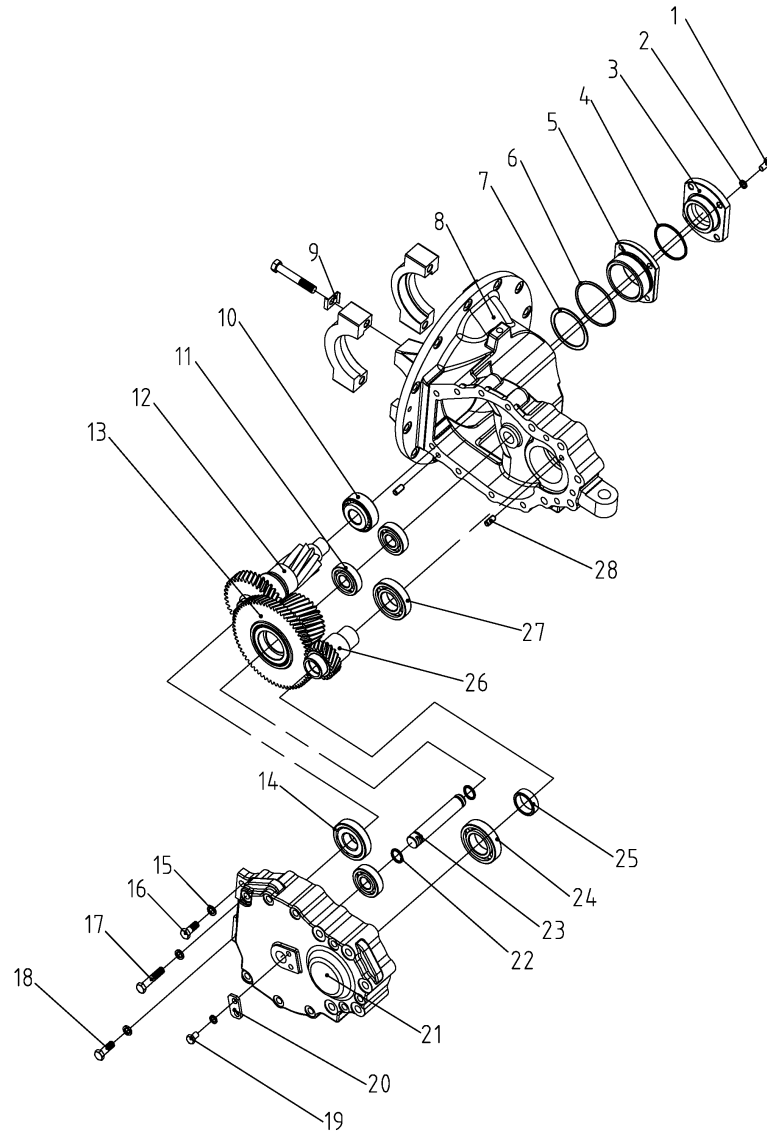


256898501003变速箱(ZN)/GEARBOX(ZN)



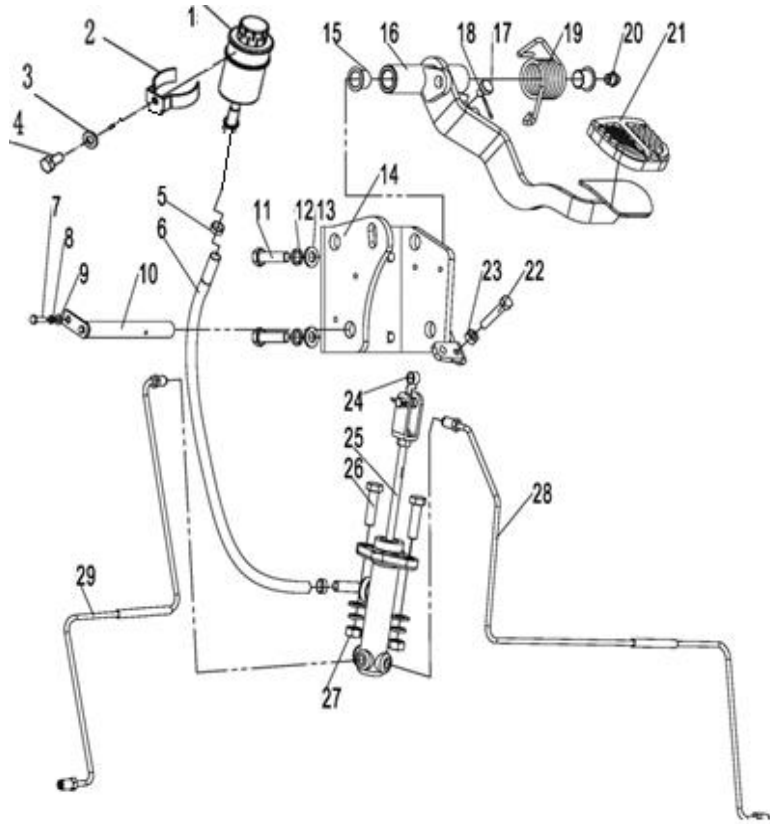
序号/NO	编码/SN	名称
1	256898514001	差速器总成HDCS35III.A. 901
2	256898524001	螺栓YDS30. 089
3	256898524002	重型弹簧垫圈GB/T7244-14
4	256898524003	轴承座YDS30. 072
5	255098524023	圆锥滚子轴承32207
6	256898524004	调整垫YDS30. 090
7	256898524005	O形圈73×3.1 GB1235
8	910100300036	六角头螺栓GB5783-M10×25
9	910400500007	标准型弹簧垫圈GB93-10
10	256898524006	轴承盖YDS30. 168
11	256898524007	箱体HDCS35III.A. 001
12	910700200021	深沟球轴承GB/T276-6206
13	255098526008	圆柱销GB/T119. 1-10×20
14	910700200023	深沟球轴承GB/T276-6208
15	256898524008	圆柱滚子轴承GB/T283-NJ2206E
16	256898524009	输入轴HDCS35III.A. 003
17	910700200024	深沟球轴承GB/T276-6209
18	256898524010	双联齿轮组件HDCS35III.A. 803
19	910700200033	深沟球轴承6307 GB/T 276
20	256898524011	箱体箱盖结合面纸垫HDCS35III.A. 010
21	256898524012	箱盖HDCS35III.A. 002
22	910100100040	六角头螺栓GB5782-M10×90
23	910100300034	六角头螺栓GB5783-M10×16
24	256898524013	挡块HDCS25. 008
25	910100300038	六角头螺栓GB5783-M10×35
26	910800100006	O形圈35×3.1 GB1235
27	256898524014	中间轴HDCS35III.A. 009
28	255098524010	O形圈25×2.65 GB/T3452. 1
29	256898524015	齿轴组件HDCS35III.A. 804

256898501005变速箱(ZC)/GEARBOX(ZC)



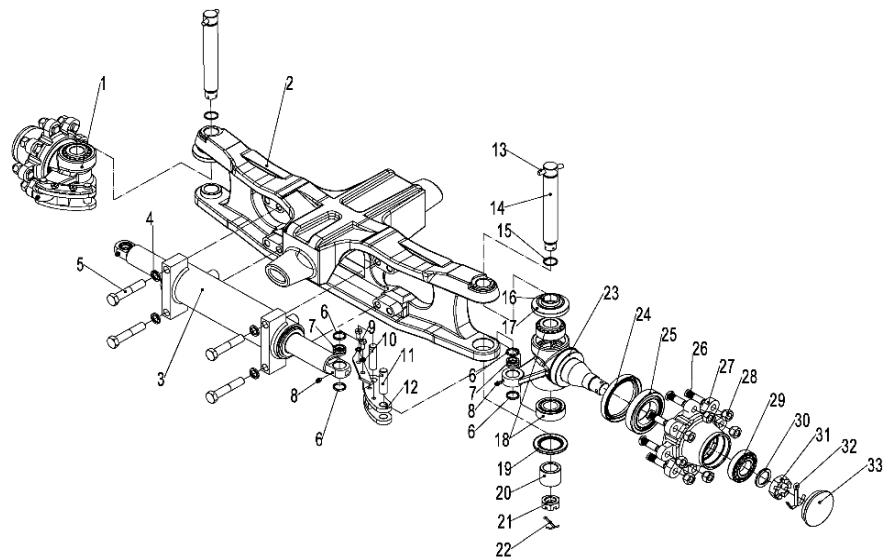
序号/NO	编码/SN	名称
1	910100300036	螺栓M10×25
2	910400500007	弹簧垫圈10
3	255098524050	轴承盖Y30H-09001
4	910800100032	O型圈75×3.1
5	255098524051	齿轴垫片Y30H-09002A
5	255098524052	齿轴垫片Y30H-09002B
5	255098524053	齿轴垫片Y30H-09002C
5	255098524054	齿轴垫片Y30H-09002D
6	255098524055	箱体组件HDCSB30-01200
7	255098524056	轴承座锁片YQX25-01008
8	255098524023	圆锥滚子轴承32207
9	910700200021	深沟球轴承6206
10	255098524057	齿轴HDCSB30-04000-1
11	255098524058	双联齿轮HDCSB30-03000-1
12	910100300039	螺栓 M10X40
13	910100100125	螺栓 M10X100
14	910100300034	螺栓 M10X16
15	255098524059	挡块HDCS25-03001
16	255098524060	箱盖HDCSB30-01002
17	255098524042	深沟球轴承6306
18	255098524010	O型圈 25X2.65
19	255098524061	轴HDCSB30-03003
20	910700200023	深沟球轴承 6208
21	255098524062	密封盖HDCSB30-02002
22	255098524063	输入轴HDCSB30-02001-1
23	910700200024	深沟球轴承 6209
24	910600100029	圆柱销10X24

256898501010行车制动安装/DRIVING BRAKING INSTALLA'



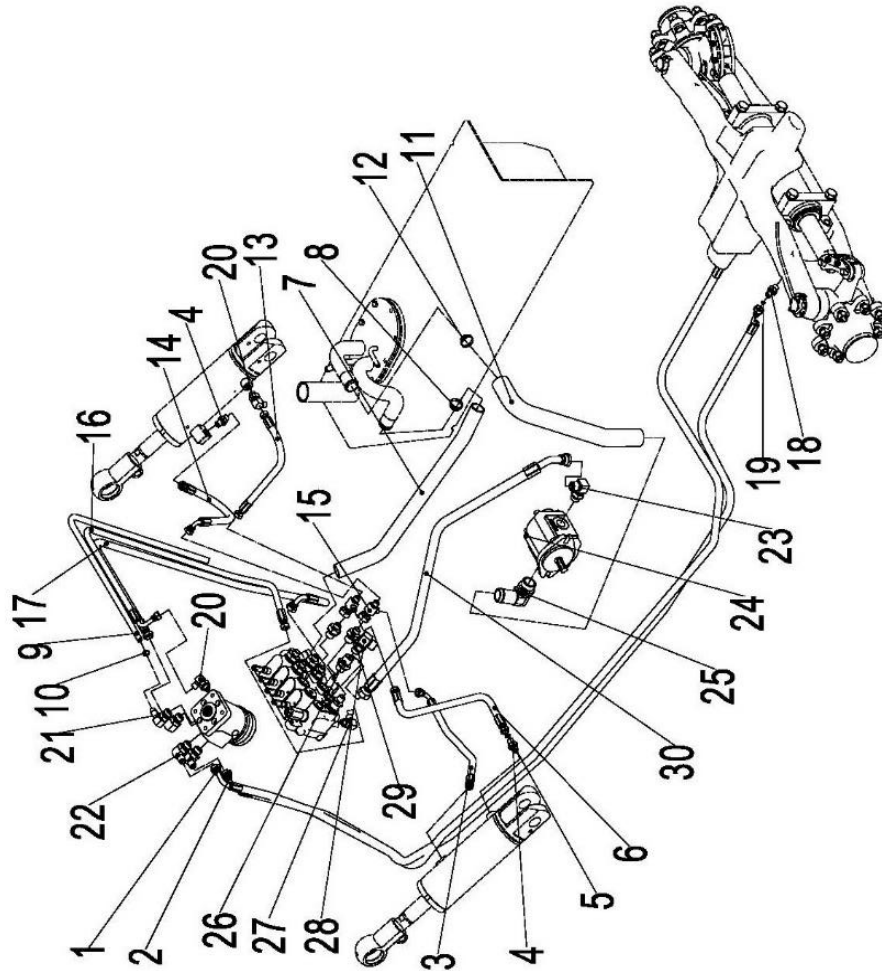
序号/NO	编码/SN	名称
1	275011520020	油杯
2	275211511020	油杯固定环
3	910400500007	弹簧垫圈GB93-8
4	910100300020	螺栓GB5783-M8x16-8.8
5	911000600001	喉箍QC/T390-(11-14)
6	255011520021	连接管
7	910100300003	螺栓GB5783-M5x12-8.8
8	910400500004	弹簧垫圈GB93-5
9	910400100004	平垫圈GB97.1-5-200HV
10	255011510003	带耳轴Φ16x135
11	910100300039	螺栓GB5783-M10x40-8.8
12	910400500007	弹簧垫圈GB93-10
13	910400100007	平垫圈GB97.1-10-200HV
14	256811511004	脚制动支架焊合
15	940500100006	复合套Φ16xΦ18x15-SF-1
16	256811511002	踏板焊合
17	255011520010	缓冲垫
18	910600600015	开口销GB91-2x20
19	255011520008	扭簧
20	911200100004	油杯JB7940.1-M10x1
21	255011520013	踏板(橡胶)
22	910100100023	螺栓GB5782-M8x45-8.8
23	910300100006	螺母GB6170-M8-10
24	940500100048	复合套Φ10xΦ12x8-SF-1
25	256811510001	制动泵总成
26	910100300038	螺栓GB5783-M10x35-8.8
27	910300100007	螺母GB6170-M10-10
28	256811511009	右制动钢管
29	256811511010	左制动钢管

252198501013转向桥及安装/STEERING BRIDGE AND INSTALI

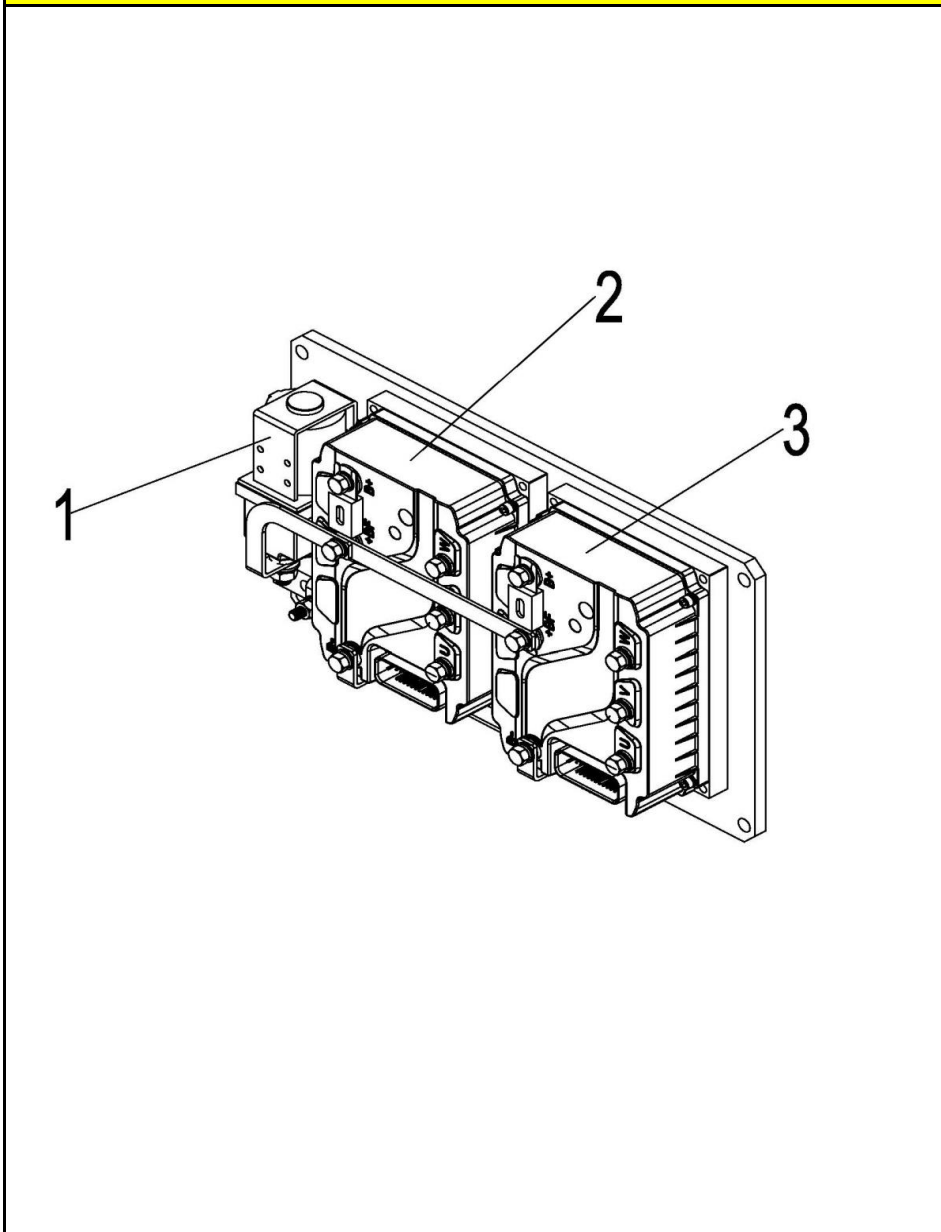


序号/NO	编码/SN	名称
A	256816010001	30Q转向桥
1	256898526001	左转向节Z30KD011G
2	256898526002	桥体ZDS/K30-35D-03
3	256898516001	转向油缸LGZN030K-0100
4	910400500010	弹簧垫圈16
5	910100100073	六角螺栓M16X65
6	256898526003	衬套Z30KD024
7	256898526004	关节轴承Z30KD023
8	254198526085	直通式压注油杯M6
9	910100300022	六角螺栓M8X18
10	910400500006	弹簧垫圈8
11	256898526005	连杆销Z30KD025
12	256898526006	连杆Z30KD002
13	256898526007	销轴Z30KD004G
14	256898526008	转向节主销ZBYD27KD010G
15	910800100084	O形圈25X2.65
16	256898526009	防尘圈座ZBD20KD011G
17	256898526010	防尘圈Z30KD006G
18	256898526011	圆锥滚子轴承33206
19	256898526012	复合防尘圈Z30KD009G
20	256898526013	衬套ZDS/K30-35KD-05
21	256898526014	销锁紧螺母Z30KD010G
22	256898526015	开口销3.2X50
23	256898526016	右转向节Z30KD007G
24	256898526017	旋转轴唇形密封圈FB85X110X12
25	256898526018	圆锥滚子轴承30211E
26	256898526019	轮毂螺栓Z30KD013
27	256898526020	转向轮毂Z30KD011
28	256898526021	轮毂螺母Z30KD012
29	910700600003	圆锥滚子轴承30207
30	910400100016	平垫圈30
31	256898526022	开六角开槽薄螺母Z30KD009

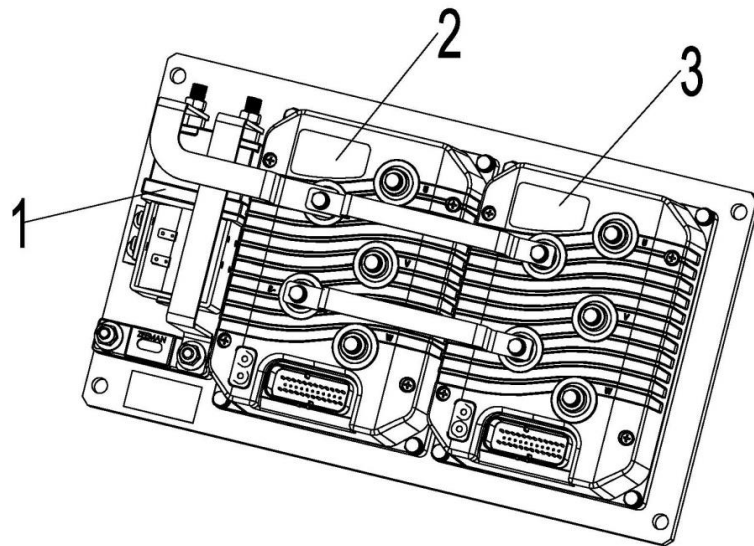
256898501021 液压系统/HYDRAULIC



序号/NO	编码/SN	名称
1	256823520001	液压管总成(异)8-L2500-1SC-60°
2	256823520009	液压管总成(异)8-L2700-1SC-60°
3	256823520003	液压管总成(90°)6-L750-1SC-60°
4	255023520007	接头(直)6-G1/4-M14x1.5-60°
5	910800100021	O形圈-内11.2x2.65
6	275223521006	液压管总成(90°)6-L700-1SC-60°
7	256523520014	胶管(回油)
8	911000600004	喉箍QC/T390-(34-38)
9	900200401001	回油胶管23x5
10	911000600003	喉箍QC/T390-(22-26)
11	255023520008	胶管(吸油)
12	911000600006	喉箍QC/T390-(40-45)
13	256823520004	液压管总成(135°)6-L450-1SC-60°
14	252123520002	液压管总成(135°)6-L600-1SC-60°
15	255023510012	接头(三通)7-2xM14x1.5-M16x1.5-60°
16	252123520011	液压管总成(90°)6-L1320-1SC-60°
17	251123521005	液压管总成(90°)8-L1320-1SC-60°
18	255023520034	接头(直)8-2xM16x1.5-60°
19	910800100002	O形圈-内13.2x2.65
20	255023510003	接头(锁定弯)6-G1/4-M14x1.5-60°
21	255023510008	接头(锁定弯)11-M20x1.5-0
22	255023510007	接头(锁定弯)10-M20x1.5-M16x1.5-60°
23	255023520035	接头(锁定弯)12-G1/2-M22x1.5-60°
24	255023510006	齿轮泵
25	255023510005	接头(转向弯)25-G1-Φ32
26	255023520030	接头(直)12-2xM22x1.5-60°
27	255023510001	接头(锁定弯)6-M12x1.5-M14x1.5-60°
28	255044020143	接头(锁定弯)12-M20x1.5-M22x1.5-60°
29	255023520033	接头(直)8-M20x1.5-M16x1.5-60°
30	252144029001	液压管总成(135°)13-L850-2SC-60°



序号/NO	编码/SN	名称
1	920700100006	接触器DC80V-SW200-583
2	921400100144	控制器ACM80350
3	921400100144	控制器ACM80350

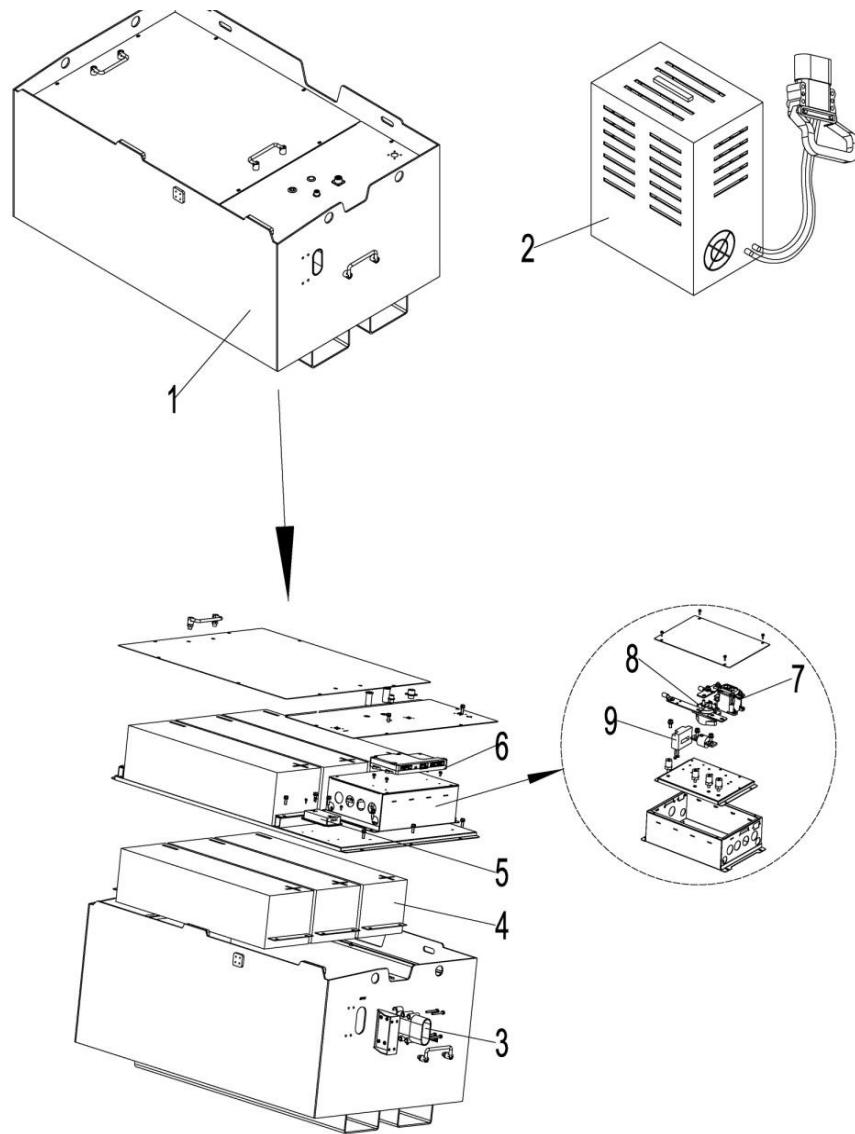


序号/NO	编码/SN	名称
1	920700100006	接触器DC80V-SW200-583
2	921400100054	控制器1234SE-6321
3	921400100054	控制器1234SE-6321

256898501032 蓄电池/BATTERY

序号/NO	编码/SN	名称
1	256837010001	锂电池80V-200 (JN-B)
1	256837010002	锂电池80V-300 (JN-B)

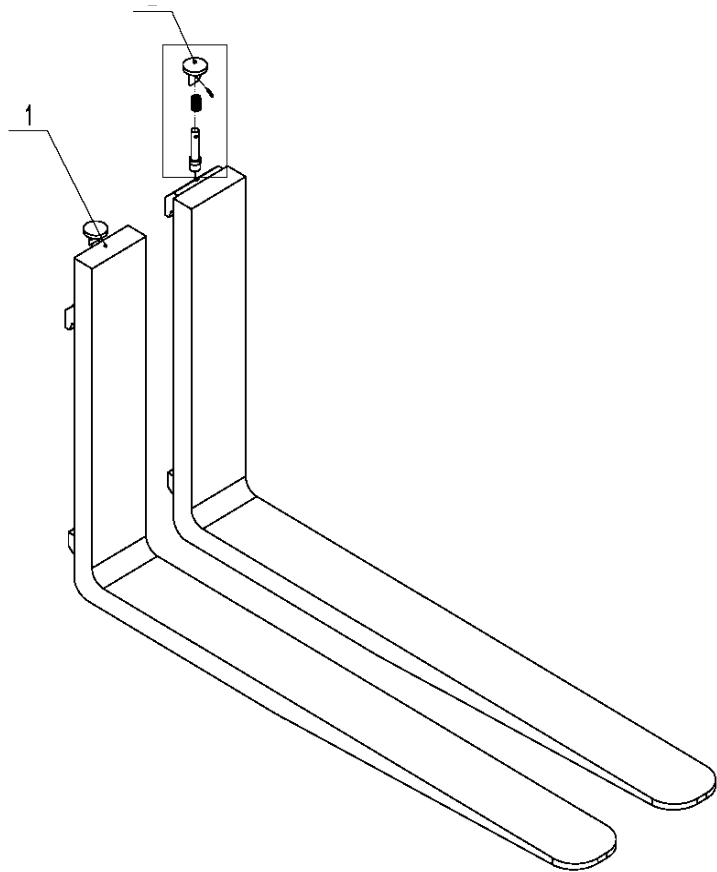




1	256837010003	锂电池80V-400(JN-B)
2	256835612104	锂电充电器80V65A(三相380V)
2	256835612105	锂电充电器80V65A(三相380-415V)
2	256835612106	锂电充电器80V65A(三相220-240V)
2	256835612107	锂电充电器80V65A(三相460-480V)
2	256835612108	锂电充电器80V100A(三相380V)
2	256835612109	锂电充电器80V100A(三相380-415V)
2	256835612110	锂电充电器80V100A(三相220-240V)
2	256835612111	锂电充电器80V100A(三相460-480V)
2	256835612112	锂电充电器80V150A(三相380V)
2	256835612113	锂电充电器80V150A(三相380-415V)
2	256835612114	锂电充电器80V150A(三相220-240V)
2	256835612115	锂电充电器80V150A(三相460-480V)
2	256835612116	锂电充电器80V200A(三相380V)
2	256835612117	锂电充电器80V200A(三相380-415V)
2	256835612118	锂电充电器80V200A(三相220-240V)
2	256835612119	锂电充电器80V200A(三相460-480V)
3	256898537002	REMA充电插件总成(母插320A)
4	256898537003	电池模组(GF-30Q)
5	256098537005	DC转换器(80V/12V)
6	256898537003	BMS控制器(80/200-30Q)
6	256898537004	BMS控制器(80/300-30Q)
6	256898537005	BMS控制器(80/400-30Q)
7	251198537007	充电直流接触器
8	251198537008	放电直流接触器
9	251198537009	电流传感器

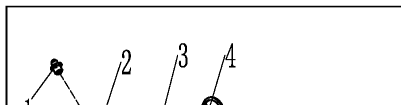
256898501033货叉/FORK

序号/NO	编码/SN	名称
	940100100013	挂钩III A型货叉125x45x1070
	940100100014	挂钩III A型货叉125x45x1150
	940100100015	挂钩III A型货叉125x45x1220

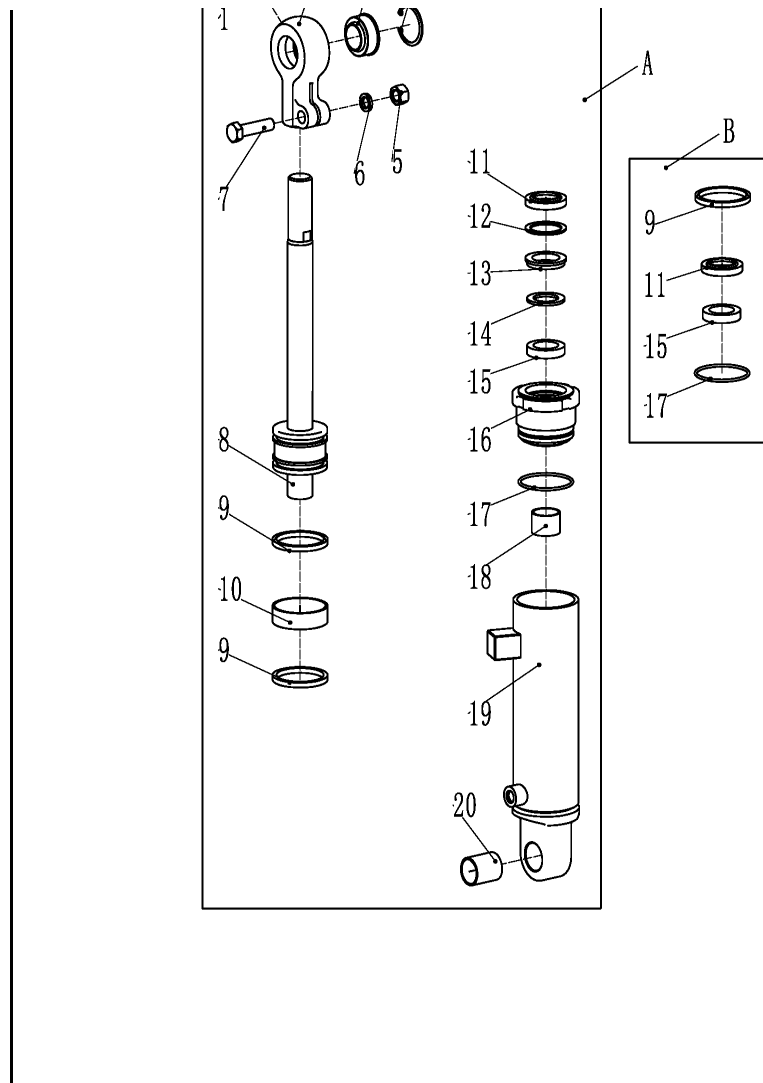


A	940100100016	挂钩ⅢA型货叉125x45x1370
	940100100017	挂钩ⅢA型货叉125x45x1520
	940100100035	挂钩ⅢA型货叉125x45x1970
	940100100039	挂钩ⅢA型货叉125x45x1820
	940100100041	挂钩ⅢA型货叉125x45x1670
A	940100100018	挂钩ⅢA型货叉125x50x1070
	940100100019	挂钩ⅢA型货叉125x50x1150
	940100100020	挂钩ⅢA型货叉125x50x1220
	940100100021	挂钩ⅢA型货叉125x50x1370
	940100100022	挂钩ⅢA型货叉125x50x1520
	940100100031	挂钩ⅢA型货叉125x50x1800
	940100100040	挂钩ⅢA型货叉125x50x1970
	940100100042	挂钩ⅢA型货叉125x50x1670
1	▲	Fork body
2	253098514101	Lift pin assembly

256898501034 倾斜油缸/TILT CYLINDER

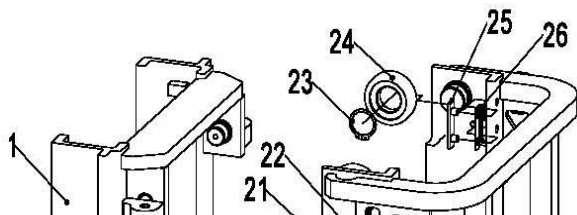


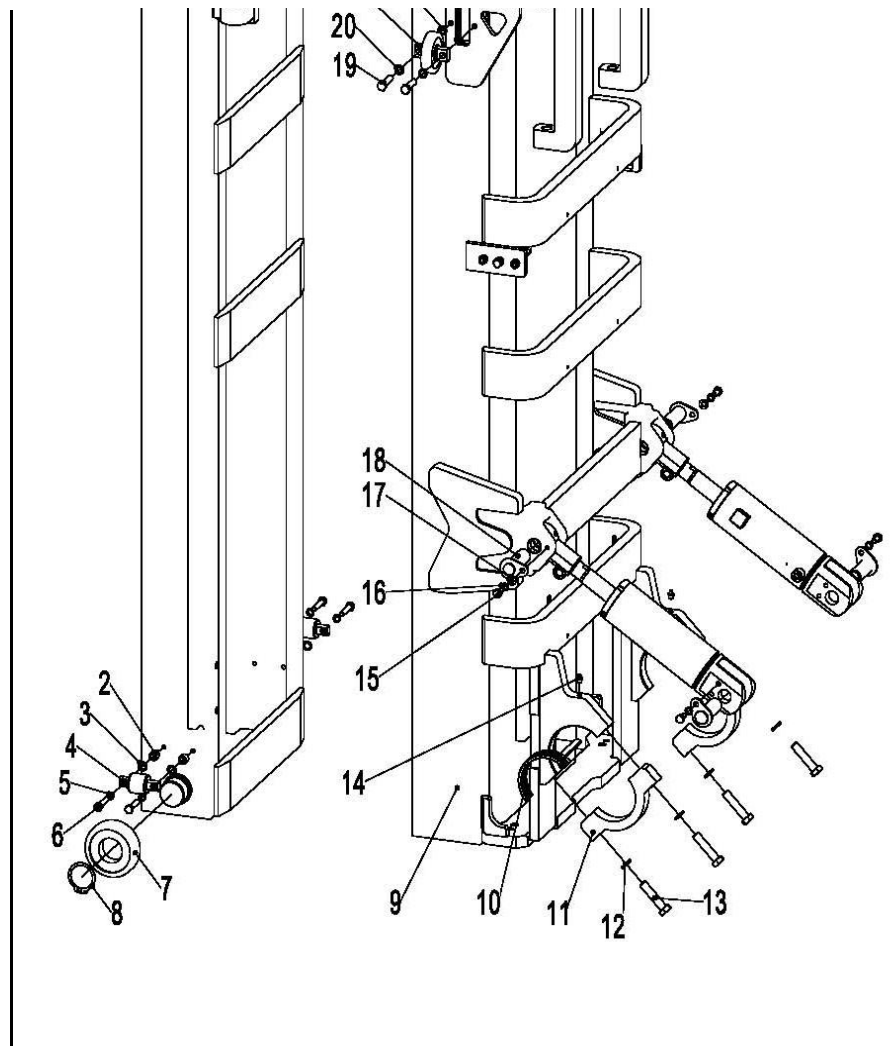
序号/NO	编码/SN	名称
A	256820510001	油缸(TL) (TL) $\Phi 80 \times \Phi 35 \times 118$ (6/10)
A	256820510002	油缸(TL) (TL) $\Phi 80 \times \Phi 35 \times 88.5$ (6/6)
A	256820510003	油缸(TL) (TL) $\Phi 80 \times \Phi 35 \times 67$ (6/10)
A	256820510004	油缸(TL) (TR) $\Phi 80 \times \Phi 35 \times 118$ (6/10)



A	256820510005	油缸(TL) (TRL) $\Phi 80 \times \Phi 35 \times 88.5$ (6/6)
A	256820510006	油缸(TL) (TR) $\Phi 80 \times \Phi 35 \times 67$ (6/10)
B	256198510006	密封件修理包(倾斜缸)
1	▲	直通式滑脂嘴Z1/8
2	▲	耳环
3	▲	关节轴承GE30ES
4	▲	挡圈47
5	▲	螺母M14
6	▲	垫圈14
7	▲	螺栓M14x55
8	▲	活塞体总成
9	▲	Yx型密封圈
10	▲	支承环D63x20x2.5
11	▲	防尘圈
12	▲	挡圈52
13	▲	挡圈
14	▲	挡片48x30x3
15	▲	U型密封圈
16	▲	导向套
17	▲	O型密封圈
18	▲	钢背轴承3025
19	▲	缸筒总成
20	▲	钢背轴承3040

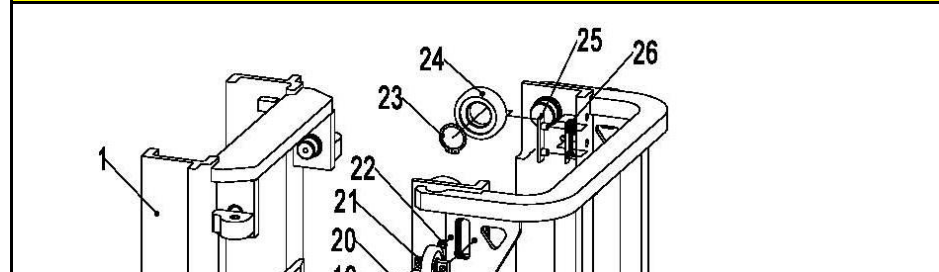
256898501035门架(标准门架)/MAST(stand mast)		
序号/NO	编码/SN	名称
1	256844012001	内门架焊合(2000)
1	256844012002	内门架焊合(2500)
1	256844012003	内门架焊合(3000)
1	256844012004	内门架焊合(3300)
1	256844012005	内门架焊合(3500)



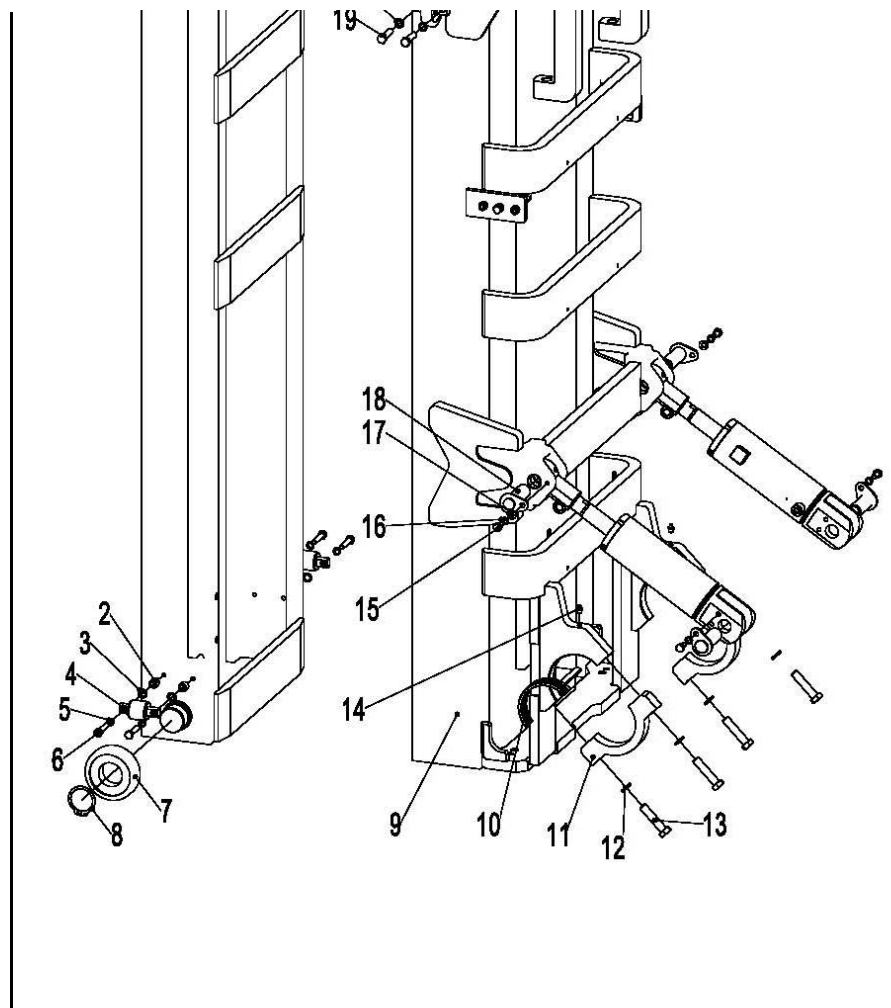


1	256844012006	内门架焊合(3600)
1	256844012007	内门架焊合(3700)
1	256844012008	内门架焊合(4000)
1	256844012009	内门架焊合(4300)
1	256844012010	内门架焊合(4500)
1	256844012011	内门架焊合(5000)
1	256844012012	内门架焊合(5500)
1	256844012013	内门架焊合(6000)
1	256844012051	内门架焊合(2000)
1	256844012052	内门架焊合(2500)
1	256844012053	内门架焊合(3000)
1	256844012054	内门架焊合(3300)
1	256844012055	内门架焊合(3500)
1	256844012056	内门架焊合(3600)
1	256844012057	内门架焊合(3700)
1	256844012058	内门架焊合(4000)
1	256844012059	内门架焊合(4300)
1	256844012060	内门架焊合(4500)
1	256844012061	内门架焊合(5000)
1	256844012062	内门架焊合(5500)
1	256844012063	内门架焊合(6000)
2	255038020008	调整套
3	255038020009	调整垫
4	940200200005	侧滚轮 $\Phi 42$ -CD=68
5	910400500007	弹簧垫圈GB93-10
6	910100300039	螺栓GB5783-M10x40-8.8
7	940200300014	复合滚轮 $\Phi 119.2$ -range=59.5-64.5

256898501035门架(标准门架)/MAST(stand mast)

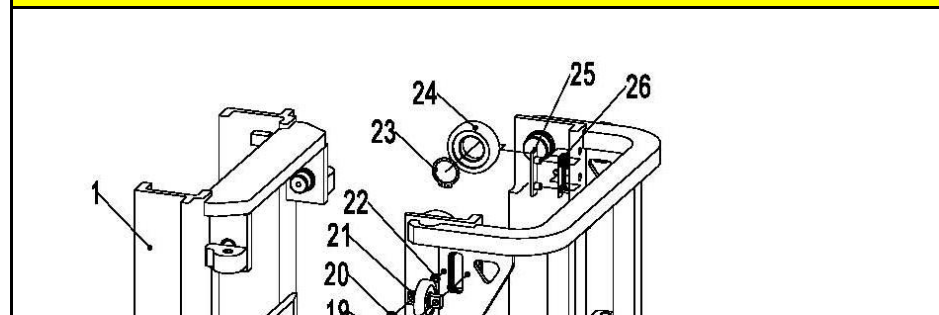


序号/NO	编码/SN	名称
7	940200300025	复合滚轮 $\Phi 119.6$ -range=59.5-64.5
7	940200300026	复合滚轮 $\Phi 120$ -range=59.5-64.5
8	910401300026	轴用弹性挡圈GB894.1-55
9	256844011001	外门架焊合(2000)
9	256844011002	外门架焊合(2500)
9	256844011003	外门架焊合(3000)

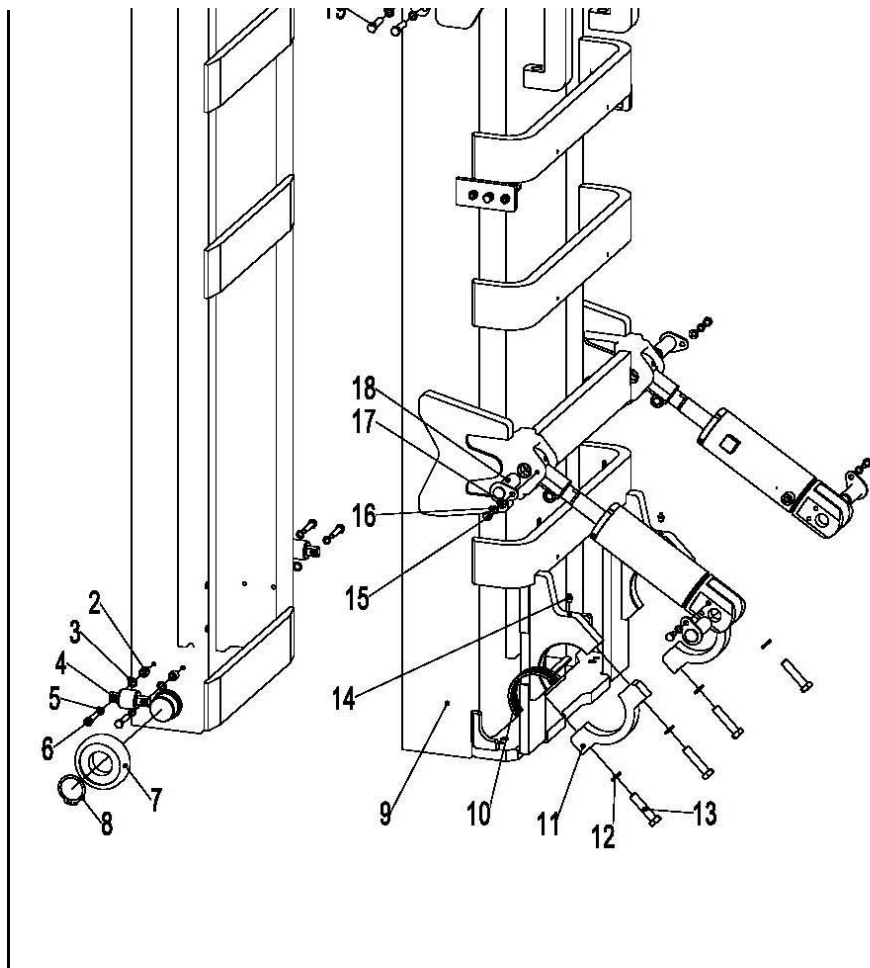


9	256844011004	外门架焊合(3300)
9	256844011005	外门架焊合(3500)
9	256844011006	外门架焊合(3600)
9	256844011007	外门架焊合(3700)
9	256844011008	外门架焊合(4000)
9	256844011009	外门架焊合(4300)
9	256844011010	外门架焊合(4500)
9	256844011011	外门架焊合(5000)
9	256844011012	外门架焊合(5500)
9	256844011013	外门架焊合(6000)
9	256844011051	外门架焊合(2000)
9	256844011052	外门架焊合(2500)
9	256844011053	外门架焊合(3000)
9	256844011054	外门架焊合(3300)
9	256844011055	外门架焊合(3500)
9	256844011056	外门架焊合(3600)
9	256844011057	外门架焊合(3700)
9	256844011058	外门架焊合(4000)
9	256844011059	外门架焊合(4300)
9	256844011060	外门架焊合(4500)
9	256844011061	外门架焊合(5000)
9	256844011062	外门架焊合(5500)
9	256844011063	外门架焊合(6000)
10	255044020006	轴瓦
11	255044020005	支座盖
12	910100200016	螺栓GB5785-M16x1.5x70-8.8

256898501035门架(标准门架)/MAST(stand mast)

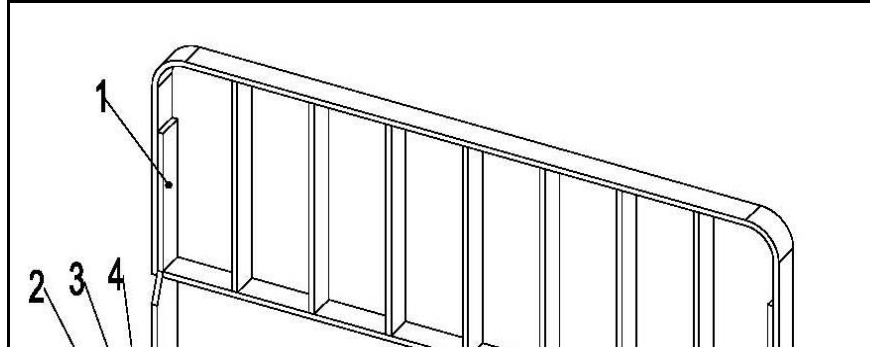


序号/NO	编码/SN	名称
13	910400500010	弹簧垫圈GB93-16
14	911200100004	油杯JB7940.1-M10x1
15	910100300035	螺栓GB5783-M10x20-8.8
16	910400500007	弹垫 10
17	910400100007	平垫圈GB97.1-10-200HV
18	255044010057	带耳轴Φ30x82
19	910100300050	全螺纹六角头螺栓GB5783-M12x30-8.8

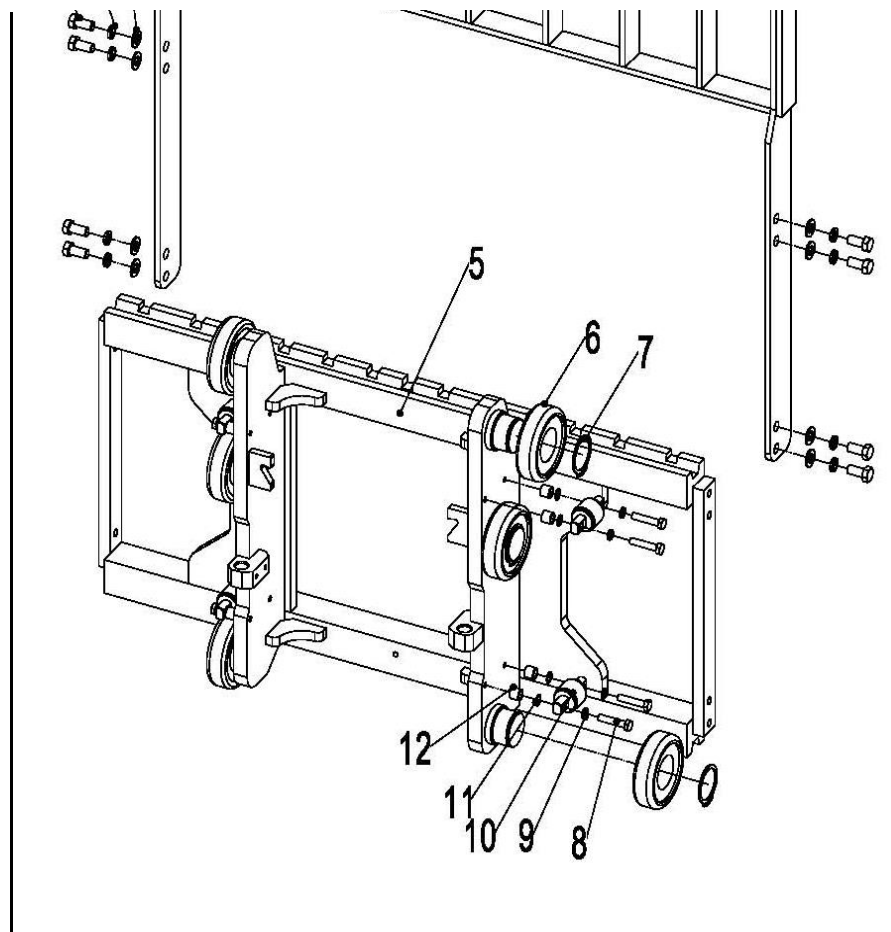


20	910400500008	弹垫 12
21	940200200002	侧滚轮 $\Phi 87-CD=55$
22	256544020701	垫圈 $\Phi 20 \times \Phi 13 \times 0.5$
22	256544020702	垫圈 $\Phi 20 \times \Phi 13 \times 1$
23	910401300026	轴用弹性挡圈GB894.1-55
24	940200300029	复合滚轮 $\Phi 111.5-range=53-58$
25	255044020131	垫板
26	255044020125	调整垫 $\Phi 35 \times \Phi 16 \times 0.8$
26	255044020126	调整垫 $\Phi 35 \times \Phi 16 \times 0.5$
26	255044020127	调整垫 $\Phi 35 \times \Phi 16 \times 0.2$

256898501036货叉架(标准门架)/FORK ARM CARRIER(standard)

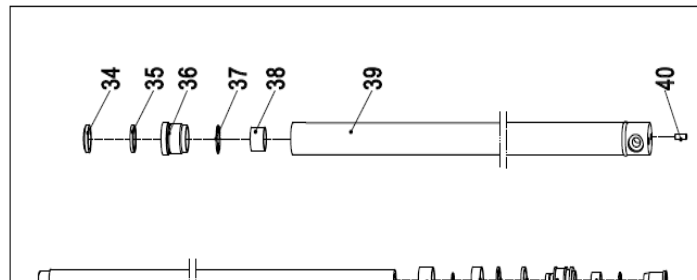


序号/NO	编码/SN	名称
1	253540510001	挡货架焊合(1100x1130)
2	910100300062	螺栓GB5783-M14x30-8.8
3	910400500009	弹簧垫圈GB93-14
4	910400100009	平垫圈GB97.1-14-200HV
5	256838011001	货叉架焊合(标准门架)
5	256838011051	货叉架焊合(标准门架35)
6	940200100020	主滚轮 $\Phi 119.2 \times \Phi 55 \times 34$
6	940200100021	主滚轮 $\Phi 119.6 \times \Phi 55 \times 34$

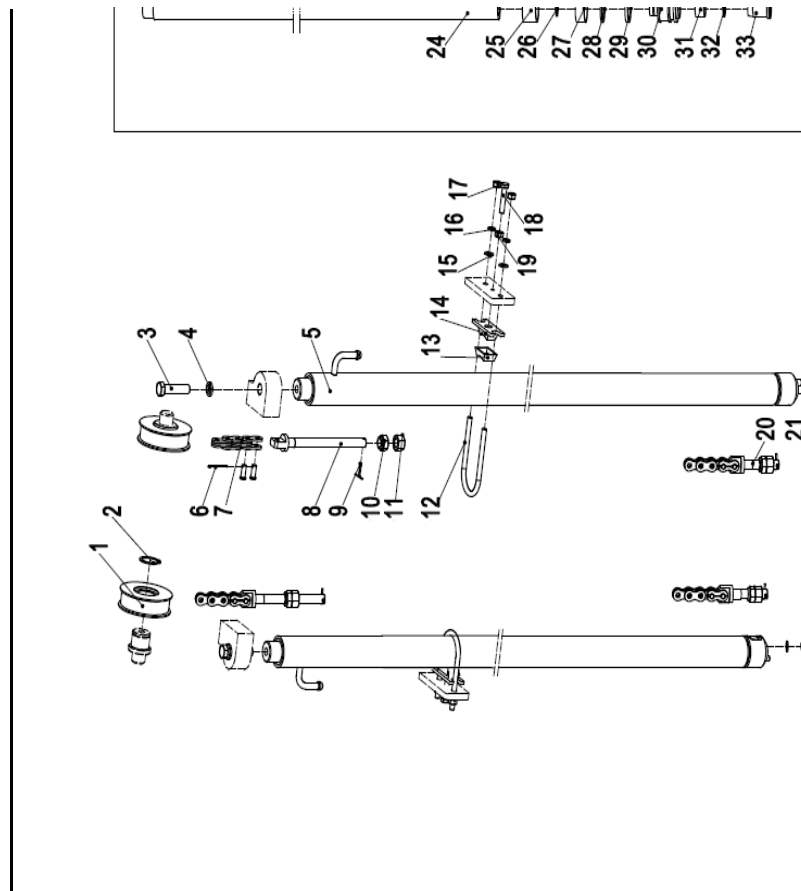


6	940200100022	主滚轮 $\Phi 120 \times \Phi 55 \times 34$
7	910401300026	轴用弹性挡圈GB894.1-55
8	910100300042	螺栓GB5783-M10x60-8.8
9	910400500007	弹簧垫圈GB93-10
10	940200200005	侧滚轮 $\Phi 42-CD=68$
11	255038020009	调整垫
12	255038020008	调整套

256898501037起升油缸（标准门架）/LIFTING CYLINDER (stan

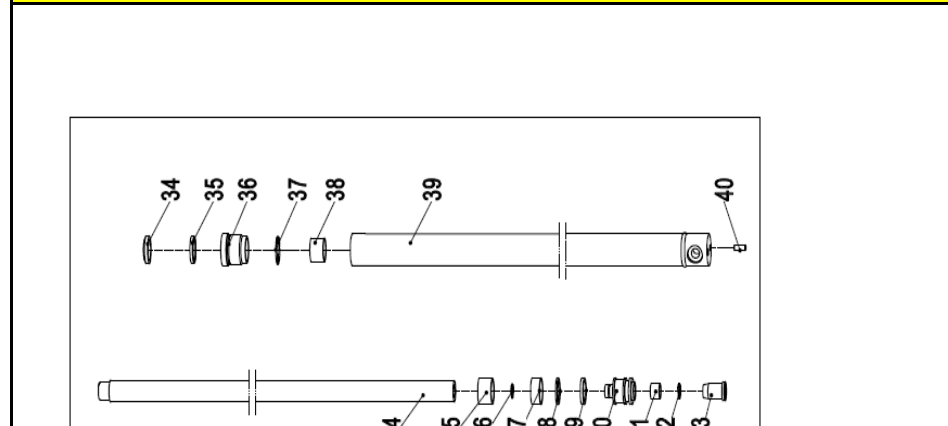


序号/NO	编码/SN	名称
1	940200500005	链轮轴承780708K- $\phi 110 \times \phi 40 \times 27$
2	910401300020	轴用弹性挡圈GB894.1-40
3	910400500010	弹簧垫圈GB93-16
4	910100400029	螺栓GB5786-M16x1.5x40-8.8
	256044016001	油缸(H=2000)
	256044016002	油缸(H=2500)
	256044016003	油缸(H=3000)
	256044016004	油缸(H=3300)
	256044016005	油缸(H=3500)

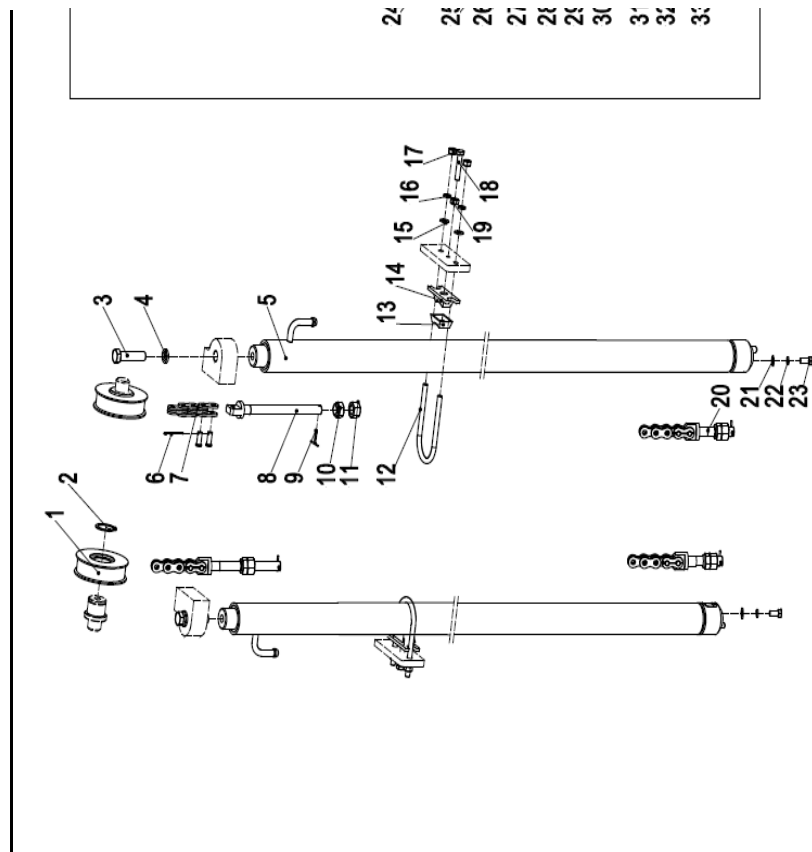


5	256044016006	油缸(H=3600)
	256044016007	油缸(H=3700)
	256044016008	油缸(H=4000)
	256044016009	油缸(H=4300)
	256044016010	油缸(H=4500)
	256044016011	油缸(H=5000)
	256044016012	油缸(H=5500)
	256044016013	油缸(H=6000)
6	▲	开口销2.5x40
7	▲	LH1623板式链
	▲	LH1634板式链
8	▲	长端接头
	▲	长端接头
9	▲	开口销3.2x30
10	▲	球面螺母M18x1.5
	▲	球面螺母M22x1.5
11	▲	螺母M18x1.5
	▲	螺母M20x1.5
12	255044020128	U形螺栓Φ68
13	255044020129	防护罩
14	255044020130	固定座(油缸)
15	910400100007	平垫圈GB97.1-16-200HV
16	910400500007	弹簧垫圈GB93-10

256898501037起升油缸(标准门架)/LIFTING PIPE (stand)

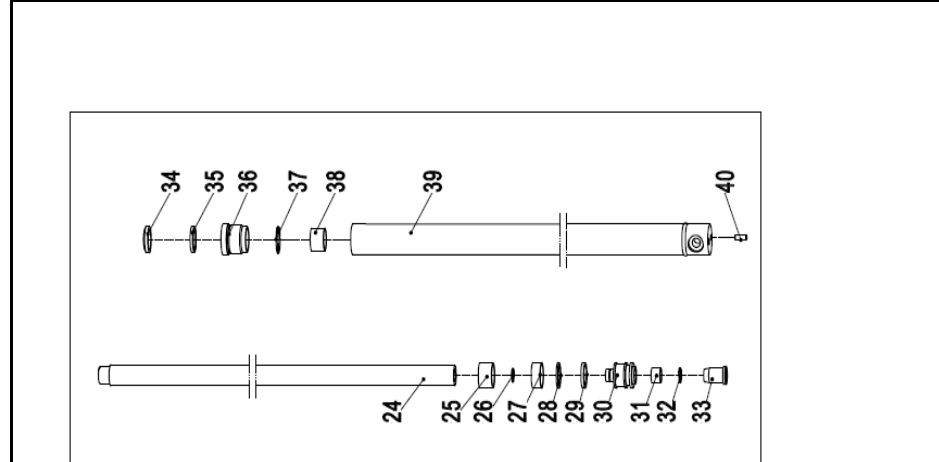


序号/NO	编码/SN	名称
17	910300200002	螺母GB6171-M10x1.25-10
18	910100300041	螺栓GB5783-M10x50-8.8
19	910300100007	螺母GB6170-M10-10
20	▲	短端接头
20	▲	短端接头
21	910400100008	平垫圈GB97.1-12-200HV
22	910400500008	弹簧垫圈GB93-12
23	910100400009	螺栓GB5786-M12x1.25x25-8.8
24	▲	活塞杆
25	▲	调整套40.5x49xL2

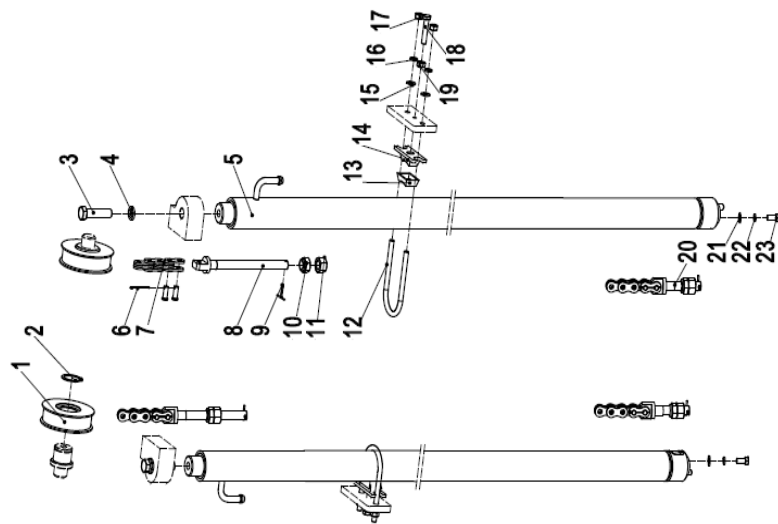


26	▲	钢丝挡圈
27	▲	支承环56x20x2.5
28	▲	挡片56x45x3
29	▲	孔用密封圈
30	▲	活塞
31	▲	铜套
32	▲	钢丝挡圈
33	▲	缓冲环
34	▲	防尘圈
35	▲	轴用密封圈
36	▲	导向套
37	▲	O型密封圈
38	▲	钢背轴承4530
39	▲	缸体
40	▲	圆柱销D10x26
41	256098510001	密封件修理包(标准门架起升缸)
A	255043510139	起升链条LH1623-79/H=3000
	255044510133	起升链条LH1623-59/H=2000
	255043510085	起升链条LH1623-69/H=2500
	255044510140	起升链条LH1623-85/H=3300
	255043510088	起升链条LH1623-89/H=3500
	255044010107	起升链条LH1623-91/H=3600

256898501037起升油缸（标准门架）/LIFTING PIPE（stand）

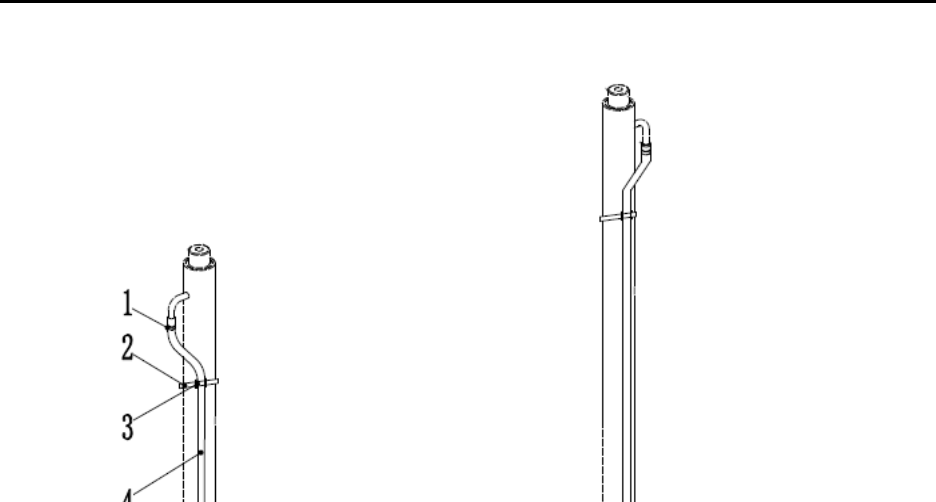


序号/NO	编码/SN	名称
A	253543510066	起升链条LH1623-93/H=3700
	255043510107	起升链条LH1623-101/H=4000
	253544510027	起升链条LH1623-107/H=4300
	255043510090	起升链条LH1623-111/H=4500
	253511010064	起升链条LH1623-121/H=5000
	256044014001	起升链条LH1623-133/H=5500
	256044014002	起升链条LH1623-143/H=6000
	263044510025	起升链条LH1634-59/H=2000
	256144014001	起升链条LH1634-69/H=2500
	263044010042	起升链条LH1634-79/H=3000
	263043510065	起升链条LH1634-85/H=3300



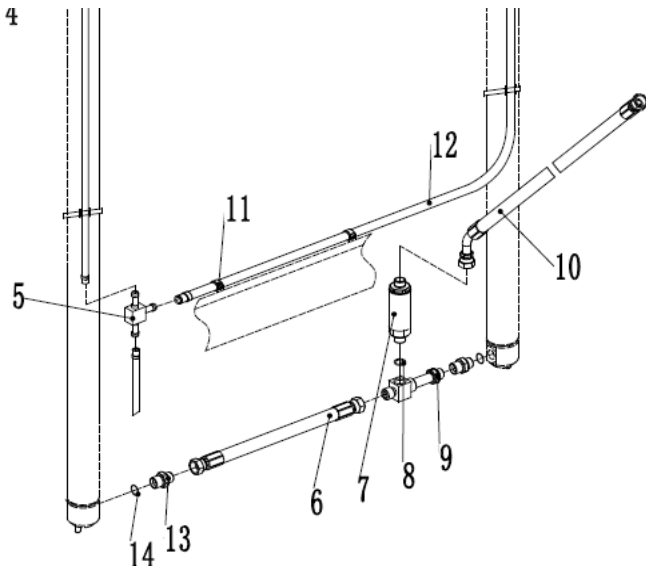
263044510006	起升链条LH1634-89/H=3500
254044010057	起升链条LH1634-91/H=3600
254044010058	起升链条LH1634-93/H=3700
254044510027	起升链条LH1634-101/H=4000
263044510008	起升链条LH1634-107/H=4300
254044010061	起升链条LH1634-111/H=4500
256144014002	起升链条LH1634-121/H=5000
256144014003	起升链条LH1634-133/H=5500
256144014004	起升链条LH1634-143/H=6000

256898501038门架起升管路（标准门架）/SINGLE ADDITIONAL TUBE



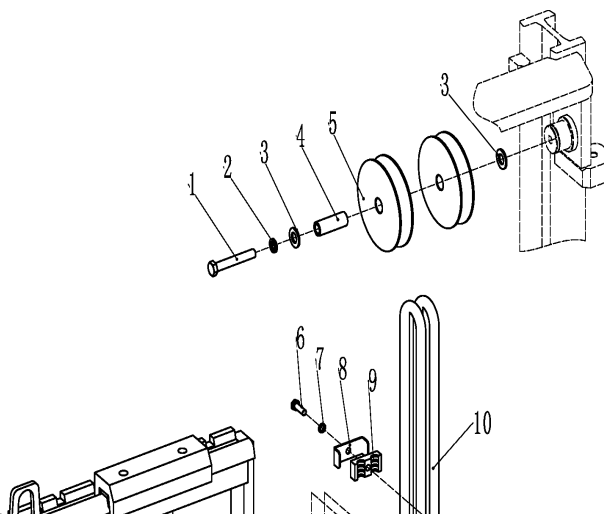
序号/NO	编码/SN	名称
1	255044020043	卡箍
2	921600400001	扎带4x250
3	255044020042	压板
4	▲	回油管1L=620
	▲	回油管1L=870
	▲	回油管1L=1120
	▲	回油管1L=1270
	▲	回油管1L=1370
	▲	回油管1L=1420
	▲	回油管1L=1470
	▲	回油管1L=1620
	▲	回油管1L=1770

4

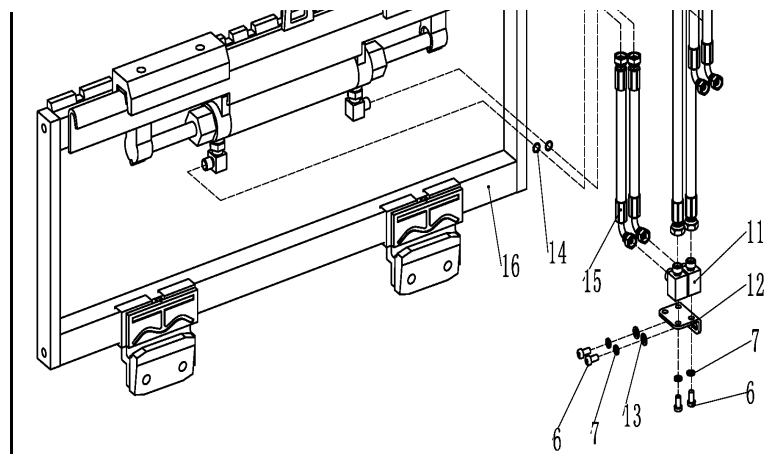


	▲	回油管1L=1920
	▲	回油管1L=2120
	▲	回油管1L=2370
	▲	回油管1L=2620
5	255044020118	接头(三通)
6	255044020150	液压管总成(直)13-L360-2SC-60°
7	950700300003	限速阀XSF-F16L-60
8	910800100040	O形圈-内24x2.4
9	255044010040	接头(三通)
10	255044020013	液压管总成(45°)13-L740-2SC-60°
11	921600400003	扎带(带扣)P-N156-00646
12	▲	回油管2
13	910800100003	O形圈-内17x2.65
14	255044020122	接头(直)12-M20x1.5-M22x1.5-60°

256898501039单附加管路(标准门架)DOUBLE ADDITIONAL TUBE(s)



序号/NO	编码/SN	名称
1	910100100056	螺栓GB5782-M12x90-8.8
2	910400500008	弹簧垫圈GB93-12
3	910400100008	平垫圈GB97.1-12-200HV
4	255030520022	衬套Φ22xΦ13x56
5	255030520021	滑轮Φ110x27(单槽)
6	910200200059	螺钉GB70.1-M8x30-8.8
7	910400500006	弹簧垫圈GB93-8
8	255028520034	胶管固定块
9	255028520035	管夹安装板
	256028020001	液压管总成(直)8-L4500-1SC-60°
	254131020010	液压管总成(直)8-L3400-1SC-60°
	256028020002	液压管总成(直)8-L3850-1SC-60°
	256028020003	液压管总成(直)8-L4700-1SC-60°



10	256028020004	液压管总成(直)8-L4850-1SC-60°
	256028020005	液压管总成(直)8-L5050-1SC-60°
	256028020006	液压管总成(直)8-L5500-1SC-60°
	256028020007	液压管总成(直)8-L5800-1SC-60°
	256028020008	液压管总成(直)8-L5950-1SC-60°
	256028020009	液压管总成(直)8-L6600-1SC-60°
	256028020010	液压管总成(直)8-L7100-1SC-60°
	256028020011	液压管总成(直)8-L7600-1SC-60°
11	255029020024	接头(锁定弯)8-2xM16x1.5-60°
12	254127520001	安装板
13	910400100006	平垫圈GB97.1-8-200HV
14	910800100001	O形圈-内9.5x1.8
15	255042520101	液压管总成(90°)8-L500-1SC-60°-0°
16	256042510004	外置侧移器1100(LH)
16	253542510001	外置侧移器1100(LD)
16	256042510002	侧移器总成(卡斯卡特)

Name	数量/QTY	备注/Remark	
Drive axle(KD)	1		1
Seal washer	1		2
Gear box (ZN)	1	选装/Optional	3
Gear box (ZC)	1	选装/Optional	4
Dowel pin GB119.2-10x24	1		5
Washer GB97.1-12-200HV	12		6
Washer GB93-12	12		7
Bolt GB5786-M12x1.5x45-8.8	12		8
Nut GB6178-M20-8	1		9
Washer GB97.1-14-200HV	5		10
Washer GB93-14	5		11
Bolt GB5785-M14x1.5x160-8.8	5		12
Split pin GB91-4x40	1		13
Washer GB93-20	9		14
Washer GB97.1-20-200HV	1		15
BoltGB31.1-M20x90-8.8	1		16
O ring 90x2.65	1		17
Motor (WN)	1		18
Sensor (WN)	1		19
			20
			21
			22
			23
			24
			25
			26
			27
			28
			29
			30
			31
			32

Name	数量/QTY	备注/Remark
Driving axle housing	1	
Drum brake	2	
Hub	2	
Large oil seal ring	2	
Seal ring100x130x12	2	
Bearing30214	2	
Bearing32012	2	
O-ring 65X3.1	2	
Small oil seal ring	2	
Seal ring 75x100x2	2	
Round nut M60X2	4	
Lock washer60	2	
Half shaft pad	2	
Half shaft	2	
Half shaft bolt	24	
Hub bolt	12	
Hub nut	12	
Nut M20X1.5	12	
Left brake	1	
Right brake	1	
Pug ZG1/2	3	
Vent plug	1	
Pin	1	
Brake positioning bolt	4	
Brake bolt	12	

Name	数量/QTY	备注/Remark
Differential assembly HDCS35IIIA.901	1	
Bolt YDS30.089	4	
Heavy-duty spring washer	4	
bearing pedestal YDS30.072	2	
Bearing 32207	2	
Adjustable pad YDS30.090	3/4	
O-ring 73×3.1 GB1235	1	
Bolt GB5783-M10×25	5	
Spring Washer GB93-10	19	
Bearing cap YDS30.168	1	
Box HDCS35IIIA.001	1	
Bearing GB/T276-6206	1	
Pin GB/T119.1-10×20	2	
Bearing GB/T276-6208	1	
Bearing GB/T283-NJ2206E	1	
Input axis HDCS35IIIA.003	1	
Bearing GB/T276-6209	1	
Double gear assembly HDCS35IIIA.803	1	
Bearing 6307 GB/T 276	1	
Paper pad HDCS35IIIA.010	1	
Case cover HDCS35IIIA.002	1	
Bolt GB5782-M10×90	10	
Bolt GB5783-M10×16	2	
Link stopper HDCS25.008	1	
Bolt GB5783-M10×35	2	
O-ring 35×3.1 GB1235	2	
Intermediate shaft HDCS35IIIA.009	1	
O-ring 25×2.65 GB/T3452.1	2	
Gear shaft components HDCS35IIIA.804	1	

Name	数量/QTY	备注/Remark
Bolt M10×25	4	
Spring washer 10	20	
Bearing cap Y30H-09001	1	
O-ring 75×3.1	1	
Gear shaft gasket Y30H-09002A	AR	
Gear shaft gasket Y30H-09002B	AR	
Gear shaft gasket Y30H-09002C	AR	
Gear shaft gasketY30H-09002D	AR	
Body components HDCSB30-01200	1	
Lock plate of bearing seat YQX25-01008	4	
Bearing 32207	2	
Bearing 6206	2	
Axis HDCSB30-04000-1	1	
Duplicate gear HDCSB30-03000-1	1	
Bolt M10X40	2	
Bolt M10X100	12	
Bolt M10X16	2	
Link stopper HDCS25-03001	1	
Case cover HDCSB30-01002	1	
Bearing 6306	1	
O-ring 25X2.65	2	
Axis HDCSB30-03003	1	
Bearing 6208	1	
Seal cover HDCSB30-02002	2	
Input axis HDCSB30-02001-1	1	
Bearing 6209	1	
Pin 10X24	2	

N)		
Name	数量/QTY	备注/Remark
Bearing 6213GB/T 276	2	
Bolt M14*1.5*60GB/T 16674.2	12	
Gear ringHDCS30-05001	1	
Right differential housing HDCS30-05003	1	
Half shaft washerY30H-10006	2	
Axle shaft gearY30H-10007	2	
Universal joint pin Y30H-10003	1	
Planetary gear Y30H-10005	4	
Planetary washer Y30H-10004	4	
Left differential housingHDCS30-05002	1	

Name	数量/QTY	备注/Remark
Tire assembly 28X9-15-14PR (pneumatic)	2	
Tire assembly 28X9-15 (soild)	2	选装/Optional
Tire assembly 28X9-15 (environmentally)	2	选装/Optional
Tire 28X9-15-14PR (pneumatic)	2	
Tire 28X9-15 (soild)	2	选装/Optional
Tire 28X9-15 (environmentally)	2	选装/Optional
Rim assembly (7.00T-15)	2	

Name	数量/QTY	备注/Remark
Tire assembly 6.50-10-10PR(pneumatic)	2	
Tire assembly 6.50-10(soild)	2	
Tire assembly 6.50-10(environmentally)	2	选装/Optional
Nut GB6171-M12x1.25-10	16	
Spring washerGB93-12	16	
Outer assembly 4.33R	2	序号3.5总成提供
Tire 6.50-10-10PR(pneumatic)	2	
Tire 6.50-10(solid)	2	
Tire 6.50-10(environmentally)	2	
Rimassembly 4.33 R	2	
Rim bolt M12x1.25x26	16	

Name	数量/QTY	备注/Remark
Bolt GB5783 M10x30-8.8	2	
Gasket GB97.1-10-200HV	6	
Spring washer GB93-10	6	
Gear pump	1	
Bolt GB5782 M10x55-8.8	4	
Gasket Φ40xΦ11x4	4	
Bushing Φ13XΦ10.5x32	4	
Damping pad	8	
Motor (AC)	1	
Encoder (WN)	1	

TION

Name	数量/QTY	备注/Remark
Grease nipple	1	
Bracket	1	
Washer GB93-8	1	
Bolt GB5783-M8x16-8.8	1	
Hose clamp QC/T390-(11-14)	2	
Connecting pipe	1	
Bolt GB5783-M5x12-8.8	1	
Washer GB93-5	1	
Washer GB97.1-5-200HV	1	
Axle $\Phi 16 \times 135$	1	
Bolt GB5783-M10x40-8.8	4	
Washer GB93-10	6	
Washer GB97.1-10-200HV	6	
Foot brake holder welding	1	
Bushing $\Phi 16 \times \Phi 18 \times 15$ -SF-1	2	
Pedal weiding	1	
Damping pad	1	
Split pin GB91-2x20	1	
Spring	1	
Grease nipple JB7940.1-M10x1	1	
Pedal (rubber)	1	
Bolt GB5782-M8x45-8.8	1	
Nut GB6170-M8-10	1	
Bushing $\Phi 10 \times \Phi 12 \times 8$ -SF-1	1	
Brake pump assembly	1	
Bolt GB5783-M10x35-8.8	2	
NutGB6170-M10-10	2	
Brake steel pipe welding	1	
Brake steel pipe welding	1	

TION

Name	数量/QTY	备注/Remark
Bolt GB5783-M10x20-8.8	2	
Spring washer GB93-10	2	
Washer GB97.1-10-200HV	2	
Backing plate (Parking brake)	1	
Parking Brake Assembly	1	
Washer GB97.1-6-200HV	4	
Spring washer GB93-6	4	
Bolt GB5783-M6x16-8.8	4	

LATION		
Name	数量/QTY	备注/Remark
The adjustable handle	1	
Elastic cylinder pin GB879.1-4x30	1	
Clamp holder screw sets	1	
Gasket $\Phi 20 \times \Phi 12 \times 8$	1	
Locking block	1	
Nut GB6172.1-M12-05	1	
Bolt GB5783 M12x70-8.8	1	
Steering string assembly	1	
The steering wheel	1	
Pin GB882-6x26x1.6	1	
Cotter pin GB91-1.6x10	1	
The fixed seat	1	
Adjust rod welding	1	
Adjust the screw	1	
Oil cup JB7940.1-M10x1	1	
Composite set (shoulder) $\Phi 16 \times \Phi 18 \times 16$ -SF-1	2	
With trunnion $\Phi 16 \times 135$	1	
Washer GB97.1-6-200HV	1	
Spring washer GB93-6	1	
Bolt GB5783 M6x12-8.8	1	
Bolt GB5783 M10x25-8.8	4	
Spring washer gb93-10	4	
Washer GB97.1-10-200HV	4	
Bracket welded	1	
Steering SCU51/100-FS	1	

LATION

Name	数量/QTY	备注/Remark
30Q steering axle	1	
Left knuckle Z30KD011G	1	
Turn to the bridge ZDS/K30-35D-03	1	
Steering cylinder LGZN030K-0100	1	
Spring washer 16	4	
Bolt M16X65	4	
Bush Z30KD024	8	
Knuckle bearing Z30KD023	4	
Oil cap M6	2	
bolt M8X18	4	
Spring washer 8	4	
Link pin Z30KD025	4	
Link Z30KD002	2	
Pin Z30KD004G	2	
Kingpin ZBYD27KD010G	2	
O-ring 25X2.65	2	
Shield block ZBD20KD011G	2	
Dustband Z30KD006G	2	
Bearing 33206	4	
Composite dust ring Z30KD009G	2	
Bush ZDS/K30-35KD-05	2	
Pin lock nut Z30KD010G	2	
Pin 3.2X50	2	
Right knuckle Z30KD007G	1	
Rotary shaft lip seals FB85X110X12	2	
Bearing 30211E	2	
Hub bolt Z30KD013	16	
Steering wheel hub Z30KD011	16	
Wheel hub nut Z30KD012	2	
Bearing 30207	2	
Washer30	2	
Nut Z30KD009	2	

Name	数量/QTY	备注/Remark
Sealing part maintenance package (steering c	1	
Piston rod assembly	1	
Cylinder cover	2	
Dust ring	2	
U rin	2	
O-ring	2	
O-ring	1	
Support ring	1	
Cylinder assembly	1	
Bearing	2	

Name	数量/QTY	备注/Remark
Welding of box cover	1	
Screw GB818 M4x10-4.8	2	
Fixed plate	1	
The shake handshandle	1	
Gas spring 200N (D620)	1	
Nut GB889.1-M8-10	2	
Seat BF1-1BC (STD.)	1	
Seat (comfort)	1	选装/Optional
Seat (Vibration)	1	选装/Optional
Bearing GB9163-GE12E	2	
Hinge bracket (right)	1	
Bolt	2	
Hinge bracket (left)	1	
Wire plate	2	
Adjust the gasket	2	
Washer GB97.1-8-200HV	4	
Spring washer GB93-8	4	
Bolt GB5783 M8x30-8.8	4	
Air spring 500N(D620)- self locking	1	
Nut GB889.1-M6-10	2	
The shake handshandle	1	
Screw GB818-M6x20-4.8	2	
The lid lock	1	
Screw GB70.1 M5x10-4.8	4	
To protect the coil	1	

Name	数量/QTY	备注/Remark
Bolt	2	
Nut M8	2	
Side plate	1	
Hanger	1	
Washer GB97.1-6-200HV	6	
Spring washer GB93-6	8	
Screw GB70.1 M6x16-8.8	4	

ION

Name	数量/QTY	备注/Remark
Nut M6	6	
Cover assembly	1	
Washer GB97.1-6-200HV	4	
Screw M6x12	6	
Instrument mask	1	
Cover	1	
Cover	1	
Cover	1	
Cover assembly	1	

ING		
Name	数量/QTY	备注/Remark
Balance weight 35Q	1	选装
Balance weight 30Q	1	
lift hole cover	1	
Bolt GB5782 M24x120-8.8	1	
Spring washer GB93-24	1	
Gasket Φ60XΦ25X8	2	选装
Adjust cushion	2	
Bolt GB5782 M24x120-8.8	2	
Washer GB97.1-6-200HV	2	
Spring washer GB93-6	2	

Name	数量/QTY	备注/Remark
Hydraulic Tube Assembly (Extraordinary)8-L25	1	
Hydraulic Tube Assembly (Extraordinary)8-L27	1	
Hydraulic Tube Assembly (90°)6-L750-1SC-60°	1	
Connector (straight)6-G1/4 M14X1.5-60 °	3	
O-ring - inside 11.2x2.65	4	
Hydraulic Tube Assembly (90°)6-L700-1SC-60°	1	
Rubber hose (return oil)	1	
Hose hoops QC/T390 - - 38 (34)	4	
Return oil hose 23X5	2560	
Hose hoops QC/T390 - (22-26),	2	
Rubber hose (oil absorption)	1	
Hose hoops QC/T390 - (40-45)	2	
Hydraulic Tube Assembly (135°)6-L450-1SC-60	1	
Hydraulic Tube Assembly (Straight)6-L600-1SC	1	
Connector (tee) 7-2XM14X1.5 - M16X1.5 -60°	2	
Hydraulic Tube Assembly (90°)6-L1320-1SC-60	1	
Hydraulic Tube Assembly (90°)8-L1320-1SC-60	1	
Connector (straight) 8-2XM16X1.5-60 °	2	
O-ring - inside 13.2x2.65	2	
Connector (lock bend)6-G1/4 M14X1.5 -60°	2	
Connector (lock bend)11-M20x1.5-0	1	
Connector (lock bend) 10-M20X1.5 - M16X1.5 -	3	
Connector (lock bend)12-G1/2- M22X1.5 -60°	1	
The gear pump	1	
Joint (to bend) 25 - G1 - Φ 32	1	
Connector (straight) 12-2XM22X1.5 -60°	1	
Connector (lock bend) 6-M12X1.5 - M14X1.5 -6	1	
Connector (lock bend)12-M20x1.5-M22x1.5-60°	1	
Connector (straight) 8-M20X1.5 - M16X1.5 -60	1	
Hydraulic Tube Assembly (135°)13-L850-2SC-6	1	

CONTROL (TWO)		
Name	数量/QTY	备注/Remark
Multiple valve (double)	1	
Bolt GB5786-M10x1.25x40-8.8	4	
Spring washer GB93-10	8	
Washer GB97.1-10-200HV	12	
Pin B4.75x20-c1B	4	
Cotter pin GB91-2x12	4	
Support (stem)	1	
Bolt GB5783 M10x30-8.8	4	
Nut GB6170-M10-10	4	
With trunnion Φ 16x168	1	
Spring washer GB93-6	1	
Screw GB70.1 M6x10-8.8	1	
Handle ball(lift)	1	
Handle ball(tilt)	1	
Joystick welding(lifting)	1	
Joystick welding(tilt)	1	
Composite set Φ 16x Φ 18x15-SF-1	4	
Connecting rod	2	
Nut GB6170 M8-10	2	
joint	2	
Bracket (travel switch)	2	
Shaft sleeve Φ 29x Φ 16x38	2	

CONTROL (THREE)

Name	数量/QTY	备注/Remark
Multiple valve(triple)	1	
Bolt GB5786-M10x1.25x40-8.8	4	
Spring washer GB93-10	8	
Washer GB97.1-10-200HV	12	
Pin B4.75x20-c1B	6	
Cotter pin GB91-2x12	6	
Support (stem)	1	
Bolt GB5783 M10x30-8.8	4	
Nut GB6170-M10-10	4	
With trunnion $\Phi 16 \times 168$	1	
Spring washer GB93-6	1	
Screw GB70.1 M6x10-8.8	1	
Handle ball(lift)	1	
Handle ball(tilt)	1	
Handle ball(belonging to 1)	1	
Joystick welding(lifting)	1	
Joystick welding(tilt)	1	
Joystick welding(tool)	1	
Composite set $\Phi 16 \times \Phi 18 \times 15$ -SF-1	6	
Connecting rod	3	
Nut GB6170 M8-10	3	
joint	3	
Bracket (travel switch)	3	
Joint (straight) 8-M20x1.5-M16x1.5-60°	2	
Shaft sleeve $\Phi 16 \times \Phi 29 \times 38$	1	

CONTROL (TOUR)		
Name	数量/QTY	备注/Remark
Multiway valve (quadruple)	1	
Bolt GB5786-M10x1.25x40-8.8	4	
Spring washer GB93-10	8	
Washer GB97.1-10-200HV	12	
Pin B4.75x20-c1B	8	
Cotter pin GB91-2x12	8	
Support (stem)	1	
Bolt GB5783 M10x30-8.8	4	
Nut GB6170-M10-10	4	
With trunnion $\Phi 16 \times 168$	1	
Spring washer GB93-6	1	
Screw GB70.1 M6x10-8.8	1	
Handle ball (lift)	1	
Handle ball (tilt)	1	
Handle ball (belonging to1)	1	
Handball (belonging to 2)	1	
Joystick welding (lifting)	1	
Joystick welding (tilt)	1	
Joystick welding (tool 1)	1	
Joystick welding (kit 2)	1	
Composite set $\Phi 16 \times \Phi 18 \times 15$ -SF-1	8	
Connecting rod	4	
Nut GB6170 M8-10	4	
joint	4	
Bracket (travel switch)	4	
Joint (straight)8-M20x1.5-M16x1.5-60°	4	

Name	数量/QTY	备注/Remark
Frame welded	1	
Bolt GB5785-M16x1.5x70-8.8	4	
Spring washer GB93-16	4	
Support cover	2	
Screw GB70.2 M8x16-8.8	2	
Leaf spring nut M8	2	
Side door welding	1	
Mat I	1	
Screw GB70.1 M12x60-8.8	2	
Large washer GB96.1-12-200HV	4	
Spring washer GB93-10	4	
Bolt GB5783-M12x30-8.8	4	
Battery holder	2	
Damping pad	4	
Welding of cover plate (right)	1	
The meter stand is welded together	1	
Large washer GB96.1-10-200HV	2	
Spring washer GB93-10	2	
Bolt GB5783-M10x30-8.8	2	
Leaf spring nut M6	4	
Welding of cover plate(left)	1	
Screw GB70.2 M6x16-8.8	4	

Name	数量/QTY	备注/Remark
Screw GB70.1 M12x30-8.8	8	
Spring washer GB93-12	8	
The flat washer GB97.1-12-200HV	4	
The top guard is welded together	1	
Protective cover 1	1	
Protective tape	4	
Protective tape	2	
Back handle	1	选装
Spring washer GB93-6	2	
Screw GB70.1 M6x20-8.8	2	
Protective cover 2	1	
Rearview mirror	3	
Support	2	
Big washer GB96.1-12-200HV	4	
Screw GB70.1 M8x20-8.8	2	
Spring washer GB93-8	2	
Handle	1	选装
Nut GB889.1-M8-10	4	
Bolt GB5783 M12x20-8.8	4	
Protective tape	2	
Cover 30	4	

Name	数量/QTY	备注/Remark
Buzzer(DJB-24B)	1	
Integrated electrical box	1	
Controller Assembly(ACM-4P30Q)	1	ACM系统
Controller Assembly(Curtis-4P30Q)	1	Curtis系统
Wire Harness(ACM-4P30Q)	1	ACM系统
Wire Harness(Curtis-4P30Q)	1	Curtis系统
Accelerator(JCTA-1801E)	1	ACM系统
Accelerator(FZ3-532-133)	1	Curtis系统
Pedal Switch(JK231)	1	
Horn(125-DC24V)	1	
USB	1	Opiton
Warp Switch(YB-nuoli-003)	1	
Combination Switch	1	
KEYA	1	
Display(D28C-CC)	1	ACM系统
Display(3401T-12-96V)	1	Curtis系统
Emergency StopSwitch(LAY39-01MJ-RC)	1	
DC-DC80V/24V	1	
Micro Switch(RZ-15GQ22-B3)	4	
Grouped Lamps PDL-LXHW-2	2	
Head Lamp PDL-LXZM-1	3	
Blue Lamp A-LJD-A1	2	Opiton
Caution Light WSM-NL01	1	
Width Lamp PDL-LXXD-1	2	

Name	数量/QTY	备注/Remark
Contactora (DC80V-SW200-583)	1	
ControllerACM80350	1	运用于牵引
ControllerACM80350	1	运用于泵

Name	数量/QTY	备注/Remark
Contactor (DC80V-SW200-583)	1	
Controller1234SE-6321	1	运用于牵引
Controller1234SE-6321	1	运用于泵

Name	数量/QTY	备注/Remark
Lithium battery80V-200 (JN-B)	1	
Lithium battery80V-300 (JN-B)	1	

Lithium battery80V-400(JN-B)	1	
Li Charger 80V65A(three phase 380V)	1	酉記200Ah
Li Charger 80V65A(three phase 380V-415V)	1	酉記200Ah
Li Charger 80V65A(three phase 220V-240V)	1	酉記200Ah
Li Charger 80V65A(three phase 460V-480V)	1	酉記200Ah
Li Charger 80V100A(three phase 380V)	1	酉記200/300Ah
Li Charger 80V100A(three phase 380V-415V)	1	酉記200/300Ah
Li Charger 80V100A(three phase 220V-240V)	1	酉記200/300Ah
Li Charger 80V100A(three phase 460V-480V)	1	酉記200/300Ah
Li Charger 80V150A(three phase 380V)	1	酉記300/400Ah
Li Charger 80V150A(three phase 380V-415V)	1	酉記300/400Ah
Li Charger 80V150A(three phase 220V-240V)	1	酉記300/400Ah
Li Charger 80V150A(three phase 460V-480V)	1	酉記300/400Ah
Li Charger 80V200A(three phase 380V)	1	酉記400Ah
Li Charger 80V200A(three phase 380V-415V)	1	酉記400Ah
Li Charger 80V200A(three phase 220V-240V)	1	酉記400Ah
Li Charger 80V200A(three phase 460V-480V)	1	酉記400Ah
REMA Charging Plugin Assy (Female 320A)	1	
Module(GF-30Q)	1	
DC/DC converter	1	
BMS (80/200-30Q)	1	200Ah用
BMS (80/300-30Q)	1	300Ah用
BMS (80/400-30Q)	1	400Ah用
Charging DC contactor	1	
Discharging DC contactor	1	
Current sensor	1	

Name	数量/QTY	备注/Remark
Fork 125x45x1070	2	
Fork 125x45x1150	2	
Fork 125x45x1220	2	

Fork 125x45x1370	2	30Q包含/Inc. 1-2
Fork 125x45x1520	2	
Fork 125x45x1970	2	
Fork 125x45x1820	2	
Fork 125x45x1670	2	
Fork 125x50x1070	2	35Q包含/Inc. 1-2
Fork 125x50x1150	2	
Fork 125x50x1220	2	
Fork 125x50x1370	2	
Fork 125x50x1520	2	
Fork 125x50x1800	2	
Fork 125x50x1970	2	
Fork 125x50x1670	2	
货叉体	2	
提销总成	2	

Name	数量/QTY	备注/Remark
Oil cylinder (TL) $\Phi 80 \times \Phi 35 \times 118$ (6/10)	1	H \leq 3700, Left
Oil cylinder (TL) $\Phi 80 \times \Phi 35 \times 88.5$ (6/6)	1	3700<H \leq 5000, Left
Oil cylinder (TL) $\Phi 80 \times \Phi 35 \times 67$ (3/6)	1	5000<H, Left
Oil cylinder (TR) $\Phi 80 \times \Phi 35 \times 118$ (6/10)	1	H \leq 3700, Right

Oil cylinder (TR) $\Phi 80 \times \Phi 35 \times 88.5$ (6/6)	1	3700 < H ≤ 5000, Right
Oil cylinder (TR) $\Phi 80 \times \Phi 35 \times 67$ (3/6)	1	5000 < H, Right
Seal kits (tilted cylinder)	2	
Grease mouth Z1/8	2	
Earring	2	
Bearing GE30ES	2	
Circlip 47	2	
Nut M14	2	
Washer 14	2	
Bolt M14x55	2	
Piston body assembly	2	
Yx seal ring	2	
Support ring	2	
Dust ring	2	
Circlip 52	2	
Circlip	2	
Catch 48x30x3	2	
Useal ring 48x30x10	2	
Guide sleeve	2	
O seal ring 63x3.1	2	
Bearing 3025	2	
Cylinder barrel assembly	2	
Bearing 3040	2	

34

Name	数量/QTY	备注/Remark
Inner mast (2000)	1	30Q
Inner mast (2500)	1	30Q
Inner mast (2700)	1	30Q
Inner mast (3000)	1	30Q
Inner mast (3300)	1	30Q

Inner mast (3500)	1	30Q
Inner mast (3700)	1	30Q
Inner mast (4000)	1	30Q
Inner mast (4300)	1	30Q
Inner mast (4500)	1	30Q
Inner mast (5000)	1	30Q
Inner mast (5500)	1	30Q
Inner mast (6000)	1	30Q
Inner mast (2000)	1	35Q
Inner mast (2500)	1	35Q
Inner mast (2700)	1	35Q
Inner mast (3000)	1	35Q
Inner mast (3300)	1	35Q
Inner mast (3500)	1	35Q
Inner mast (3700)	1	35Q
Inner mast (4000)	1	35Q
Inner mast (4300)	1	35Q
Inner mast (4500)	1	35Q
Inner mast (5000)	1	35Q
Inner mast (5500)	1	35Q
Inner mast (6000)	1	35Q
Adjusting sleeve	4	
Adjustable pad	4	
Side roller $\Phi 42$ - CD = 68	2	
Spring washer GB93-10	4	
Bolt GB5783 M10x40-8.8	4	
Roller $\Phi 119.2$ -range=59.5-64.5	2	

35

Name	数量/QTY	备注/Remark
Roller $\Phi 119.2$ -range=59.5-64.5	2	
Roller $\Phi 119.2$ -range=59.5-64.5	2	
Elastic retaining ring GB894.1-55 for shaft	4	
Outer mast (2000)	1	30Q
Outer mast (2500)	1	30Q
Outer mast (3000)	1	30Q

Outer mast (3300)	1	30Q
Outer mast (3500)	1	30Q
Outer mast (3600)	1	30Q
Outer mast (3600)	1	30Q
Outer mast (4000)	1	30Q
Outer mast (4300)	1	30Q
Outer mast (4500)	1	30Q
Outer mast (5000)	1	30Q
Outer mast (5500)	1	30Q
Outer mast (6000)	1	30Q
Outer mast (2000)	1	35Q
Outer mast (2500)	1	35Q
Outer mast (3000)	1	35Q
Outer mast (3300)	1	35Q
Outer mast (3500)	1	35Q
Outer mast (3600)	1	35Q
Outer mast (3600)	1	35Q
Outer mast (4000)	1	35Q
Outer mast (4300)	1	35Q
Outer mast (4500)	1	35Q
Outer mast (5000)	1	35Q
Outer mast (5500)	1	35Q
Outer mast (6000)	1	35Q
Bearing bush	2	
Bearing cover	2	
Washer GB93-16	4	

36

Name	数量/QTY	备注/Remark
Bolt GB5785-M16x1.5x70-8.8		
Grease nipple JB7940.1-M10x1		
Bolt GB5783-M10x20-8.8		
Washer GB97.1-10-200HV		
Washer GB97.1-10-200HV		
Axle Φ30x82		
Bolt GB5783-M12x30-8.8		

Washer GB93-12		
Side roller Φ 87 - CD = 55		
Gasket Φ Φ 13 x 20 x0.5		
Gasket Φ Φ 13 x 20 x1		
Elastic retaining ring GB894.1-55		
The composite roller Φ 111.5 - range = 53-58		
Base plate		
Adjusting pad Φ 35x Φ 16x0.8		
Adjusting pad Φ 35 Φ 16x0.5		
Adjusting pad Φ 35x Φ 16x0.2		

37

mast)		
Name	数量/QTY	备注/Remark
Load backrest welding	1	
Bolt GB5783-M14x30-8.8	4	
Washer GB93-14	4	
Washer GB97.1-14-200HV	4	
Fork carrier weldind (standard mast)	1	30Q
Fork carrier weldind (standard mast 35)	1	35Q
Main roller ϕ 119.2x ϕ 55x34	6	选装
Main roller ϕ 119.6x ϕ 55x34	6	选装

Main roller ϕ 120x ϕ 55x34	6	选装
Circlip GB894.1-55	6	
Bolt GB5783-M10x60-8.8	8	
Washer GB93-10	8	
Side roller Φ 42 - CD = 68	4	
Adjustable pad	24	
Adjusting sleeve	8	

d mast)		
Name	数量/QTY	备注/Remark
Chain wheel bearing780708K- ϕ 110x ϕ 40x27	2	
Circlip GB894.1-40	2	
Washer GB93-16	4	
Bolt GB5786-M16x1.5x40-8.8	2	
Cylinder Φ 56x Φ 45x995(H=2000)	2	
Cylinder Φ 56x Φ 45x1245(H=2500)	2	
Cylinder Φ 56x Φ 45x1495(H=3000)	2	
Cylinder Φ 56x Φ 45x1645(H=3300)	2	
Cylinder Φ 56x Φ 45x1745(H=3500)	2	

Cylinder Φ56xΦ45x1825(H=3600)	2	包含/Inc. 24-41
Cylinder Φ56xΦ45x1845(H=3700)	2	
Cylinder Φ56xΦ45x1995(H=4000)	2	
Cylinder Φ56xΦ45x2120(H=4300)	2	
Cylinder Φ56xΦ45x2245(H=4500)	2	
Cylinder Φ56xΦ45x2495(H=5000)	2	
Cylinder Φ56xΦ45x2745(H=5500)	2	
Cylinder Φ56xΦ45x2995(H=6000)	2	
Split pin 2.5x40	2	
LH1623 chain	2	30Q
LH1634 chain	2	35Q
Joint	2	30Q
Joint	2	35Q
Split pin 3.2x30	2	
Nut M18x1.5	2	30Q
Nut M22x1.5	2	35Q
Nut M18x1.5	2	30Q
Nut M20x1.5	2	35Q
Fixing ring	2	
Rubber bushing	2	
Fixing seat	2	
Washer GB97.1-16-200HV	4	
Washer GB93-10	4	

39

mast)		
Name	数量/QTY	备注/Remark
Nut GB6171-M10x1.25-10	4	
Bolt GB5783-M10x50-8.8	2	
Nut GB6170-M10-10	2	
Joint	2	30Q
Joint	2	35Q
Washer GB97.1-12-200HV	2	
Washer GB93-12	2	
Bolt GB5786-M12x1.25x25-8.8	2	
Piston rod	1	
Adjusting bushing 40.5x49xL2	1	

Circlip	1	
Bearing 50x20x2.5	1	
Catch 50x40x3	1	
Seal ring 50x40x6	1	
Piston rod	1	
Copper bushing	1	
Circlip	1	
Buffering ring	1	
Dust ringDKB40x52x7/10	1	
Seal ring 40x50x6	1	
Guide sleeve	1	
O ring 49.7x2.4	1	
Bearing 4030	1	
Cylinder	1	
Dowel pin	1	
Seal kits(standard mast lifting cylinder)	2	世宮/ Inc. 27 29 34 35 37
Lifting chain LH1623-77	2	30Q
Lifting chain LH1623-57	2	30Q
Lifting chain LH1623-67	2	30Q
Lifting chain LH1623-83	2	30Q
Lifting chain LH1623-87	2	30Q
Lifting chain LH1623-89	2	30Q

40

mast)		
Name	数量/QTY	备注/Remark
Lifting chain LH1623-91	2	30Q
Lifting chain LH1623-99	2	30Q
Lifting chain LH1623-105	2	30Q
Lifting chain LH1623-109	2	30Q
Lifting chain LH1623-121	2	30Q
Lifting chain LH1623-131	2	30Q
Lifting chain LH1623-141	2	30Q
Lifting chain LH1634-59	2	35Q
Lifting chain LH1634-69	2	35Q
Lifting chain LH1634-79	2	35Q
Lifting chain LH1634-85	2	35Q

Lifting chain LH1634-89	2	35Q
Lifting chain LH1634-91	2	35Q
Lifting chain LH1634-93	2	35Q
Lifting chain LH1634-101	2	35Q
Lifting chain LH1634-107	2	35Q
Lifting chain LH1634-111	2	35Q
Lifting chain LH1634-121	2	35Q
Lifting chain LH1634-133	2	35Q
Lifting chain LH1634-143	2	35Q

(stand mast)		
Name	数量/QTY	备注/Remark
Hoop	1	
Strip 4x250	1	
Press plate	1	
Oil return hose1L=620	2	
Oil return hose1L=870	2	
Oil return hose1L=1120	2	
Oil return hose1L=1270	2	
Oil return hose1L=1370	2	
Oil return hose1L=1420	2	
Oil return hose1L=1470	2	
Oil return hose1L=1620	2	
Oil return hose1L=1770	2	

Oil return hose1L=1920	2	
Oil return hose1L=2120	2	
Oil return hose1L=2370	2	
Oil return hose1L=2620	2	
Joint	1	
Hydraulic hose assembly 13-L360-2SC-60°	1	
Speed limit valve XSF-F16L-60	1	
Oring 17x2.65	1	
Joint	1	
Hydraulic hose assembly 13-L740-2SC-60°	1	
Strip P-N156-00646	2	
Oil return hose2	1	
Oring 17x2.65	3	
Joint 12-M20x1.5-M22x1.5-60°	2	

42

stand mast)		
Name	数量/QTY	备注/Remark
Bolt GB5782-M12x90-8.8	1	
WasherGB93-12	1	
Washer GB97.1-12-200HV	1	
Bush Φ22xΦ13x56	1	
Pulley Φ110x27	2	
ScrewGB70.1-M8x30-8.8	2	
Washer GB93-8	6	
Rubber pipe lump	2	
Pipe press fixedly plank	2	
Hydraulic hose assembly (90°)8-L4050-1SC-60°	2	H=3000
Hydraulic hose assembly(90°)8-L2950-1SC-60°	2	H=2000
Hydraulic hose assembly(90°)8-L3450-1SC-60°	2	H=2500
Hydraulic hose assembly(90°)8-L4250-1SC-60°	2	H=3300

Hydraulic hose assembly(90°)8-L4400-1SC-60°	2	H=3500
Hydraulic hose assembly(90°)8-L4500-1SC-60°	2	H=3600
Hydraulic hose assembly(90°)8-L4650-1SC-60°	2	H=3700
Hydraulic hose assembly(90°)8-L5050-1SC-60°	2	H=4000
Hydraulic hose assembly(90°)8-L5350-1SC-60°	2	H=4300
Hydraulic hose assembly(90°)8-L5550-1SC-60°	2	H=4500
Hydraulic hose assembly(90°)8-L6150-1SC-60°	2	H=5000
Hydraulic hose assembly(90°)8-L6650-1SC-60°	2	H=5500
Hydraulic hose assembly(90°)8-L7150-1SC-60°	2	H=6000
Joint 8-2XM16x1.5-60°	2	
fixedly plank	1	
Washer GB97.1-8-200HV	2	
Oring 9.5x1.8	4	
Hydraulic hose assembly (90°)8-L500-1SC-90°	2	
Sideshifters(LH)	1	
Sideshifters(LD)	1	
Sideshifters(CASCADE)	1	