



# PTE18L



## Economic Long-tiller Electric Pallet Truck

### INTRODUCTION

The PTE18L Electric Pallet Truck is the ideal choice for material transportation in short - distance or trailer loading/unloading. It is developed based on PT20L targeting to markets such as North American market. It is equipped with AC drive unit, Curtis Controller and maintenance-free battery and built-in charger , competitive in cost with attractive price comparing to counterparts in the industry.

**WITH HIGH PRICE/  
PERFORMANCE RATIO**

- Continuous work of 7 hours
- Adapt to any conditions

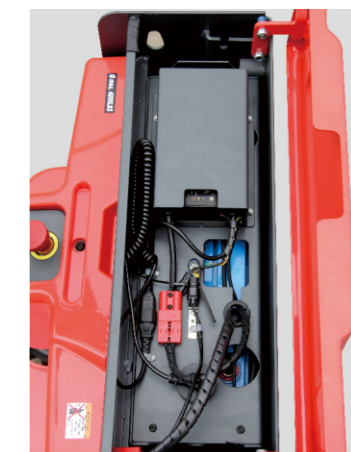
### ADVANTAGE:

- Ergonomic, Compact and Safe Long Tiller Design
- High Performance Maintenance-free AC Drive Unit
- Bigger Ground Clearance for Tough-ground Applications
- Competitive Cost with Excellent Performance



#### Special design

Special design for fork tip with 3 entry rollers and 4 exit rollers for easy entry and exit of the pallet, esp. when the pallet is empty or light loaded.



#### Built-in Charger

The built-in charger is located above the battery, easy charging after opening the battery cover.



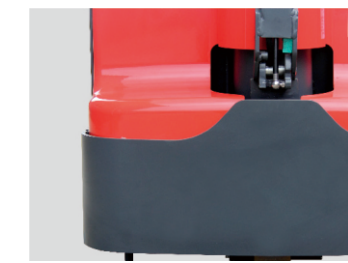
#### Creep Button

Creep/Slow speed button for safe and easy operation esp. in confined spaces such as steering in the trailer.



#### Bigger ground clearance

Bigger ground clearance, for easy operation for uneven grounds with potholes or small obstacles such as small thresholds or on trailers with lifting gates.



#### Robust and Reliable Design

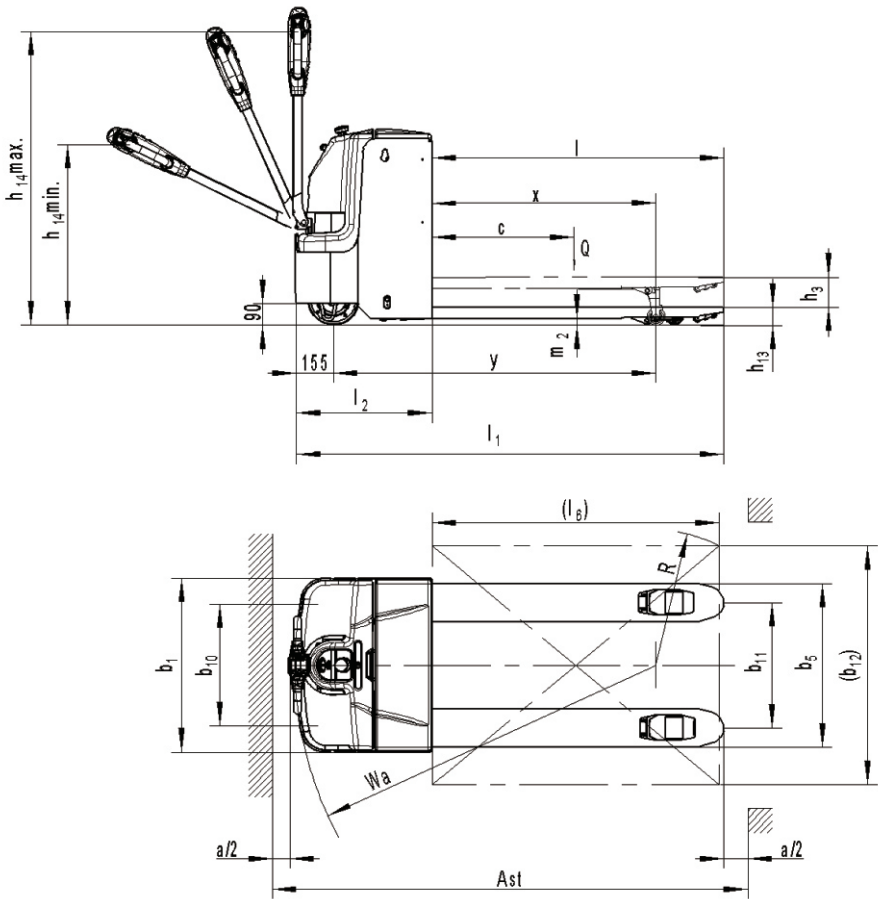
The robust chassis with the strong 8mm thick apron protects the truck and the components against mechanical impacts from the outside. The steel battery cover ensures the battery well protected. IP54 protection for the controller for safe operation for delivery applications where the dust and water droplets is common.





Big capacity Maintenance-free Battery

Equipped with 160Ah maintenance-free battery, with working time 12hours according to the VDI calculation, or for continuous work of 7 hours. There are many advantages comparing to Lead-acid battery:  
No acid refilling maintenance  
Less cable corrosion with the connection pile head  
More protection on over-charging  
Bigger initiating current  
Longer electricity storage time  
More environment-friendly



Type sheet for industrial truck acc. to VDI 2198 1KG=2.2LB 1INCH=25.4MM				
Distinguishing mark	1.2	Manufacturer's type designation		PTE18L
	1.3	Power(battery,diesel,petrol gas>manual)		Battery
	1.4	Operator type		pedestrian
	1.5	Load Capacity / rated load	Q (t)	1.8
	1.6	Load centre distance	C (mm)	600
	1.8	Load distance, centre of drive axle to fork	X (mm)	948 <sup>1)</sup>
	1.9	Wheelbase	y (mm)	1360 <sup>1)</sup>
Weight	2.1	Service weight	kg	415
	2.2	Axle loading, laden front/rear	kg	785/1430
	2.3	Axle loading, unladen front/ rear	kg	335/80
Tires, chassis	3.1	Tires		Polyurethane (PU)
	3.2	Tire size, front	ø x w (mm)	210X70
	3.3	Tire size, rear	ø x w (mm)	74X100
	3.4	Additional wheels (dimensions)	ø x w (mm)	/
	3.5	Wheels, number front/ rear(x=driven wheels)		1×+2
	3.6	Tread, front	b10 (mm)	510
	3.7	Tread, rear	b11 (mm)	525
Dimensions	4.4	Lift height	h3 (mm)	120
	4.9	Height of tiller in drive position min. / max.	b14 (mm)	770/1230
	4.15	Height, lowered	b13 (mm)	75
	4.19	Overall length	l1 (mm)	1790
	4.20	Length to face of forks	l2 (mm)	570
	4.21	Overall width	b1 (mm)	729
	4.22	Fork dimensions	s/e/l (mm)	50/160/1220(1150)
	4.25	Distance between fork-arms	b5 (mm)	685
	4.32	Ground clearance, centre of wheelbase	m2 (mm)	25
	4.34	Aisle width for pallets 1000X1200 lengthways	Ast (mm)	2270
	4.35	Turning radius	Wa (mm)	1525 <sup>1)</sup>
Performance data	5.1	Travel speed, laden/ unladen	km/h	5.0/5.2
	5.2	Lift speed, laden/ unladen	m/s	0.025/0.030
	5.3	Lowering speed, laden / unladen	m/s	0.030/0.025
	5.8	Gradeability, laden/ unladen	%	8/12
	5.10	Service brake		Electromagnetic
Electric- engine	6.1	Drive motor rating S2 60min	kW	0.75
	6.2	Lift motor rating at S3 10%	kW	0.8
	6.3	Battery acc. to DIN 43531 /35 / 36 A, B, C, no		/
	6.4	Battery voltage, nominal capacity K5	V/Ah	24/160
	6.5	Battery weight (minimum)	kg	145
Addition data	8.1	Type of drive control		AC -Speed Control
	8.4	Sound level at driver's ear acc. to EN 12053	dB(A)	69

1) Load section lowered:+62mm